

WHERE POWERFUL
MEETS PORTABLE.

TRAVELQ™ SERIES



STEAKHOUSE RESULTS ANYWHERE YOU GO.

- ✓ You view perfect grill marks as a badge of honor.
- ✓ You think cutting into a steak to check doneness is sacrilege.
- ✓ You know when and why to use rub vs. marinade vs. sauce.

That's why you are ready for a Napoleon grill. Napoleon takes the art of grilling to a higher level. Every feature, every material is engineered to give ultimate performance, so you can create unforgettable meals and memorable moments. And just like you, we're not some rookie behind the grill. Napoleon is a family-owned company with over 20 passionate years of grill-making experience. Every great meal starts with the best ingredients. Start yours with the best grill out there: Napoleon.

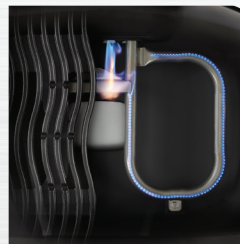




 **TRAVEL Q**[™]
PORTABLE GAS GRILL



High-Top Lid for
Larger Cuts of Meat



Advanced
Cooking System



Large Grilling Area

TRAVELQ™ SERIES

TQ285X-RD and TQ285-RD



TQ285X-RD

- » High-top cast aluminum lid for cooking larger cuts of meat
- » **ACCU-PROBE**™ temperature gauge
- » Dual stainless steel burners and hardware components
- » Superior wind proof design holds the heat in
- » Sets up in 10 seconds
- » Innovative scissor cart design with large wheels for easy mobility and folds upright for convenient storage or can hang on a wall (TQ285X)
- » Safely locks in an upright position for ultimate stability (TQ285X)
- » Locking lid with fold away legs (TQ285)
- » Ultra compact design, easy to setup and use





TRAVELQ™ 285X

TQ285X-RD-1-A

12,000 BTU's
Dual Stainless Steel Burners
Cooking Area: 285 in² (1840 cm²)

Assembled size: 44 1/4" w x 20 1/4" d x 38 3/4" h (112 cm w x 51 cm d x 98 cm h)
Folded size: 42 3/4" w x 20 1/4" d x 14 1/2" h (108 cm w x 51 cm d x 36 cm h)



ULTIMATE PORTABILITY

Folds and safely locks
in an upright position
for ultimate stability



TRAVELQ™ 285

TQ285-RD-1-A

12,000 BTU's
Dual Stainless Steel Burners
Cooking Area: 285 in² (1840 cm²)

Assembled size: 24" w x 19 1/4" d x 15 1/2" h (61 cm w x 49 cm d x 39 cm h)
Folded size: 24" w x 19 1/4" d x 12 1/4" h (61 cm w x 49 cm d x 31 cm h)



Porcelainized Cast Iron **Iconic WAVE** Cooking Grids



Ergonomic Control Knobs



Instant **JETFIRE** Ignition



Dual **Stainless Steel Burners** for Direct or Indirect Grilling



ACCU-PROBE Temperature Gauge



Spacious Side Shelves with Integrated Towel and Utensil Holders
TQ285X

TRAVELQ™ PRO SERIES

PRO285X and PRO285

- » Long lasting WeatherGuard™ high-top cast aluminum lid for cooking larger cuts of meat
- » ACCU-PROBE™ temperature gauge
- » Dual stainless steel burners and hardware
- » Superior wind proof design holds the heat in
- » Robust ergonomic control knobs for a smooth grip
- » Sets up in 10 seconds
- » Innovative scissor cart design with large wheels for easy mobility and folds upright for convenient storage or can hang on a wall (PRO285X)
- » Safely locks in an upright position for ultimate stability (PRO285X)
- » Ultra compact design, easy to setup and use
- » Stainless steel condiment tray with integrated bottle opener (Optional PRO285-STAND)
- » Side clips for storing side shelves when not in use (Optional PRO285-STAND)
- » Large, weather proof two-piece wheels with sturdy steel legs with silver powder coat (Optional PRO285-STAND)



PRO285

PRO285-STAND

Assembled size with PRO285 Grill: 48 ½" w x 20 ¾" d x 42 ½" h
(123 cm w x 53 cm d x 108 cm h)

Assembled size for cart kit with side shelves only: 30 ½" w x 20 ½" d x 29" h
(77.5 cm w x 52 cm d x 74 cm h)



TRAVELQ™ PRO 285X

PRO285X-BK

12,000 BTU's
Dual Stainless Steel Burners
Cooking Area: 285 in² (1840 cm²)

Assembled size: 45" w x 20" d x 39 ¾" h (112 cm w x 51 cm d x 101 cm h)
Folded size: 45" w x 20" d x 18 ½" h (112 cm w x 51 cm d x 47 cm h)

ULTIMATE PORTABILITY
Folds and safely locks
in an upright position
for ultimate stability



TRAVELQ™ PRO 285

AVAILABLE IN PROPANE (PRO285-BK) AND NATURAL GAS (PRO285N-BK)

12,000 BTU's
Dual Stainless Steel Burners
Cooking Area: 285 in² (1840 cm²)

Assembled size: 29" w x 18 ½" d x 14 ¾" h
(74 cm w x 47 cm d x 38 cm h)



PRO 285 TRAVEL Q STAND

PRO285-STAND

Fits PRO285 and PRO285E

Stylish front hides propane tank and includes built-in hangers for storing cooking grids or griddle when not in use. Stainless steel condiment tray with integrated bottle opener. Side clips for storing side shelves when not in use. Large, weather proof two-piece wheels with sturdy steel legs with silver powder coat

Assembled size with PRO285 Grill: 48 ½" w x 20 ¾" d x 42½" h
(123 cm w x 53 cm d x 108 cm h)

Assembled size for cart kit with side shelves only: 30 ½" w x 20 ½" d x 29" h
(77.5 cm w x 52 cm d x 74 cm h)



ACCU-PROBE™
Temperature Gauge



Ergonomic Control Knobs



Dual Stainless Steel Burners for Direct or Indirect Grilling



Instant **JETFIRE™** Ignition



Warming Rack 71286
(Fits PRO285 and TQ285-1 models but does not fit original TQ285 non -1 models)



Optional Porcelain-enameled **Cast Iron Reversible Griddle**

56080

TRAVELQ™ PRO 285E

PRO285E-BK

1500 watt Burner Element
Cooking Area: 285 in² (1840 cm²)

Assembled size: 29" w x 18 ½" d x 14 ¾" h (74 cm w x 47 cm d x 38 cm h)



OPTIONAL CART
PRO285 - STAND

- » High-top cast aluminum lid for maximum heat retention
- » **ACCU-PROBE™** temperature gauge
- » 1500 watt burner element
- » Adjustable, easy to set heat control
- » Thermostat and burner element are easily removed for quick and efficient cleaning of porcelain drip pan
- » Porcelainized cast iron **Iconic WAVE™** cooking grids
- » **Side handles** for easy carrying
- » Superior wind proof design holds the heat in
- » Ultra compact design, easy to setup and use
- » Solid cast aluminum base and stainless steel hardware
- » Optional cart and side shelves with integrated condiment and utensil holders
- » Extra large 13.5" l x 20.5" w (34 cm l x 52 cm w) cooking area



Adjustable **Easy to Set** Heat Control



1500 watt Element



High-Top **Cast Aluminum Lid**



Side Handles for **Easy Carrying**



ACCU-PROBE™ Temperature Gauge



Optional Porcelain-enameled **Cast Iron Reversible Griddle**

56080



TRAVELQ™ PRO VERSATILE GOURMET GRILLING



TRAVELQ™ 240

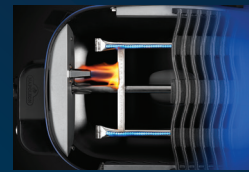
TQ240-BL

9,000 BTU's
1 Main Burner
Cooking Area: 240 in² (1548 cm²)

Assembled size: 26" w x 18 ½" d x 14" h (66 cm w x 47 cm d x 35.5 cm h)



- » Ergonomic control dial
- » Instant **JETFIRE™** ignition
- » **Ergonomic Handle** for easy carrying
- » **Stainless Steel** rectangular burner
- » Porcelainized cast iron **Iconic WAVE™** cooking grids
- » **Folding legs** for convenient storage and portability
- » Easy access to fire box cleaning
- » Easy access removable drip tray



Stainless Steel
Rectangular Burner



Porcelainized Cast Iron
Iconic WAVE™ Cooking
Grids



Ergonomic Control Dial



Instant **JETFIRE™**
Ignition

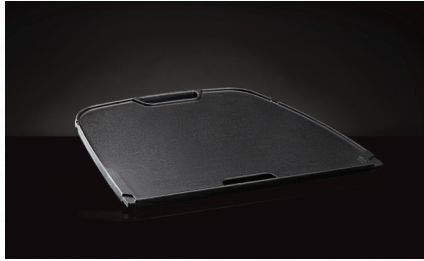


Ergonomic Handle for
Easy Carrying

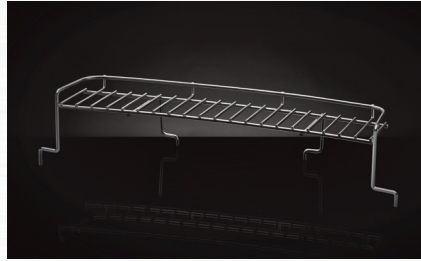


Folding Legs for
Convenient Storage and
Portability

UPGRADE YOUR GRILLING ACCESSORIES



CAST IRON REVERSIBLE GRIDDLE
56080 (Fits all Travel Q 285 series grills)



WARMING RACK
71286 (Fits TravelQ™ PRO285/TQ285-1)



FAST READ THERMOMETER
70048



SILICONE BASTING BRUSH
55005



NATURAL FIBER GRILL BRUSH
62053



THREE SIDED BRASS GRILL BRUSH
62012



CEDAR GRILL SCRAPER
62051



TRAVELQ™ 3 PIECE TOOLSET
70051



TQ285 CARRY BAG
61285



TQ285 & PRO285 GRILL COVER
61286



TRAVEL Q PRO285 ON STAND COVER
61287



PRO285X & TQ285X GRILL COVER
61288

ULTRA COMPACT HIGH-TOP

Features a high-top, cast aluminum lid for cooking roasts and other large cuts of meat so you can prepare and enjoy a full size gourmet meal in the most remote locations.



NAPOLEON

CELEBRATING OVER 40 YEARS OF HOME COMFORT PRODUCTS



napoleon.com

24 Napoleon Road, Barrie, Ontario, Canada L4M 0G8
103 Miller Drive, Crittenden, Kentucky, USA 41030
7200 Trans Canada Highway, Montreal, Quebec, Canada H4T 1A3

PHONE: 1-888-721-8324
grills@napoleon.com

Approved by Intertek Testing Services to standards in the USA and Canada: ANSI Z21.58 / CSA 1.6 - Outdoor Cooking Gas Appliances. All specifications and designs are subject to change without prior notice due to ongoing product improvements. Consult your owner's manual for complete installation and operating instructions and check all local and national Building Codes and Regulations. Not all features available on all models. Images and colors may not be exactly as shown. Napoleon is a trademark of Wolf Steel Group Inc. and is used under license.

Authorized Dealer



Printed in Canada
ADBRN2-TRVQ-CA (ADBRTQ-CA) - 03/2024