



RZ41 FIREPLACE

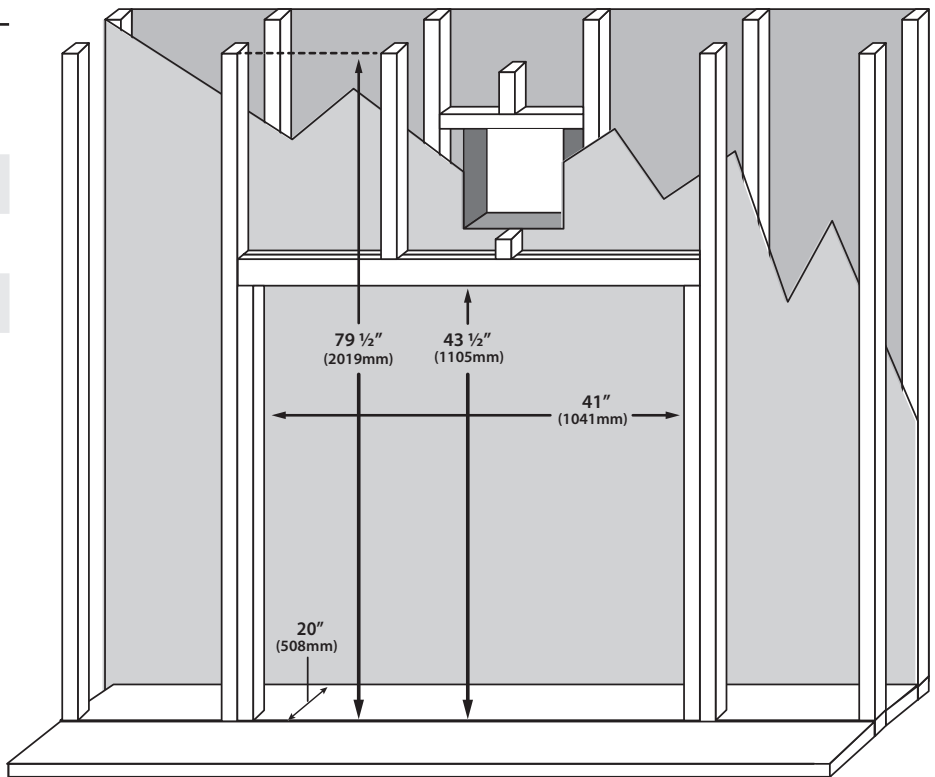
Installation Reference Guide

REFER TO OWNER'S MANUAL FOR SPECIFIC INSTALLATION REQUIREMENTS AND ADDITIONAL PRODUCT INSTRUCTIONS

Minimum Framing Dimensions

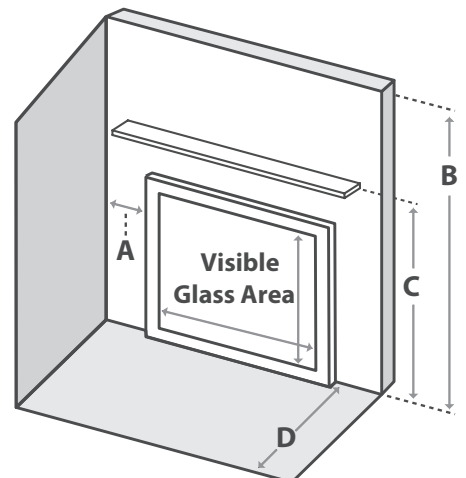
Depth	20"	508 mm
Width	41"	1041 mm
Header Height	43 1/2"	1105 mm
Enclosure Ceiling	79 1/2"	2019mm

Note: Vent size = Co-axial 5 x 8"

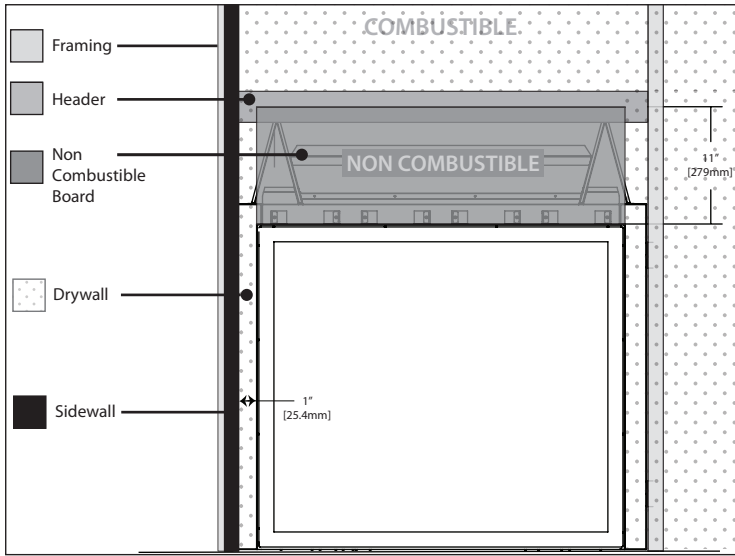


Clearance to Combustibles

A - Finishing edge to side wall	1"	25.4mm
B - Minimum clearance to enclosure ceiling	79 1/2"	2019 mm
C - Minimum clearance to mantel height	See Chart	See Chart
D - Front of door to edge of floor protection	0"	0 mm
D - Minimum clearance to LVP / LVT Flooring	24"	610 mm
Visible Glass Area (H x W)	25 5/8" x 31 3/4"	651 x 806 mm

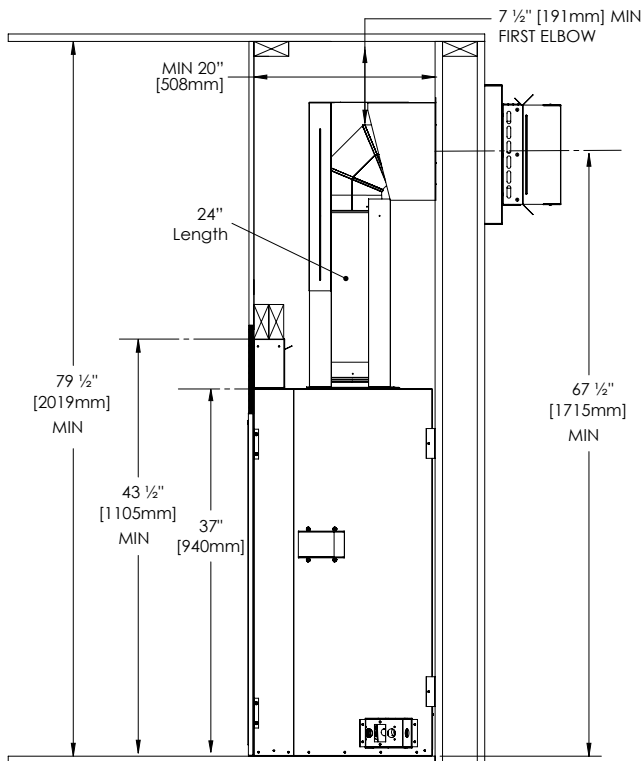


Non-Combustible Board Placement

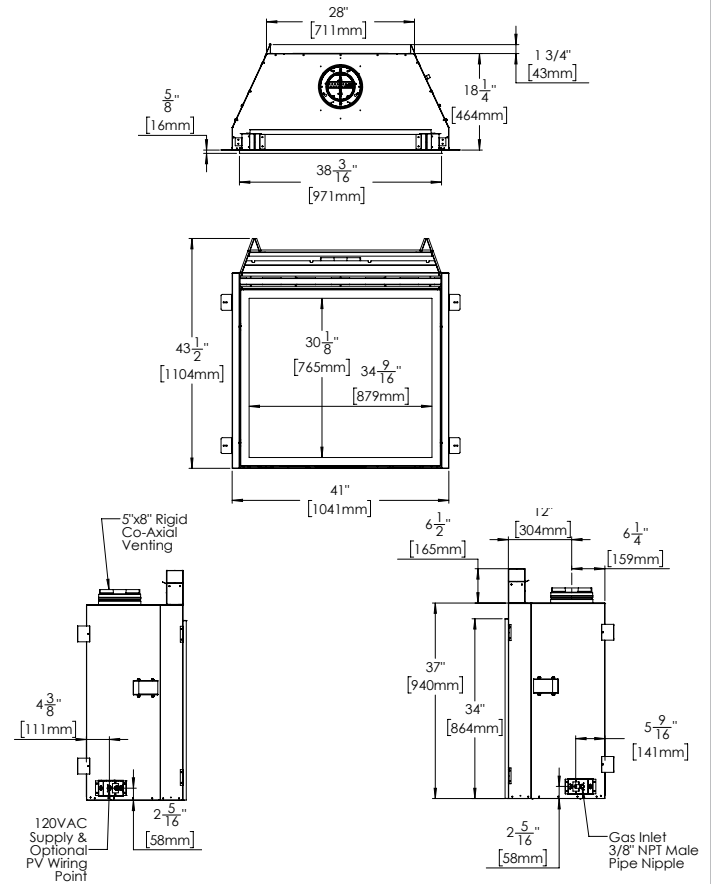


Minimum Venting Requirements

Minimum permitted venting is shown below. The framing height to the center of the thimble is 67½". Minimum venting must include a 24" vertical section and a 90 degree elbow which is then terminated horizontally. For a vertical termination please follow the vent pipe manufacturer's installation instructions for vertical vent termination framing. A minimum of 1 in. (25 mm) clearance on all sides of the vertical vent pipe must be maintained. For every 12" of horizontal run there must be a 1/4" of rise. 1" of clearance between framing and venting must be maintained at all times. 2" above the venting and 3" above an elbow.

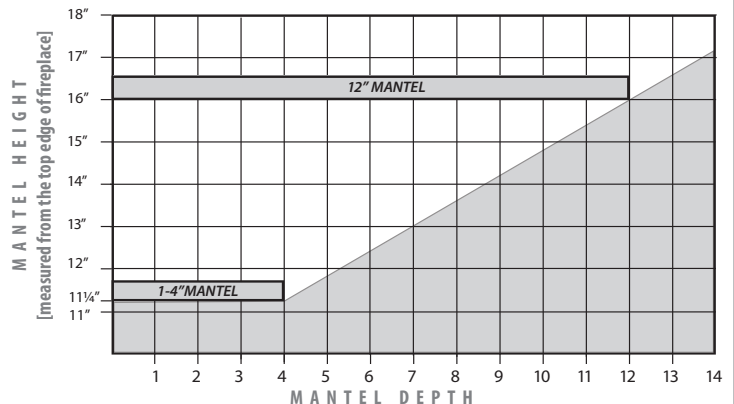


Fireplace Dimensions



Mantel Projections

Mantel graph dimensions are measured from the top tiling edge of the fireplace, if you wish to reference the mantel height from the floor add 34" (864mm) to the mantel height depicted on the graph. If you plan to install a TV above your fireplace refer to the appropriate section of the owner's manual for available options. **If you are activating the Cool Surface System you are eligible to install a 4" (102mm) mantel directly above the top tiling edge.**



OPTIONAL STEP Cool Surface System

Option 1: Front Discharge (flush wall installations) - Construct the framing in a way that provides a minimum 41inch (1054mm) by 3½ inch (89mm) gap at the top of the facing wall. It is essential that these dimensions are respected and not deviated away from them when using combustible materials inside or outside the chase (see Figure 1).

Option 2: Front Bezel - The included bezel may be desired to accentuate the front discharge (figure 3). This installation will also cover the edge of the finishing material at the cutout. The top of the cutout cannot be more than 1 1/2" from the top of the chase (figure 2). It is essential that these dimensions are followed and not to deviated from them when using combustible materials inside the chase.

Note: If you wish to construct the CSS air discharge part way up a tall wall then it is essential to build a false ceiling inside the chase at the desired height to direct the rising heat out of the gap.

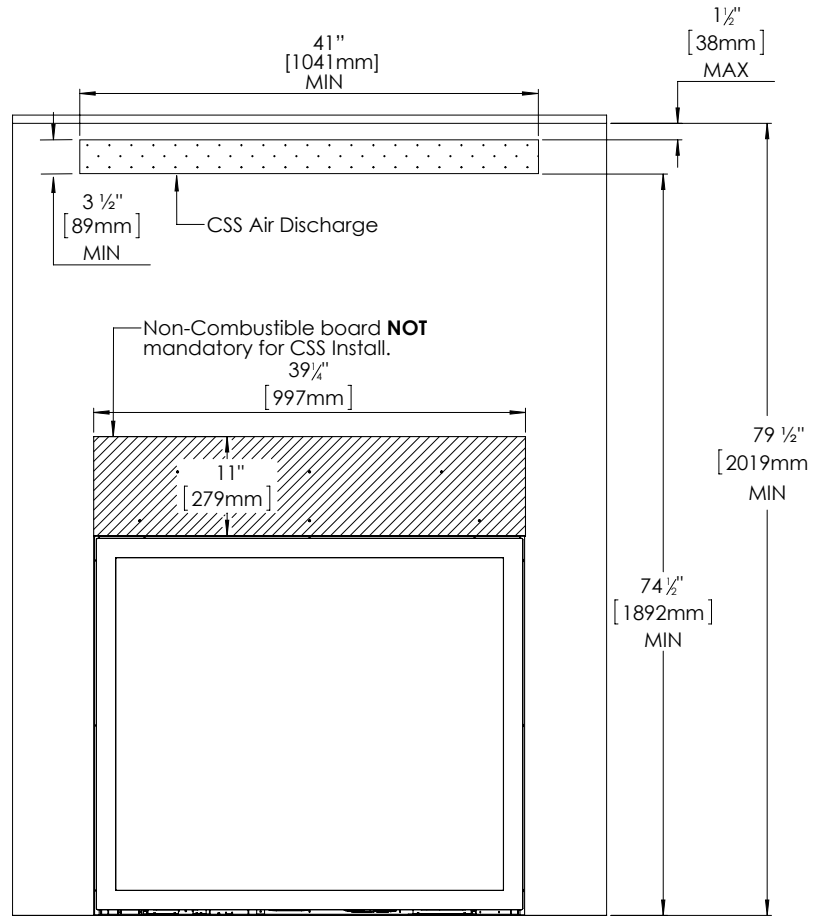


Figure 1: Options 1 Front Discharge

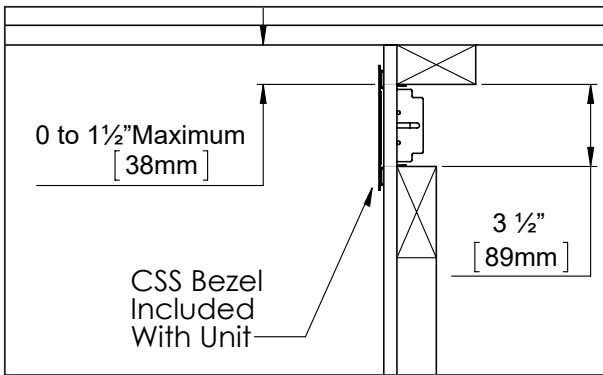


Figure 2: Option 2 Front Bezel

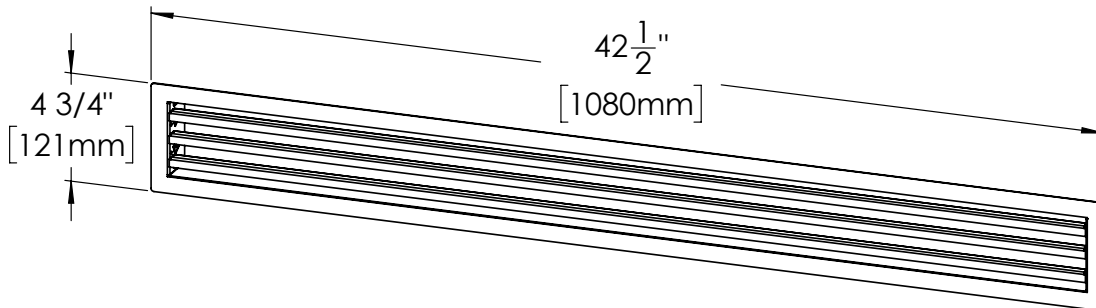


Figure 3: Front Bezel Iso View

OPTIONAL STEP Cool Surface System

Optional: False Ceiling - If your ceiling dimension is greater than the minimum (figure 1) you may want the CSS Air discharge lower on the wall. To do this a false ceiling is required to properly evacuate the heat from the chase (figure 4).

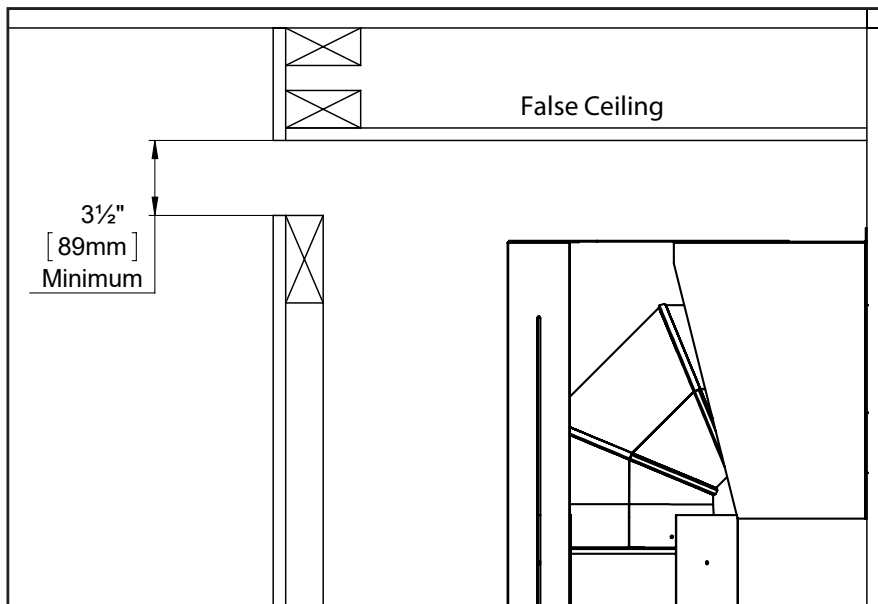


Figure 4: False Ceiling

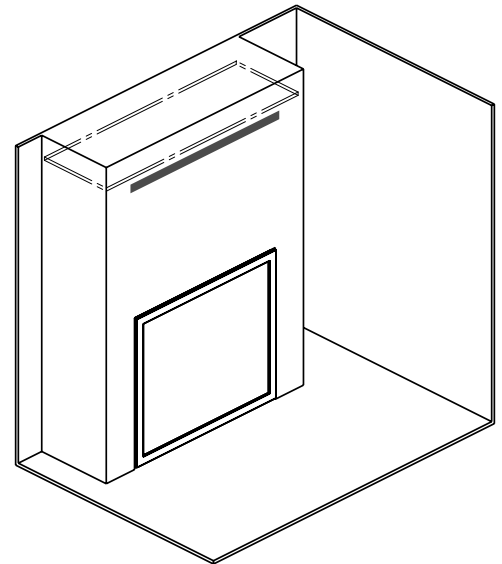


Figure 5: False Ceiling Iso View

Option 3: Side Discharge (built-out installations) - Construct the framing in a way that provides a minimum 17" (432mm) wide by 4 1/4" (64mm) tall opening **on each side of the chase**. The top of the opening must be no more than 1 1/2" (38mm) from the top of the chase (see Figure 6 & Figure 7). For installations deeper than minimum depth, the side discharge may be reduced to 20 5/8" (524mm) wide by 3 1/2" (89mm) tall. Aftermarket louvers/grills may also be used to accentuate the openings but their restriction must be accounted for. **Minimum free open area, per side, must be no less than 72 1/4 in² (466 cm²).**

- Side CSS openings must be at least 60" (152 cm) away from the nearest fire sprinkler head.
- A wall directly in front of any side CSS opening must be at least 16" (406mm) away

Note: If you wish to construct the CSS air discharge part way up a tall wall then it is essential to build a false ceiling inside the chase at the desired height to direct the rising heat out of the gap. See above.

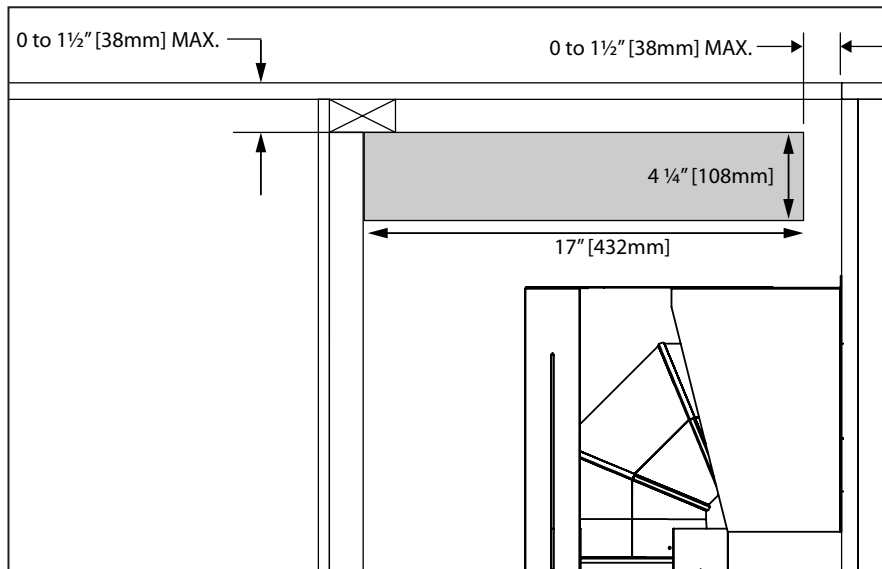


Figure 6: Side Discharge

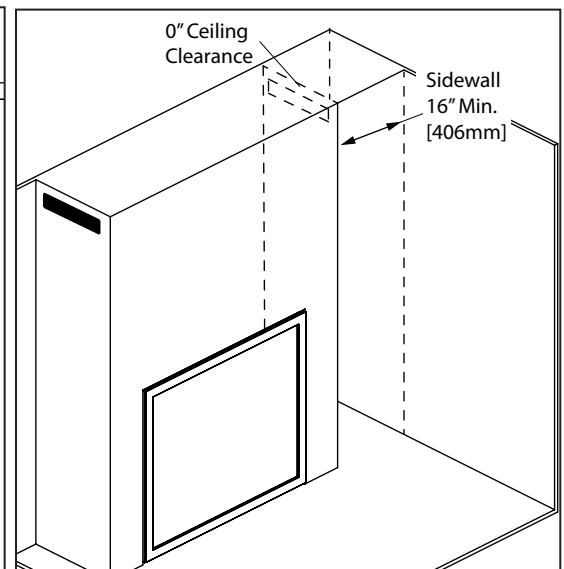


Figure 7: Side Discharge Iso View

OPTIONAL STEP Cool Surface System

Option 4: Open Chase / Shadow Line (for built-out installations) - This could be considered the most discreet option when considering the CSS. The chase must be constructed in a way that stops short of the ceiling, leaving it totally vented above. Minimum framing dimensions must be followed when constructing this option and not to deviated from them when using combustible materials.

Note - Chase cannot be open to joists or rafters above.

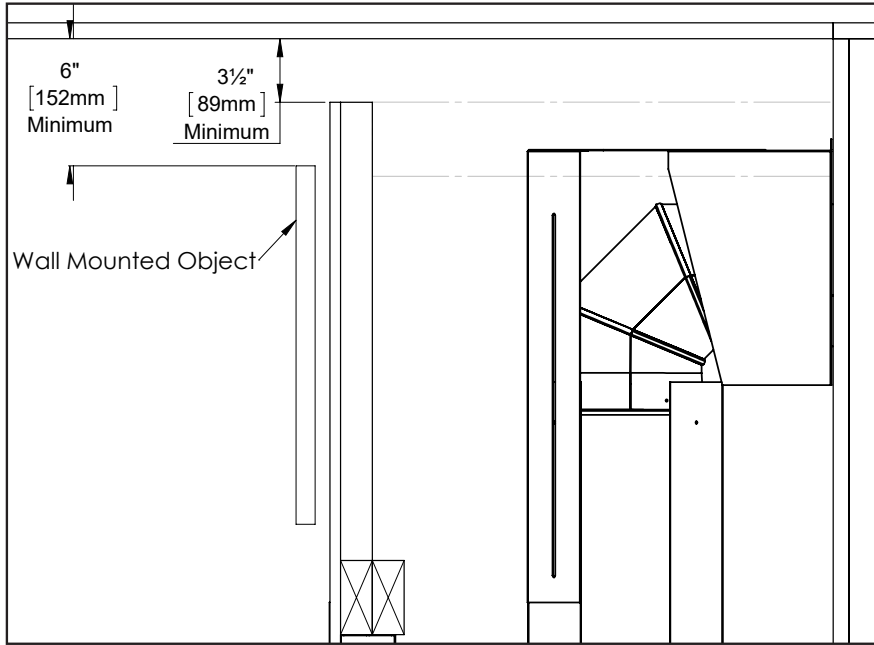


Figure 8: Open Chase / Shadow Line

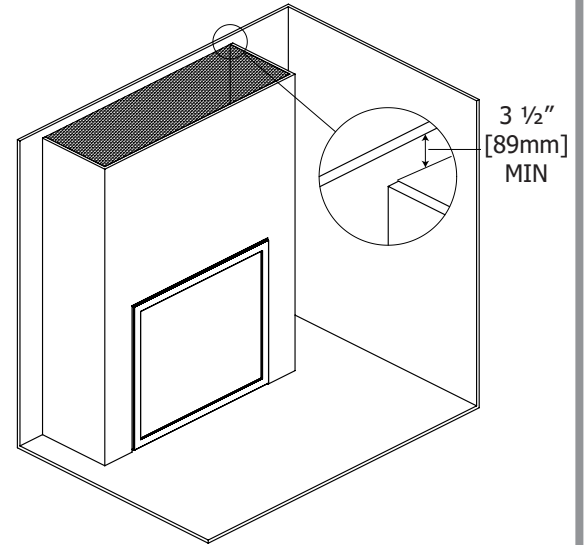


Figure 9: Open Chase Iso View