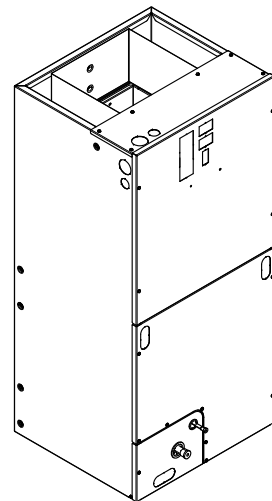




Product Data

Convertible Air Handlers 1-1/2 – 5 Ton

TEM8A0B24V21DC
TEM8A0B30V31DC
TEM8A0C36V31DC
TEM8A0C42V41DC
TEM8A0C48V41DC
TEM8B0C60V51DA



The TEM8 series air handler is designed for installation in a closet, utility room, alcove, basement, crawlspace or attic. These versatile units are applicable to air conditioning and heat pump applications. Several models are available to meet the specific requirements of the outdoor equipment. Field installed electric resistance heaters are available.



Features and Benefits

- Communicating or 24 V control
- Painted metal cabinet with captured foil face insulation
- 2% or less air leakage
- R-4.2 Insulating Value
- Multi-Position UP/Down Flow, Horizontal Left /Right
- ALL Aluminum Coil
- Electric Heaters with polarized plug connections (sold as accessory)
- R-410A Thermal Expansion Valve
- Variable Speed ECM Motor
- Low Voltage Pigtail Connections
- Draw Through Design
- Horizontal Drain Pan
- Single Color
- Fused 24V Power
- **3 year warranty**
- **10-year warranty registered**
- **Optional extended warranty available**

Optional Equipment

Accessory Number	Description	Fits Model
TEMBRKSEALKT	Breaker Seal Kit	TEM8A0B24-TEM8A0D60
BAYHTR1504BRK	Electric Heater, 4KW, Breaker, 24V Control, 1 Ph	TEM8A0B24-TEM8A0D60
BAYHTR1504LUG	Electric Heater, 4KW, Lug, 24V Control, 1 Ph	TEM8A0B24-TEM8A0D60
BAYHTR1505BRK	Electric Heater, 5KW, Breaker, 24V Control, 1 Ph	TEM8A0B24-TEM8A0D60
BAYHTR1505LUG	Electric Heater, 5KW, Lug, 24V Control, 1 Ph	TEM8A0B24-TEM8A0D60
BAYHTR1508BRK	Electric Heater, 8KW, Breaker, 24V Control, 1 Ph	TEM8A0B24-TEM8A0D60
BAYHTR1508LUG	Electric Heater, 8KW, Lug, 24V Control, 1 Ph	TEM8A0B24-TEM8A0D60
BAYHTR1510BRK	Electric Heater, 10KW, Breaker, 24V Control, 1 Ph	TEM8A0B24-TEM8A0D60
BAYHTR1510LUG	Electric Heater, 10KW, Lug, 24V Control, 1 Ph	TEM8A0B24-TEM8A0D60
BAYHTR1516BRK	Electric Heater, 15KW, Breaker, 24V Control, 1 Ph	TEM8A0B24-TEM8A0D60
BAYHTR3510LUG	Electric Heater, 10KW, Lug, 24V Control, 3 Ph	TEM8A0B24-TEM8A0D60
BAYHTR3515LUG	Electric Heater, 15KW, Lug, 24V Control, 3Ph	TEM8A0B24-TEM8A0D60
BAYHTR1517BRK	Electric Heater, 15KW, Breaker, 24V Control, 1 Ph	TEM8A0B24-TEM8A0D60
BAYHTR3517BRK	Electric Heater, 15KW, Lug, 24V Control, 3 Ph	TEM8A0B24-TEM8A0D60
BAYHTR1522BRK	Electric Heater, 20KW, Breaker, 24V Control, 1 Ph	TEM8A0B36-TEM8A0D60
BAYHTR1523BRK	Electric Heater, 20KW, Breaker, 24V Control, 1 Ph	TEM8A0B36-TEM8A0D60
BAYHTR1525BRK	Electric Heater, 25KW, Breaker, 24V Control, 1 Ph	TEM8A0B48-TEM8A0D60
BAYTEMSPFG1A/B	Supply Duct Flange Kit	TEM8A0B24-TEM8A0D60
BAYSPEKT201A	Single Point Power Entry Kit	TEM8A0B24-TEM8A0D60
TAYBASETEMA	Downflow Sub-Base, Adjustable	TEM8A0B24-TEM8A0D60
TAYBASE185	Air Handler Downflow Sub-Bases	TEM8A0B24-TEM8A0B30
TAYBASE235 (TAYBASE 100)	Air Handler Downflow Sub-Bases	TEM8A0C36-TEM8A0C42
TAYBASE260	Air Handler Downflow Sub-Bases	TEM8A0D48-TEM8A0D60
BAY6TXV2442A	R-22 TXV Conversion Kit	TEM8A0B24-TEM8A0C42
BAY6TXV4860A	R-22 TXV Conversion Kit	TEM8A0D48-TEM8A0D60
BAYATXV6161C	R-22 TXV Conversion Kit	TEM8A0C48-TEM8A0C60
BAYSF1185AAA	Slim Fit Filter Box	18.5"
BAYSF1235AAA	Slim Fit Filter Box	23.5"
BAYSF1265AAA	Slim Fit Filter Box	26.5"



Product Specifications

MODEL	TEM8A0B24V21DC	TEM8A0B30V31DC	TEM8A0C36V31DC
RATED VOLTS/PH/HZ	208-230/1/60	208-230/1/60	208-230/1/60
RATINGS^(a)	See O.D. Specifications	See O.D. Specifications	See O.D. Specifications
INDOOR COIL — Type	Plate Fin	Plate Fin	Plate Fin
Rows — F.P.I.	3 — 14	3 — 14	4 — 12
Face Area (sq. ft.)	4.13	4.13	5.5
Tube Size (in.)	3/8	3/8	3/8
Refrigerant Control	TXV	TXV	TXV
Drain Conn. Size (in.) ^(b)	3/4 NPT	3/4 NPT	3/4 NPT
DUCT CONNECTIONS	See Outline Drawing	See Outline Drawing	See Outline Drawing
INDOOR FAN — Type	Centrifugal	Centrifugal	Centrifugal
Diameter-Width (In.)	11 X 8	11 X 8	11 X 8
No. Used	1	1	1
Drive - No. Speeds	Direct - 16	Direct - 16	Direct - 16
CFM vs. in. w.g.	See Fan Performance Table	See Fan Performance Table	See Fan Performance Table
No. Motors — H.P.	1 - 1/3	1 - 1/2	1 - 1/2
Motor Speed R.P.M.	Variable	Variable	Variable
Volts/Ph/Hz	208-230/1/60	208-230/1/60	208-230/1/60
F.L. Amps	2.8	3.9	3.9
FILTER			
Filter Furnished? ^(c)	No	No	No
REFRIGERANT	R-410A	R-410A	R-410A
Ref. Line Connections	Brazed	Brazed	Brazed
Coupling or Conn. Size — in. Gas	3/4	3/4	7/8
Coupling or Conn. Size — in. Liq.	3/8	3/8	3/8
DIMENSIONS	H x W x D	H x W x D	H x W x D
Crated (In.)	48-1/4 x 22-1/2 x 25-1/2	48-1/4 x 22-1/2 x 25-1/2	52-3/4 x 27-1/2 x 25-1/2
Uncrated	46-3/4 x 18-1/2 x 21-1/8	46-3/4 x 18-1/2 x 21-1/8	51-3/8 x 23-1/2 x 21-1/8
WEIGHT			
Shipping (Lbs.) / Net (Lbs.)	126/117	126/117	155/144

^(a) These Air Handlers are A.H.R.I certified with various Split System Air Conditioners and Heat Pumps (AHRI STANDARD 210/240). Refer to the Split System Outdoor Unit Product Data Guides for performance data.

^(b) 3/4" Male Plastic Pipe (Ref: ASTM 1785-76)

^(c) Remote filter required.



Product Specifications

MODEL	TEM8A0C42V41DC	TEM8A0C48V41DC	TEM8B0C60V51DA
RATED VOLTS/PH/HZ	208-230/1/60	208-230/1/60	208-230/1/60
RATINGS^(a)	See O.D. Specifications	See O.D. Specifications	See O.D. Specifications
INDOOR COIL — Type	Plate Fin	Plate Fin	Plate Fin
Rows — F.P.I.	4 — 12	4 — 14	4 — 14
Face Area (sq. ft.)	5.5	6.88	6.88
Tube Size (in.)	3/8	3/8	3/8
Refrigerant Control	TXV	TXV	TXV
Drain Conn. Size (in.) ^(b)	3/4 NPT	3/4 NPT	3/4 NPT
DUCT CONNECTIONS	See Outline Drawing	See Outline Drawing	See Outline Drawing
INDOOR FAN — Type	Centrifugal	Centrifugal	Centrifugal
Diameter-Width (In.)	11 X 8	11 X 8	11 X 8
No. Used	1	1	1
Drive - No. Speeds	Direct - 16	Direct - 16	Direct - 16
CFM vs. in. w.g.	See Fan Performance Table	See Fan Performance Table	See Fan Performance Table
No. Motors — H.P.	1 - 1/2	1 - 3/4	1 - 3/4
Motor Speed R.P.M.	Variable	Variable	Variable
Volts/Ph/Hz	208-230/1/60	208-230/1/60	208-230/1/60
F.L. Amps	3.9	5.7	5.7
FILTER			
Filter Furnished? ^(c)	No	No	No
REFRIGERANT	R-410A	R-410A	R-410A
Ref. Line Connections	Brazed	Brazed	Brazed
Coupling or Conn. Size — in. Gas	7/8	7/8	7/8
Coupling or Conn. Size — in. Liq.	3/8	3/8	3/8
DIMENSIONS	H x W x D	H x W x D	H x W x D
Crated (In.)	52-3/4 x 27-1/2 x 25-1/2	57-11/16 x 27-1/2 x 25-1/2	57-11/16 x 27-1/2 x 25-1/2
Uncrated	51-3/8 x 23-1/2 x 21-1/8	57-3/8 x 23-1/2 x 21-1/8	57-3/8 x 23-1/2 x 21-1/8
WEIGHT			
Shipping (Lbs.) / Net (Lbs.)	155/144	185/174	185/174

^(a) These Air Handlers are A.H.R.I certified with various Split System Air Conditioners and Heat Pumps (AHRI STANDARD 210/240). Refer to the Split System Outdoor Unit Product Data Guides for performance data.

^(b) 3/4" Male Plastic Pipe (Ref: ASTM 1785-76)

^(c) Remote filter required.



Heater Pressure Drop Table

Airflow CFM	Number of Racks				Heater Racks	
	1	2	3	4	Heater Model	No. of Racks
	Air Pressure Drop — Inches W.G.					
1800	0.02	0.04	0.06	0.14	BAYHTR1504	1
1700	0.02	0.04	0.06	0.14	BAYHTR1505	1
1600	0.02	0.04	0.06	0.13	BAYHTR1508	2
1500	0.02	0.04	0.06	0.12	BAYHTR1510	2
1400	0.02	0.04	0.06	0.12	BAYHTR3510	3
1300	0.02	0.04	0.05	0.11	BAYHTR1517	3
1200	0.01	0.04	0.05	0.10	BAYHTR3517	3
1100	0.01	0.03	0.05	0.09	BAYHTR1523	4
1000	0.01	0.03	0.04	0.09	BAYHTR1525	4
900	0.01	0.03	0.04	0.08		
800	0.01	0.03				
700	0.01	0.02				
600	0.01	0.02				

Subcooling Adjustment

System Matched with:	Indoor Unit Model No.	Outdoor Model No.	Subcooling
15 SEER HP — 3 ton	TEM8A0C36V31 TEM8A0C42V41	4TWR5036G1000A 4A6H5036G1000A	14 Degrees
All other matches must be charged per the nameplate charging instructions			

Subcooling Adjustment for TEM8A0C48V41 & TEM8B0C60V51

Sub-Cooling Charge Specification For AHRI Rated Performance		
OD Equipment	Up Flow / Horizontal	Down Flow
AC UNIT	OD Name Plate	OD Name Plate
HP UNIT ≤ 3.5 Tons	OD Name Plate	OD Name Plate + 4 Degrees
HP UNIT = 4 and 5 Tons	OD Name Plate	OD Name Plate



Performance and Electrical Data

TEM8A0B24V21DC AIRFLOW PERFORMANCE												
OUTDOOR MULTIPLIER (TONS)	CONSTANT CFM MODE / Constant Torque						CONSTANT TORQUE MODE					
	COOLING AIRFLOW SETTING		EXTERNAL STATIC PRESSURE		HEATING AIRFLOW SETTING		AIRFLOW POWER		EXTERNAL STATIC PRESSURE		AIRFLOW POWER	
	CFM/ton	Watts	0.1	0.3	0.5	0.7	0.9	0.1	0.3	0.5	0.7	0.9
1.5 tons	290	CFM	430/538	430/415	430/264	430/NA	430/NA	290	CFM	419	403	384
		Watts	50/39	75/48	95/43	110/NA	145/NA		Watts	34	96	167
	350	CFM	520/620	520/514	520/398	520/NA	510/NA	350	CFM	512	514	485
		Watts	60/53	90/64	120/61	135/NA	175/NA		Watts	44	77	153
	400	CFM	590/688	590/593	590/493	590/NA	590/NA	400	CFM	589	595	573
		Watts	75/67	105/80	140/80	160/NA	205/NA		Watts	56	91	173
2 tons	450	CFM	670/758	670/671	660/581	660/NA	660/NA	450	CFM	667	675	660
		Watts	85/85	125/100	160/102	190/NA	235/NA		Watts	71	107	196
	290	CFM	570/670	570/573	570/469	570/NA	568/NA	290	CFM	575	573	549
		Watts	60/63	90/76	125/75	165/NA	215/NA		Watts	53	87	167
	350	CFM	690/781	690/696	690/609	690/518	680/NA	350	CFM	693	702	689
		Watts	85/91	120/107	160/110	210/98	259/NA		Watts	76	113	204
2.5 tons †	400	CFM	790/875	790/798	790/720	780/639	780/555	400	CFM	791	805	798
		Watts	110/122	150/140	195/145	250/137	301/115		Watts	103	184	301
	450	CFM	890/971	890/899	880/827	880/754	880/680	450	CFM	889	902	899
		Watts	145/161	185/181	235/189	295/184	347/184		Watts	138	181	284
	290	CFM	720/823	720/741	710/659	710/573	710/481	290	CFM	717	728	717
		Watts	90/104	140/120	170/124	220/115	260/91		Watts	82	120	269
2.5 tons †	350	CFM	870/963	860/892	873/819	860/746	850/671	350	CFM	865	879	869
		Watts	140/157	182/177	235/185	280/180	330/161		Watts	128	170	335
	390 †	CFM	958/1075	975/1000	946/878	871/711	802/617	390 †	CFM	958	979	822
		Watts	147/170	203/195	269/211	342/197	403/189		Watts	138	192	406
	400	CFM	980/1100	993/1019	958/889	875/714	801/616	400	CFM	980	998	821
		Watts	157/181	213/205	280/219	357/205	418/196		Watts	146	202	422
2.5 tons †	450	CFM	980/1100	993/1019	958/889	875/714	801/616	450	CFM	980	969	821
		Watts	157/181	213/205	280/219	357/205	418/196		Watts	146	268	422

- † Factory Setting
- Status LED will blink once per 100 CFM requested. In torque mode, actual airflow may be lower.
- To prevent water blow-off, the max airflow demand allowable is 1000 CFM. If an outdoor multiplier and cooling airflow setting should result in a demand higher than 1000, the AFC will default the demand back to 1000.
- Torque mode will reduce airflow when static is above approximately 0.3" water column.
- All heating modes default to Constant CFM.
- In communicating mode, default CFM/Ton is 400.
- Cooling airflow values are with wet coil, no filter

OUTDOOR MULTIPLIER (TONS)	TEM8A0B30V31DC AIRFLOW PERFORMANCE										CONSTANT CFM MODE / CONSTANT TORQUE MODE															
	EXTERNAL STATIC PRESSURE (Constant CFM / Constant Torque)					HEATING AIRFLOW SETTING					AIRFLOW POWER					EXTERNAL STATIC PRESSURE										
	0.1	0.3	0.5	0.7	0.9	290	350	400	450	290	350	400	450	CFM	Watts	CFM	Watts	CFM	Watts	CFM	Watts	0.1	0.3	0.5	0.7	0.9
1.5 tons	430/538	430/415	430/264	430/NA	430/NA	290	350	400	450	430/NA	430/NA	430/NA	430/NA	CFM	Watts	CFM	Watts	CFM	Watts	CFM	Watts	434	419	419	403	384
	50/39	75/48	95/43	110/NA	145/NA	290	350	400	450	145/NA	145/NA	145/NA	145/NA	CFM	Watts	CFM	Watts	CFM	Watts	CFM	Watts	34	64	96	130	167
	520/620	520/514	520/398	520/NA	510/NA	350	400	450	290	510/NA	510/NA	510/NA	510/NA	CFM	Watts	CFM	Watts	CFM	Watts	CFM	Watts	521	512	514	500	485
	60/53	90/64	120/61	135/NA	175/NA	350	400	450	290	175/NA	175/NA	175/NA	175/NA	CFM	Watts	CFM	Watts	CFM	Watts	CFM	Watts	44	77	112	153	196
	590/688	590/593	590/493	590/NA	590/NA	400	450	290	568/NA	590/NA	590/NA	590/NA	590/NA	CFM	Watts	CFM	Watts	CFM	Watts	CFM	Watts	595	589	595	584	573
	75/67	105/80	140/80	160/NA	205/NA	400	450	290	165/NA	205/NA	205/NA	205/NA	205/NA	CFM	Watts	CFM	Watts	CFM	Watts	CFM	Watts	56	91	127	173	222
2 tons	670/758	670/671	660/581	660/NA	660/NA	450	290	568/NA	660/NA	660/NA	660/NA	660/NA	CFM	Watts	CFM	Watts	CFM	Watts	CFM	Watts	668	667	675	668	660	
	85/85	125/100	160/102	190/NA	235/NA	450	290	190/NA	235/NA	235/NA	235/NA	235/NA	CFM	Watts	CFM	Watts	CFM	Watts	CFM	Watts	71	107	145	196	250	
	570/670	570/573	570/469	570/NA	568/NA	290	350	400	450	568/NA	568/NA	568/NA	568/NA	CFM	Watts	CFM	Watts	CFM	Watts	CFM	Watts	575	569	573	561	549
	60/63	90/76	125/75	165/NA	215/NA	290	350	400	450	215/NA	215/NA	215/NA	215/NA	CFM	Watts	CFM	Watts	CFM	Watts	CFM	Watts	53	87	123	167	215
	690/781	690/696	690/609	690/518	680/NA	350	400	450	680/NA	680/NA	680/NA	680/NA	680/NA	CFM	Watts	CFM	Watts	CFM	Watts	CFM	Watts	693	693	702	696	689
	85/91	120/107	160/110	210/98	259/NA	350	400	450	259/NA	259/NA	259/NA	259/NA	259/NA	CFM	Watts	CFM	Watts	CFM	Watts	CFM	Watts	76	113	152	204	259
2.5 tons	790/875	790/798	790/720	780/639	780/555	400	450	780/639	780/555	780/555	780/555	780/555	CFM	Watts	CFM	Watts	CFM	Watts	CFM	Watts	791	795	805	803	798	
	110/122	150/140	195/145	250/137	301/115	400	450	250/137	301/115	301/115	301/115	301/115	CFM	Watts	CFM	Watts	CFM	Watts	CFM	Watts	103	143	184	240	301	
	890/971	890/899	880/827	880/754	880/680	450	290	880/754	880/680	880/680	880/680	880/680	CFM	Watts	CFM	Watts	CFM	Watts	CFM	Watts	889	895	902	899	891	
	145/161	185/181	235/189	295/184	347/184	450	290	295/184	347/184	347/184	347/184	347/184	CFM	Watts	CFM	Watts	CFM	Watts	CFM	Watts	138	181	226	284	347	
	720/823	720/741	710/659	710/573	710/481	290	350	710/573	710/481	710/481	710/481	710/481	CFM	Watts	CFM	Watts	CFM	Watts	CFM	Watts	717	718	728	723	717	
	90/104	140/120	170/124	220/115	260/91	290	350	220/115	260/91	260/91	260/91	260/91	CFM	Watts	CFM	Watts	CFM	Watts	CFM	Watts	82	120	159	212	269	
2.5 tons	870/963	860/892	873/819	860/746	850/671	350	400	860/746	850/671	850/671	850/671	850/671	CFM	Watts	CFM	Watts	CFM	Watts	CFM	Watts	865	871	879	876	869	
	140/157	182/177	235/185	280/180	330/161	350	400	280/180	330/161	330/161	330/161	330/161	CFM	Watts	CFM	Watts	CFM	Watts	CFM	Watts	128	170	214	272	335	
	969/1087	985/1011	993/921	992/809	1000/770	390	450	992/809	1000/770	1000/770	1000/770	1000/770	CFM	Watts	CFM	Watts	CFM	Watts	CFM	Watts	969	989	1004	999	1026	
	143/166	198/191	262/205	329/189	399/187	400	450	329/189	399/187	399/187	399/187	399/187	CFM	Watts	CFM	Watts	CFM	Watts	CFM	Watts	134	188	250	323	402	
	993/1114	1008/1035	1017/943	1015/828	1022/787	400	450	1015/828	1022/787	1022/787	1022/787	1022/787	CFM	Watts	CFM	Watts	CFM	Watts	CFM	Watts	993	1013	1028	1023	1049	
	152/176	208/200	273/214	341/196	413/194	450	290	341/196	413/194	413/194	413/194	413/194	CFM	Watts	CFM	Watts	CFM	Watts	CFM	Watts	142	197	261	335	416	
3 tons †	993/1114	1008/1035	1017/943	1015/828	1022/787	450	290	1015/828	1022/787	1022/787	1022/787	1022/787	CFM	Watts	CFM	Watts	CFM	Watts	CFM	Watts	993	1013	1028	1023	1049	
	152/176	208/200	273/214	341/196	413/194	450	290	341/196	413/194	413/194	413/194	413/194	CFM	Watts	CFM	Watts	CFM	Watts	CFM	Watts	142	197	261	335	416	
	868/974	884/907	891/826	893/729	894/688	290	350	893/729	894/688	894/688	894/688	894/688	CFM	Watts	CFM	Watts	CFM	Watts	CFM	Watts	868	888	901	900	917	
	111/128	163/156	220/173	281/162	345/162	350	400	281/162	345/162	345/162	345/162	345/162	CFM	Watts	CFM	Watts	CFM	Watts	CFM	Watts	103	154	211	277	347	
	993/1114	1008/1035	1017/943	1015/828	1022/787	350	400	1015/828	1022/787	1022/787	1022/787	1022/787	CFM	Watts	CFM	Watts	CFM	Watts	CFM	Watts	993	1013	1028	1023	1049	
	152/176	208/200	273/214	341/196	413/194	450	290	341/196	413/194	413/194	413/194	413/194	CFM	Watts	CFM	Watts	CFM	Watts	CFM	Watts	142	197	261	335	416	
3 tons †	993/1114	1008/1035	1017/943	1015/828	1022/787	390 †	450	1015/828	1022/787	1022/787	1022/787	1022/787	CFM	Watts	CFM	Watts	CFM	Watts	CFM	Watts	993	1013	1028	1023	1049	
	152/176	208/200	273/214	341/196	413/194	390 †	450	341/196	413/194	413/194	413/194	413/194	CFM	Watts	CFM	Watts	CFM	Watts	CFM	Watts	142	197	261	335	416	
	993/1114	1008/1035	1017/943	1015/828	1022/787	400	450	1015/828	1022/787	1022/787	1022/787	1022/787	CFM	Watts	CFM	Watts	CFM	Watts	CFM	Watts	993	1013	1028	1023	1049	
	152/176	208/200	273/214	341/196	413/194	400	450	341/196	413/194	413/194	413/194	413/194	CFM	Watts	CFM	Watts	CFM	Watts	CFM	Watts	142	197	261	335	416	
	993/1114	1008/1035	1017/943	1015/828	1022/787	450	290	1015/828	1022/787	1022/787	1022/787	1022/787	CFM	Watts	CFM	Watts	CFM	Watts	CFM	Watts	993	1013	1028	1023	1049	
	152/176	208/200	273/214	341/196	413/194	450	290	341/196	413/194	413/194	413/194	413/194	CFM	Watts	CFM	Watts	CFM	Watts	CFM	Watts	142	197	261	335	416	

- † Factory Setting
- Status LED will blink once per 100 CFM requested. In torque mode, actual airflow may be lower.
- To prevent water blow-off, the max airflow demand allowable is 1000 CFM. If an outdoor multiplier and cooling airflow setting should result in a demand higher than 1000, the AFC will default the demand back to 1000.
- Torque mode will reduce airflow when static is above approximately 0.3" water column.
- All heating modes default to Constant CFM.
- In communicating mode, default CFM/Ton is 400.
- Cooling airflow values are with wet coil, no filter



Performance and Electrical Data

OUTDOOR MULTIPLIER (TONS)	TEM8A0C36V31DC & TEM8A0C42V41DC AIRFLOW PERFORMANCE (Constant CFM / Constant Torque)										CONSTANT CFM MODE / CONSTANT TORQUE MODE																																																																																																																																																																																																																																																																																																																																																																																																																																																																																																																																																																																																																																																																																																																																																																																																																																																																																																																																																																																																																																									
	COOLING AIRFLOW SETTING					EXTERNAL STATIC PRESSURE (Constant CFM / Constant Torque)					HEATING AIRFLOW SETTING					AIRFLOW POWER					EXTERNAL STATIC PRESSURE																																																																																																																																																																																																																																																																																																																																																																																																																																																																																																																																																																																																																																																																																																																																																																																																																																																																																																																																																																																																																															
	290 CFM/ton	350 CFM/ton	400 CFM/ton	450 CFM/ton	290 CFM/ton	0.1	0.3	0.5	0.7	0.9	0.1	0.3	0.5	0.7	0.9	290 CFM/ton	350 CFM/ton	400 CFM/ton	450 CFM/ton	290 CFM/ton	0.1	0.3	0.5	0.7	0.9																																																																																																																																																																																																																																																																																																																																																																																																																																																																																																																																																																																																																																																																																																																																																																																																																																																																																																																																																																																																																											
2.5 tons	735 / 837	883 / 972	1007 / 1084	1133 / 1198	143 / 177	727 / 702	884 / 849	1016 / 971	1033 / 874	1146 / 1093	700 / 593	882 / 746	1020 / 788	1140 / 919	1330 / 845	290	350	400	450	290	735	884	1007	1146	1330	660 / 415	870 / 577	1010 / 711	1130 / 845	1375	1686	1920	2150	2400	2700	3000	3300	3600	3900	4200	4500	4800	5100	5400	5700	6000	6300	6600	6900	7200	7500	7800	8100	8400	8700	9000	9300	9600	9900	10200	10500	10800	11100	11400	11700	12000	12300	12600	12900	13200	13500	13800	14100	14400	14700	15000	15300	15600	15900	16200	16500	16800	17100	17400	17700	18000	18300	18600	18900	19200	19500	19800	20100	20400	20700	21000	21300	21600	21900	22200	22500	22800	23100	23400	23700	24000	24300	24600	24900	25200	25500	25800	26100	26400	26700	27000	27300	27600	27900	28200	28500	28800	29100	29400	29700	30000	30300	30600	30900	31200	31500	31800	32100	32400	32700	33000	33300	33600	33900	34200	34500	34800	35100	35400	35700	36000	36300	36600	36900	37200	37500	37800	38100	38400	38700	39000	39300	39600	39900	40200	40500	40800	41100	41400	41700	42000	42300	42600	42900	43200	43500	43800	44100	44400	44700	45000	45300	45600	45900	46200	46500	46800	47100	47400	47700	48000	48300	48600	48900	49200	49500	49800	50100	50400	50700	51000	51300	51600	51900	52200	52500	52800	53100	53400	53700	54000	54300	54600	54900	55200	55500	55800	56100	56400	56700	57000	57300	57600	57900	58200	58500	58800	59100	59400	59700	60000	60300	60600	60900	61200	61500	61800	62100	62400	62700	63000	63300	63600	63900	64200	64500	64800	65100	65400	65700	66000	66300	66600	66900	67200	67500	67800	68100	68400	68700	69000	69300	69600	69900	70200	70500	70800	71100	71400	71700	72000	72300	72600	72900	73200	73500	73800	74100	74400	74700	75000	75300	75600	75900	76200	76500	76800	77100	77400	77700	78000	78300	78600	78900	79200	79500	79800	80100	80400	80700	81000	81300	81600	81900	82200	82500	82800	83100	83400	83700	84000	84300	84600	84900	85200	85500	85800	86100	86400	86700	87000	87300	87600	87900	88200	88500	88800	89100	89400	89700	90000	90300	90600	90900	91200	91500	91800	92100	92400	92700	93000	93300	93600	93900	94200	94500	94800	95100	95400	95700	96000	96300	96600	96900	97200	97500	97800	98100	98400	98700	99000	99300	99600	99900	100200	100500	100800	101100	101400	101700	102000	102300	102600	102900	103200	103500	103800	104100	104400	104700	105000	105300	105600	105900	106200	106500	106800	107100	107400	107700	108000	108300	108600	108900	109200	109500	109800	110100	110400	110700	111000	111300	111600	111900	112200	112500	112800	113100	113400	113700	114000	114300	114600	114900	115200	115500	115800	116100	116400	116700	117000	117300	117600	117900	118200	118500	118800	119100	119400	119700	120000	120300	120600	120900	121200	121500	121800	122100	122400	122700	123000	123300	123600	123900	124200	124500	124800	125100	125400	125700	126000	126300	126600	126900	127200	127500	127800	128100	128400	128700	129000	129300	129600	129900	130200	130500	130800	131100	131400	131700	132000	132300	132600	132900	133200	133500	133800	134100	134400	134700	135000	135300	135600	135900	136200	136500	136800	137100	137400	137700	138000	138300	138600	138900	139200	139500	139800	140100	140400	140700	141000	141300	141600	141900	142200	142500	142800	143100	143400	143700	144000	144300	144600	144900	145200	145500	145800	146100	146400	146700	147000	147300	147600	147900	148200	148500	148800	149100	149400	149700	150000	150300	150600	150900	151200	151500	151800	152100	152400	152700	153000	153300	153600	153900	154200	154500	154800	155100	155400	155700	156000	156300	156600	156900	157200	157500	157800	158100	158400	158700	159000	159300	159600	159900	160200	160500	160800	161100	161400	161700	162000	162300	162600	162900	163200	163500	163800	164100	164400	164700	165000	165300	165600	165900	166200	166500	166800	167100	167400	167700	168000	168300	168600	168900	169200	169500	169800	170100	170400	170700	171000	171300	171600	171900	172200	172500	172800	173100	173400	173700	174000	174300	174600	174900	175200	175500	175800	176100	176400	176700	177000	177300	177600	177900	178200	178500	178800	179100	179400	179700	180000	180300	180600	180900	181200	181500	181800	182100	182400	182700	183000	183300	183600	183900	184200	184500	184800	185100	185400	185700	186000	186300	186600	186900	187200	187500	187800	188100	188400	188700	189000	189300	189600	189900	190200	190500	190800	191100	191400	191700	192000	192300	192600	192900	193200	193500	193800	194100	194400	194700	195000	195300	195600	195900	196200	196500	196800	197100	197400	197700	198000	198300	198600	198900	199200	199500	199800	200100	200400	200700	201000	201300	201600	201900	202200	202500	202800	203100	203400	203700	204000	204300	204600	204900	205200	205500	205800	206100	206400	206700	207000	207300	207600	207900	208200	208500	208800	209100	209400	209700	210000	210300	210600	210900	211200	211500	211800	212100	212400	212700	213000	213300	213600	213900	214200	214500	214800	215100	215400	215700	216000	216300	216600	216900	217200	217500	217800	218100	218400	218700	219000	219300	219600	219900	220200	220500	220800	221100	221400	221700	222000	222300	222600	222900	223200	223500	223800	224100	224400	224700	225000	225300	225600	225900	226200	226500	226800	227100	227400	227700	228000	228300	228600	228900	229200	229500	229800	230100	230400	230700	231000	231300	231600	231900	232200	232500	232800	233100	233400	233700	234000	234300	234600	234900	235200	235500	235800	236100	236400	236700	237000	237300	237600	237900	238200	238500	238800	239100	239400	239700	240000	240300	240600	240900	241200	241500	241800	242100	242400	242700	243000	243300	243600	243900	244200	244500	244800	245100	245400	245700	246000	246300	246600	246900	247200	247500	247800	248100	248400	248700	249000	249300	249600	249900	250200	250500	250800	251100	251400	251700	252000	252300	252600	252900	253200	253500	253800	254100	254400	254700	255000	255300	255600	255900	256200	256500	256800	257100	257400	257700	258000	258300	258600	258900	259200	259500	259800	260100	260400	260700	261000	261300	261600	261900	262200	262500	262800	263100	263400	263700	264000	264300	264600	264900	265200	265500	265800	266100	266400	266700	267000	267300	267600	267900	268200	268500	268800	269100	269400	269700	270000	270300	270600	270900	271200	271500	271800	272100	272400	272700	273000	273300	273600	273900	274200	274500	274800	275100	275400	275700	276000	276300	276600	276900	277200	277500	277800	278100	278400	278700	279000	279300	279600	279900	280200	280500	280800	281100	281400	281700	282000	282300	282600	282900	283200	283500	283800	284100	284400	284700	285000	285300	285600	285900	286200	286500	286800	287100	287400	287700	288000	288300	288600	288900	289200	289500	289800	290100	290400	290700	291000	291300	291600	291900	292200	292500	292800	293100	293400	293700	294000	294300	294600	294900	295200	295500	29

OUTDOOR MULTIPLIER (TONS)	TEM8A0C48V41DC & TEM8B0C60V51DA AIRFLOW PERFORMANCE (Constant CFM / Constant Torque)										CONSTANT CFM MODE / CONSTANT TORQUE MODE																
	EXTERNAL STATIC PRESSURE (Constant CFM / Constant Torque)					HEATING AIRFLOW SETTING					AIRFLOW POWER					EXTERNAL STATIC PRESSURE											
	0.1	0.3	0.5	0.7	0.9	290	350	400	450	290	350	400	450	CFM	Watts	CFM	Watts	0.1	0.3	0.5	0.7	0.9					
3 tons	CFM	864/1015	856/883	851/772	850/676	820/590	290	CFM	290	CFM	864	856	851	843	822	CFM	864	856	851	843	822	CFM	864	856	851	843	822
	Watts	80/96	119/121	170/141	217/160	276/182	CFM/ton	CFM/ton	CFM/ton	CFM/ton	76	119	168	219	276	Watts	76	119	168	219	276	Watts	76	119	168	219	276
	CFM	1037/1179	1037/1059	1040/957	1030/866	1030/784	350	CFM	350	CFM	1037	1037	1040	1039	1032	CFM	1037	1037	1040	1039	1032	CFM	1037	1037	1040	1039	1032
	Watts	120/137	170/164	224/185	265/204	334/221	CFM/ton	CFM/ton	CFM/ton	CFM/ton	110	158	213	271	334	Watts	110	158	213	271	334	Watts	110	158	213	271	334
	CFM	1184/1317	1187/1207	1193/1110	1180/1024	1190/945	400	CFM	400	CFM	1184	1187	1193	1196	1197	CFM	1184	1187	1193	1196	1197	CFM	1184	1187	1193	1196	1197
	Watts	160/180	215/209	275/233	325/251	380/268	CFM/ton	CFM/ton	CFM/ton	CFM/ton	149	200	260	324	393	Watts	149	200	260	324	393	Watts	149	200	260	324	393
	CFM	1334/1457	1336/1354	1343/1263	1340/1181	1340/1105	450	CFM	450	CFM	1334	1336	1343	1348	1353	CFM	1334	1336	1343	1348	1353	CFM	1334	1336	1343	1348	1353
	Watts	205/232	265/265	335/290	395/310	460/327	CFM/ton	CFM/ton	CFM/ton	CFM/ton	198	254	318	388	461	Watts	198	254	318	388	461	Watts	198	254	318	388	461
	CFM	1015/1147	1000/1025	1000/921	1000/829	1000/746	290	CFM	290	CFM	1003	1002	1004	1002	992	CFM	1003	1002	1004	1002	992	CFM	1003	1002	1004	1002	992
	Watts	115/128	160/155	205/176	255/194	309/212	CFM/ton	CFM/ton	CFM/ton	CFM/ton	103	149	203	260	322	Watts	103	149	203	260	322	Watts	103	149	203	260	322
3.5 tons	CFM	1210/1341	1210/1231	1210/1136	1210/1050	1210/971	350	CFM	350	CFM	1209	1212	1218	1222	1224	CFM	1209	1212	1218	1222	1224	CFM	1209	1212	1218	1222	1224
	Watts	165/188	220/218	280/241	335/260	395/277	CFM/ton	CFM/ton	CFM/ton	CFM/ton	157	208	269	334	403	Watts	157	208	269	334	403	Watts	157	208	269	334	403
	CFM	1380/1503	1380/1403	1390/1314	1390/1233	1390/1159	400	CFM	400	CFM	1384	1386	1393	1397	1402	CFM	1384	1386	1393	1397	1402	CFM	1384	1386	1393	1397	1402
	Watts	195/252	285/286	355/312	420/332	485/349	CFM/ton	CFM/ton	CFM/ton	CFM/ton	217	275	340	412	487	Watts	217	275	340	412	487	Watts	217	275	340	412	487
	CFM	1560/1667	1560/1575	1570/1492	1570/1416	1579/1345	450	CFM	450	CFM	1563	1563	1566	1566	1564	CFM	1563	1563	1566	1566	1564	CFM	1563	1563	1566	1566	1564
	Watts	295/332	365/369	440/398	515/421	595/439	CFM/ton	CFM/ton	CFM/ton	CFM/ton	293	362	429	507	588	Watts	293	362	429	507	588	Watts	293	362	429	507	588
	CFM	1140/1304	1140/1192	1140/1095	1140/1008	1150/929	290	CFM	290	CFM	1144	1147	1152	1155	1154	CFM	1144	1147	1152	1155	1154	CFM	1144	1147	1152	1155	1154
	Watts	145/175	200/204	255/227	310/246	365/263	CFM/ton	CFM/ton	CFM/ton	CFM/ton	138	188	247	309	376	Watts	138	188	247	309	376	Watts	138	188	247	309	376
	CFM	1380/1525	1380/1426	1390/1338	1390/1257	1390/1183	350	CFM	350	CFM	1384	1386	1393	1397	1402	CFM	1384	1386	1393	1397	1402	CFM	1384	1386	1393	1397	1402
	Watts	220/262	285/295	355/322	420/343	485/360	CFM/ton	CFM/ton	CFM/ton	CFM/ton	217	275	340	412	487	Watts	217	275	340	412	487	Watts	217	275	340	412	487
4 tons	CFM	1590/1711	1590/1621	1590/1539	1590/1464	1600/1394	400	CFM	400	CFM	1589	1588	1591	1589	1585	CFM	1589	1588	1591	1589	1585	CFM	1589	1588	1591	1589	1585
	Watts	305/356	380/267	455/356	535/267	610/466	CFM/ton	CFM/ton	CFM/ton	CFM/ton	305	376	444	522	604	Watts	305	376	444	522	604	Watts	305	376	444	522	604
	CFM	1790/1898	1790/1816	1800/1741	1800/1670	1810/1604	450	CFM	450	CFM	1800	1794	1791	1773	1745	CFM	1800	1794	1791	1773	1745	CFM	1800	1794	1791	1773	1745
	Watts	410/474	495/597	585/548	670/575	760/597	CFM/ton	CFM/ton	CFM/ton	CFM/ton	419	509	575	660	749	Watts	419	509	575	660	749	Watts	419	509	575	660	749
	CFM	1430/1571	1440/1475	1440/1388	1440/1309	1440/1236	290	CFM	290	CFM	1435	1436	1442	1446	1450	CFM	1435	1436	1442	1446	1450	CFM	1435	1436	1442	1446	1450
	Watts	240/283	310/318	375/345	445/367	515/384	CFM/ton	CFM/ton	CFM/ton	CFM/ton	237	297	364	437	514	Watts	237	297	364	437	514	Watts	237	297	364	437	514
	CFM	1740/1851	1740/1767	1750/1690	1750/1619	1760/1552	350 †	CFM	350 †	CFM	1747	1742	1740	1728	1707	CFM	1747	1742	1740	1728	1707	CFM	1747	1742	1740	1728	1707
	Watts	380/442	465/482	550/514	635/541	720/562	CFM/ton	CFM/ton	CFM/ton	CFM/ton	388	472	539	623	710	Watts	388	472	539	623	710	Watts	388	472	539	623	710
	CFM	2000/2087	2000/2012	2010/1942	1980/1873	1870/317	400	CFM	400	CFM	2015	2007	1995	1951	1877	CFM	2015	2007	1995	1951	1877	CFM	2015	2007	1995	1951	1877
	Watts	540/619	635/663	735/700	810/729	810/378	CFM/ton	CFM/ton	CFM/ton	CFM/ton	559	679	739	810	810	Watts	559	679	739	810	810	Watts	559	679	739	810	810
CFM	2260/2141	2210/2068	2100/1999	1980/903	1870/315	450	CFM	450	CFM	2125	2117	2100	2038	1932	CFM	2125	2117	2100	2038	1932	CFM	2125	2117	2100	2038	1932	
Watts	745/686	810/729	810/766	810/359	810/405	CFM/ton	CFM/ton	CFM/ton	CFM/ton	641	779	810	810	810	Watts	641	779	810	810	810	Watts	641	779	810	810	810	

- † Factory Setting
- Status LED will blink once per 100 CFM requested. In torque mode, actual airflow may be lower.
- In communicating mode, default CFM/Ton is 400.
- Torque mode will reduce airflow when static is above approximately 0.3" water column.
- All heating modes default to Constant CFM.
- Cooling airflow values are with wet coil, no filter



Performance and Electrical Data

Note: Heater size needs to be set in Configuration Menu.

Table 1. Electrical Data

TEM8A0B24V21DC HEATER DATA											
Heater Model No.	No. of Circuits/ Phases	240 Volt					208 Volt				
		Capacity		Heater Amps per Circuit	Minimum Circuit Ampacity	Maximum Overload Protection	Capacity		Heater Amps per Circuit	Minimum Circuit Ampacity	Maximum Overload Protection
		kW	BTUH				kW	BTUH			
No Heater				2.8 *	4	15			2.8 *	4	15
BAYHTR1504BRK BAYHTR1504LUG	1/1	3.84	13100	16.0	24	25	2.88	9800	13.8	21	25
BAYHTR1505BRK BAYHTR1505LUG	1/1	4.80	16400	20.0	29	30	3.60	12300	17.3	25	25
BAYHTR1508BRK BAYHTR1508LUG	1/1	7.68	26200	32.0	44	45	5.76	19700	27.7	38	40
BAYHTR1510BRK BAYHTR1510LUG	1/1	9.60	32800	40.0	54	60	7.20	24600	34.6	47	50
BAYHTR1517BRK Circuit 1 ^(a)	2/1	9.60	32800	40.0	54	60	7.20	24600	34.6	47	50
BAYHTR1517BRK Circuit 2		4.80	16400	20.0	25	25	3.60	12300	17.3	22	25
BAYHTR3510LUG	1/3	9.60	32800	23.1	32	35	7.20	24600	20.0	28	30
BAYHTR3517LUG	1/3	14.40	49100	34.6	46	50	10.80	36900	30.0	41	45

* = Motor Amps

^(a) MCA and MOP for circuit 1 contains the motor amps

Table 2. Electrical Data

TEM8A0B30V31DC HEATER DATA											
Heater Model No.	No. of Circuits/ Phases	240 Volt					208 Volt				
		Capacity		Heater Amps per Circuit	Minimum Circuit Ampacity	Maximum Overload Protection	Capacity		Heater Amps per Circuit	Minimum Circuit Ampacity	Maximum Overload Protection
		kW	BTUH				kW	BTUH			
No Heater				3.9 *	5	15			3.9 *	5	15
BAYHTR1504BRK BAYHTR1504LUG	1/1	3.84	13100	16.0	25	25	2.88	9800	13.8	22	25
BAYHTR1505BRK BAYHTR1505LUG	1/1	4.80	16400	20.0	30	30	3.60	12300	17.3	27	30
BAYHTR1508BRK BAYHTR1508LUG	1/1	7.68	26200	32.0	45	45	5.76	19700	27.7	39	40
BAYHTR1510BRK BAYHTR1510LUG	1/1	9.60	32800	40.0	55	60	7.20	24600	34.6	48	50
BAYHTR1517BRK Circuit 1 ^(a)	2/1	9.60	32800	40.0	55	60	7.20	24600	34.6	48	50
BAYHTR1517BRK Circuit 2		4.80	16400	20.0	25	25	3.60	12300	17.3	22	25
BAYHTR3510LUG	1/3	9.60	32800	23.1	33	35	7.20	24600	20.0	29	30
BAYHTR3517LUG	1/3	14.40	49100	34.6	48	50	10.80	36900	30.0	42	45

* = Motor Amps

^(a) MCA and MOP for circuit 1 contains the motor amps

Table 3. Electrical Data

TEM8A0C36V31DC, TEM8A0C42V41DC HEATER DATA											
Heater Model No.	No. of Circuits/ Phases	240 Volt					208 Volt				
		Capacity		Heater Amps per Circuit	Minimum Circuit Ampacity	Maximum Overload Protection	Capacity		Heater Amps per Circuit	Minimum Circuit Ampacity	Maximum Overload Protection
		kW	BTUH				kW	BTUH			
No Heater				3.9 *	5	15			3.9 *	5	15
BAYHTR1504BRK BAYHTR1504LUG	1/1	3.84	13100	16.0	25	25	2.88	9800	13.8	22	25
BAYHTR1505BRK BAYHTR1505LUG	1/1	4.80	16400	20.0	30	30	3.60	12300	17.3	27	30
BAYHTR1508BRK BAYHTR1508LUG	1/1	7.68	26200	32.0	45	45	5.76	19700	27.7	39	40
BAYHTR1510BRK BAYHTR1510LUG	1/1	9.60	32800	40.0	55	60	7.20	24600	34.6	48	50
BAYHTR1517BRK Circuit 1 ^(a)	2/1	9.60	32800	40.0	55	60	7.20	24600	34.6	48	50
BAYHTR1517BRK Circuit 2		4.80	16400	20.0	25	25	3.60	12300	17.3	22	25
BAYHTR1523BRK Circuit 1 ^(a)	2/1	9.60	32800	40.0	55	60	7.20	24600	34.6	48	50
BAYHTR1523BRK Circuit 2		9.60	32800	40.0	50	50	7.20	24600	34.6	43	45
BAYHTR3510LUG	1/3	9.60	32800	23.1	33	35	7.20	24600	20.0	29	30
BAYHTR3517LUG	1/3	14.40	49100	34.6	48	50	10.80	36900	30.0	42	45

* = Motor Amps

^(a) MCA and MOP for circuit 1 contains the motor amps



Performance and Electrical Data

Table 4. Electrical Data

TEM8A0C48V41DC, TEM8B0C60V51DA HEATER DATA											
Heater Model No.	No. of Circuits/ Phases	240 Volt					208 Volt				
		Capacity		Heater Amps per Circuit	Minimum Circuit Ampacity	Maximum Overload Protection	Capacity		Heater Amps per Circuit	Minimum Circuit Ampacity	Maximum Overload Protection
		kW	BTUH				kW	BTUH			
No Heater				5.7 *	7	15			5.7 *	7	15
BAYHTR1504BRK BAYHTR1504LUG	1/1	3.84	13100	16.0	27	30	2.88	9800	13.8	24	25
BAYHTR1505BRK BAYHTR1505LUG	1/1	4.80	16400	20.0	32	35	3.60	12300	17.3	29	30
BAYHTR1508BRK BAYHTR1508LUG	1/1	7.68	26200	32.0	47	50	5.76	19700	27.7	42	45
BAYHTR1510BRK BAYHTR1510LUG	1/1	9.60	32800	40.0	57	60	7.20	24600	34.6	50	50
BAYHTR1517BRK Circuit 1 ^(a)	2/1	9.60	32800	40.0	57	60	7.20	24600	34.6	50	50
BAYHTR1517BRK Circuit 2		4.80	16400	20.0	25	25	3.60	12300	17.3	22	25
BAYHTR1523BRK Circuit 1 ^(a)	2/1	9.60	32800	40.0	57	60	7.20	24600	34.6	50	50
BAYHTR1523BRK Circuit 2		9.60	32800	40.0	50	50	7.20	24600	34.6	43	45
BAYHTR1525BRK Circuit 1 ^(a)	4/1	6.00	20500	25.0	38	40	4.50	15400	21.6	34	35
BAYHTR1525BRK Circuit 2		6.00	20500	25.0	31	35	4.50	15400	21.6	27	30
BAYHTR1525BRK Circuit 3		6.00	20500	25.0	31	35	4.50	15400	21.6	27	30
BAYHTR1525BRK Circuit 4		6.00	20500	25.0	31	35	4.50	15400	21.6	27	30
BAYHTR3510LUG	1/3	9.60	32800	23.1	35	35	7.20	24600	20.0	31	35
BAYHTR3517LUG	1/3	14.40	49100	34.6	50	50	10.80	36900	30.0	44	45

* = Motor Amps

^(a) MCA and MOP for circuit 1 contains the motor amps



Minimum Airflow CFM

TEM8A0B24V21DC, TEM8A0B30V31DC		
Heater	Minimum Heater Airflow CFM	
	With Heat Pump	Without Heat Pump
BAYHTR1504BRK, BAYHTR1504LUG BAYHTR1505BRK, BAYHTR1505LUG	650	600
BAYHTR1508BRK, BAYHTR1508LUG	850	700
BAYHTR1510BRK, BAYHTR1510LUG	850	700
BAYHTR1517BRK	1000	850
BAYHTR3510LUG	850	700
BAYHTR3517LUG	1000	850

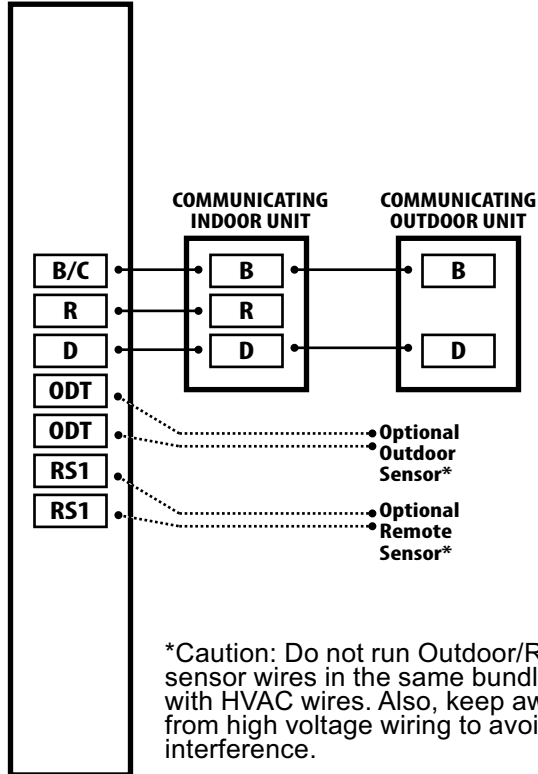
TEM8A0C36V31DC, TEM8A0C42V41DC		
Heater	Minimum Heater Airflow CFM	
	With Heat Pump	Without Heat Pump
BAYHTR1504BRK, BAYHTR1504LUG BAYHTR1505BRK, BAYHTR1505LUG	675	675
BAYHTR1508BRK, BAYHTR1508LUG	950	900
BAYHTR1510BRK, BAYHTR1510LUG	950	900
BAYHTR1517BRK	950	900
BAYHTR3510LUG	950	900
BAYHTR3517LUG	1050	950
BAYHTR1523BRK	1500	1300

TEM8A0C48V41DC, TEM8B0C60V51DA		
Heater	Minimum Heater Airflow CFM	
	With Heat Pump	Without Heat Pump
BAYHTR1504BRK, BAYHTR1504LUG BAYHTR1505BRK, BAYHTR1505LUG	900	800
BAYHTR1508BRK, BAYHTR1508LUG	1200	1000
BAYHTR1510BRK, BAYHTR1510LUG	1350	1000
BAYHTR1517BRK	1400	1100
BAYHTR3510LUG	1200	1000
BAYHTR3517LUG	1400	1100
BAYHTR1523BRK	1430	1300
BAYHTR1525BRK	1850	1600

Field Wiring

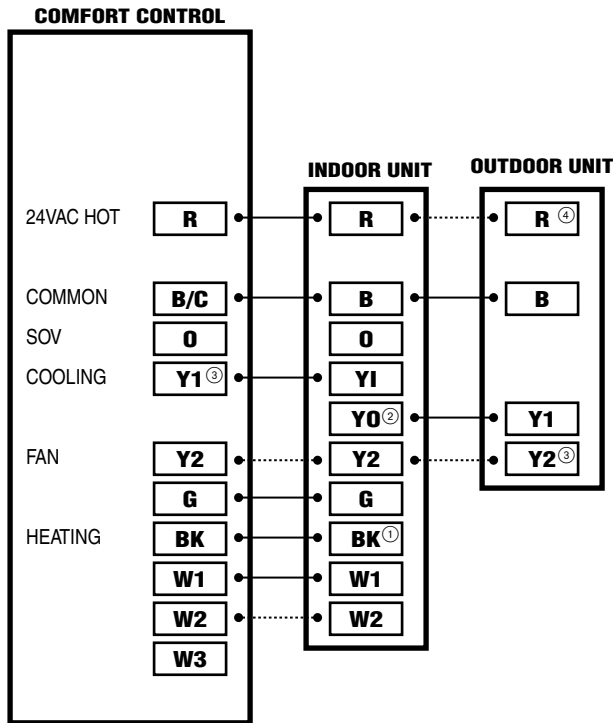
Communicating Controls Wiring Diagram

**COMMUNICATING
COMFORT
CONTROL**



*Caution: Do not run Outdoor/Remote sensor wires in the same bundle with HVAC wires. Also, keep away from high voltage wiring to avoid interference.

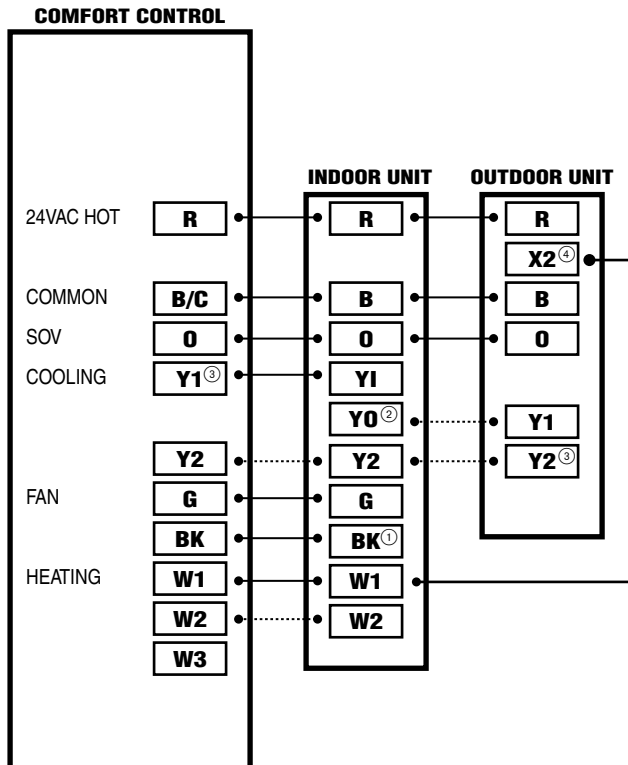
1 OR 2 STAGE COOLING WITH TEM8 MODEL VARIABLE SPEED AIR HANDLER



NOTES:

1. Cut the BK jumper on the AFC when using the BK functionality from the thermostat.
2. Y1 and YO connections must be made as shown for external switch functionality. (See table 5) Can be used for condensate overflow switch as well as other functions. Configure this functionality from the AFC seven segment display.
3. When using the BK feature from the comfort control, the Y1 & Y2 inputs to the AFC are for the seven segment display only. The BK feature has 100% control over air flow.
4. Y2 connections at outdoor unit are required only for two stage units.

1 OR 2 STAGE HEAT PUMP WITH TEM8 VARIABLE SPEED AIR HANDLER

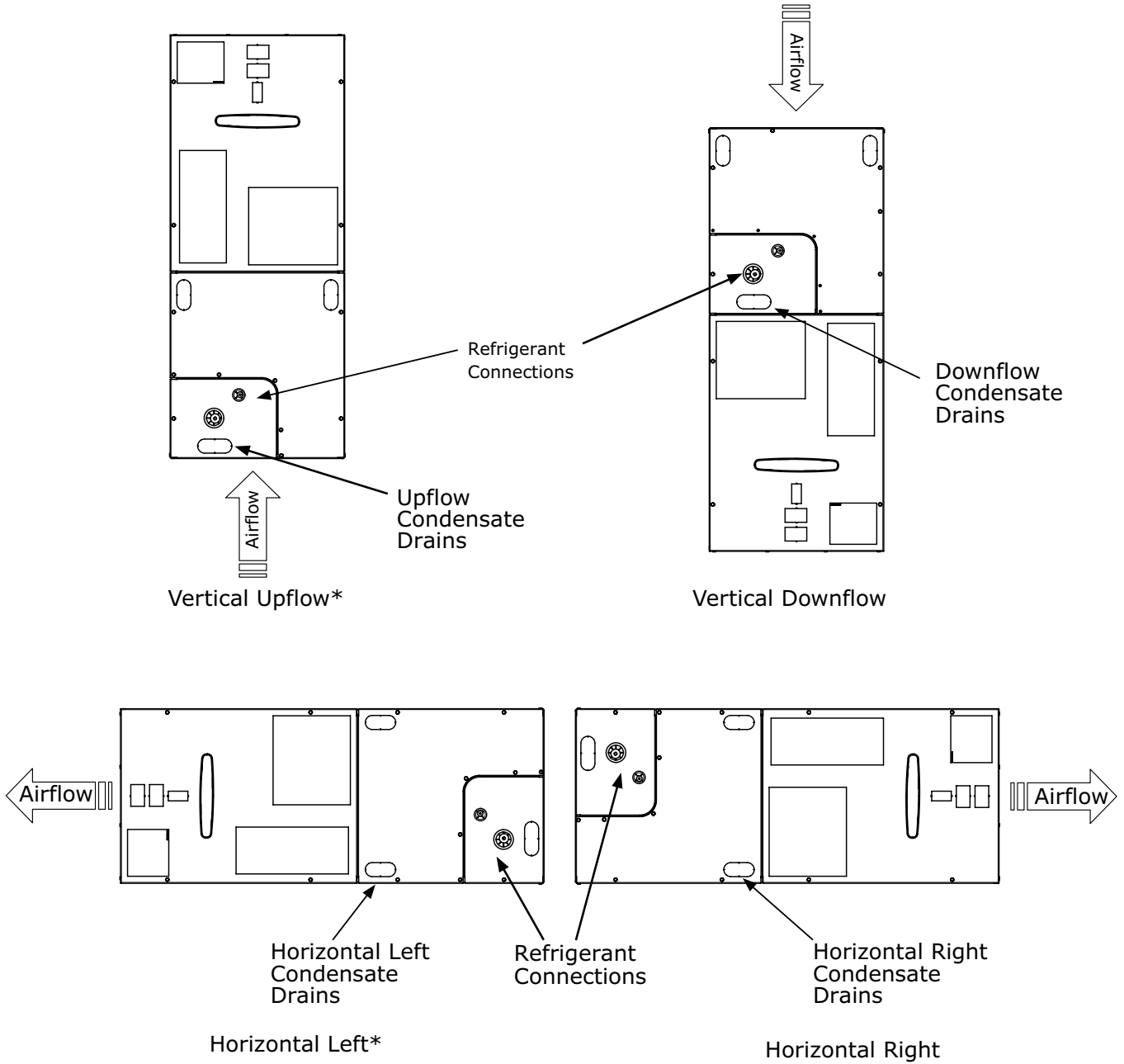


NOTES:

1. Cut the BK jumper on the AFC when using the BK functionality from the thermostat.
2. Y1 and YO connections must be made as shown for external switch functionality. (See table 5) Can be used for condensate overflow switch as well as other functions. Configure this functionality from the AFC seven segment display.
3. Connection to X2 is not required when using the 402, 624, 824, or relay panel controls.
4. When using the BK feature from the comfort control, the Y1 & Y2 inputs to the AFC are for the 7 segment display only. The BK feature has 100% control over air flow.

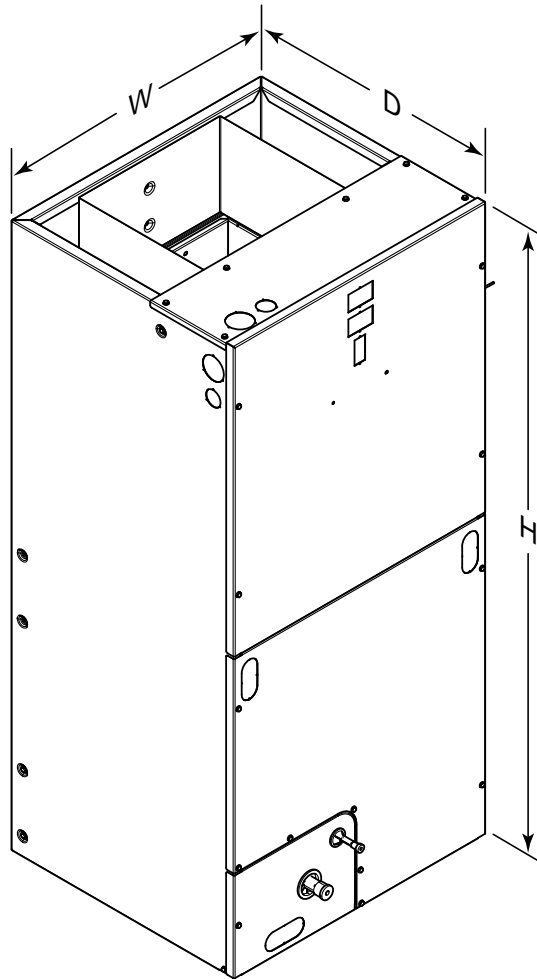
TEM Convertibility

Figure 1. Multi-Position Air Handler
 * = No Internal Modifications Required.





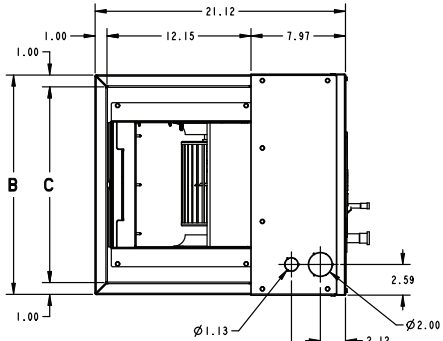
TEM8 Air Handler Dimensional Data



Model No.	H	W	D
TEM8A0B24V21DC	46.77	18.50	21.13
TEM8A0B30V31DC	46.77	18.50	21.13
TEM8A0C36V31DC	51.27	23.50	21.13
TEM8A0C42V41DC	51.27	23.50	21.13
TEM8A0C48V41DC	57.40	23.50	21.13
TEM8B0C60V51DA	57.40	23.50	21.13

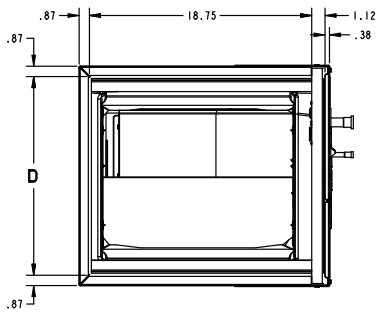
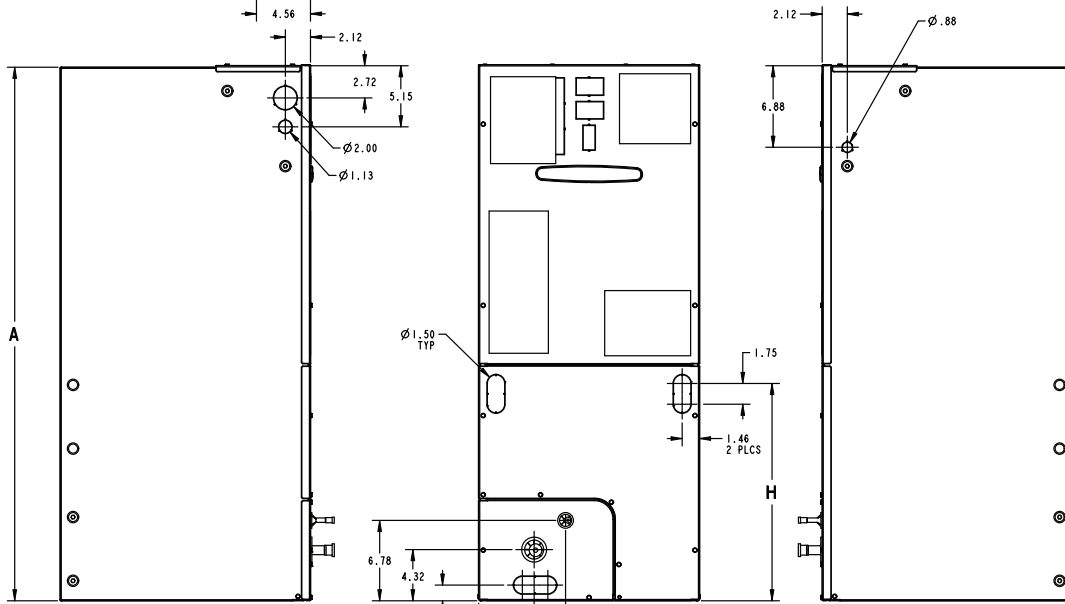


Outline Drawing



MINIMUM UNIT CLEARANCE TABLE	
	SERVICE CLEARANCE (RECOMMENDED)
SIDES	2"
FRONT	21"
BACK	0"
INLET DUCT	1"
OUTLET DUCT	N/A

NOTE: THIS UNIT IS APPROVED FOR INSTALLATION CLEARANCES TO COMBUSTIBLE MATERIAL AS STATED ON THE UNIT RATING NAMEPLATE



PRODUCT DIMENSIONS

Air Handler Model	A	B	C	D	E	F	H	Flow Control	Gas Line Braze
TEM8A0B24, 30	46.77	18.50	16.50	16.75	4.68	7.33	20.09	TXV	3/4
TEM8A0C36, 42	51.27	23.50	21.50	21.75	7.01	9.66	24.59	TXV	7/8
TEM8A0C48/ TEM8B0C60	57.40	23.50	21.50	21.75	4.68	9.66	27.19	TXV	7/8

All dimensions are in inches



Trane - by Trane Technologies (NYSE: TT), a global innovator - creates comfortable, energy efficient indoor environments for commercial and residential applications. For more information, please visit trane.com or tranetechnologies.com.



Trane has a policy of continuous data improvement and it reserves the right to change design and specifications without notice. We are committed to using environmentally conscious print practices.