

DaVinci

CUSTOM FIREPLACES™



DaVinci 59 GreenSmart Electric Fireplace Manual

**PLEASE READ THESE INSTRUCTIONS CAREFULLY BEFORE INSTALLATION AND OPERATION.
KEEP THEM IN A SAFE PLACE FOR FUTURE REFERENCE.**

INSTALLER: Leave this manual with the appliance. French language manuals at davincifireplace.com.
CONSUMER: Retain this manual for future reference. Manuels de langue Française à davincifireplace.com

Overview

This manual details the installation and operation of the DaVinci 59 GreenSmart Electric fireplace.

Listing Details

This appliance was listed to UL 2021 4th Edition Dedicated Electric Room Heaters / CSA C22.2 No.46-13(R2018) – Electric Air-Heaters. The listing label adhered to the back of the appliance. A copy is shown to the right.

Dealer Information

Please record your dealer information here for future reference:

Dealer Name: _____

Dealer Address: _____

Dealer E-Mail: _____

Dealer Phone #: _____



ELECTRIC FIREPLACE

MODEL(HVIN): DaVinci GSE59

VOLTAGE: 120V/240V AC

FREQUENCY: 60HZ

WATTS: 1400 W/2800 W

SERIAL NO: _____



TRAVIS
INDUSTRIES
HOUSE OF FIRE

Travis Industries Inc.
12521 Harbour Reach Drive
Mukilteo, WA 98275

WIFI MODULE
FCC ID: 2ANDL-DaVinci GSE59
IC: 23243-Davinci GSE59

Made in China

- Overview2**
- Listing Details.....2**
- Installation Options.....7**
- Specifications7**
- Packing List8**
- Recommended Installation Procedure9**
- Recommended Specialty Tools.....9**
- Dimensions - Single Sided Configurations10**
- Minimum Framing Dimensions – Single Sided configuration14**
- Minimum Framing Dimensions – Bay configuration15**
- Minimum Framing Dimensions – Left Corner configurations16**
- Minimum Framing Dimensions – Right Corner configuration17**
- Hearth Requirements.....18**
- Electrical Connection19**
 - Hardwire Installations 120v or 240v 19
 - Power Cord Installations (120v Only)..... 20
- Installation21**
 - Preparing the Appliance..... 21
 - Install Appliance into Framing 21
- Fireplace Configurations.....24**
 - Fuel Bed Uplights 25
- Facing & Mantel Requirements26**
 - Facing Requirements 26
 - Mantel Requirements 26

- TV Installations above the Fireplace 27**
- Log and Media Installation 28**
- Optional Equipment 34**
 - Ambient Light Kit (Optional) SKU: 94400151 34
- Before You Begin 35**
- Normal Operating Sounds..... 35**
- Location of Controls 36**
- Manual Control Operation 37**
 - On/Off 37
 - Wi-Fi On/Off..... 37
 - Standby..... 37
 - Heat Mode 37
 - Preset Mode 37
- Remote Control Operation 38**
 - How to Create Your Own Preset Fire Mode..... 38
- App Control..... 40**
 - AUTOMATIC APP INSTALLATION AND SETUP..... 40
 - MANUAL APP INSTALLATION AND SETUP 43
 - Advanced Wi-Fi Router Guidance 48
- Voice Control 49**
- Yearly Service Procedure..... 51**
- Glass Cleaning 51**
- Troubleshooting 52**
- Replacement Parts List 53**
- Wiring Diagram..... 54**

Safety Warnings

Before installation, check that all parts included are undamaged. If the appliance is damaged, check with the dealer before installation and operation. If the supply cord is damaged, it must be replaced by the manufacturer, its service agent, or similarly qualified persons in order to avoid a hazard.

CAUTION: In order to avoid a hazard due to the inadvertent resetting of the thermal cut-out, this appliance must not be supplied through an external switching device, such as a timer, or connected to a circuit that is regularly switched on and off.

- **DO NOT** use the appliance outdoors.
 - **DO NOT** use the appliance in the immediate surroundings of a bath, a shower, or a swimming pool.
 - **DO NOT** leave the appliance unattended during use.
 - **DO NOT** run the main electrical cable under carpet, rugs, etc.
 - **DO NOT** locate the appliance immediately below a fixed socket outlet or connection box.
 - **DO NOT** install the appliance using an extension cord.
 - **DO NOT** install the appliance in a preexisting fireplace with open flue.
 - **DO NOT** insert any objects into the appliance.
 - **DO NOT** operate the appliance near flammable materials or fire.
 - **DO NOT** clean the appliance with abrasive cleaners.
 - **DO NOT** use this fireplace in rooms that have explosive gas in them (for example gasoline or propane), or if you are using solvents, glue, aerosol spray, or in flammable paints, as these may catch fire.
 - **DO NOT** use this appliance in small rooms when they are occupied by persons not capable of leaving the room on their own, unless constant supervision is provided.
-
- **DO** Turn off power to the appliance when not in use or before cleaning and maintenance.
 - **DO** keep the appliance at least 3' away from furniture, curtains, or other combustible material when in use.
 - **DO** ensure the plug remains easily accessible after installation of the appliance.
 - **DO** use this appliance on a horizontal and stable surface.

CAUTION: Some parts of the appliance can become very hot and cause burns. Do not leave the appliance in operation with unsupervised children or vulnerable individuals.

NOTE: A dedicated, properly fused 13 Amp circuit is required, rated for the appropriate voltage (120V or 240V). An isolation switch should also be incorporated in cases where the product plug is inaccessible after installation.

NOTE: This appliance must only be used with a properly grounded circuit.

WARNING: The installation of this appliance must comply with local building codes and other applicable regulations to reduce the risk of fire, electric shock, and injury to persons. Check with the local authority having jurisdiction for any additional requirements in your area.

WARNING: To reduce the risk of fire, electric shock, or injury to persons, always use a licensed electrician.

WARNING: In order to avoid overheating, do not cover the heater or air vents located on the appliance or obstruct the air circulation around the appliance.



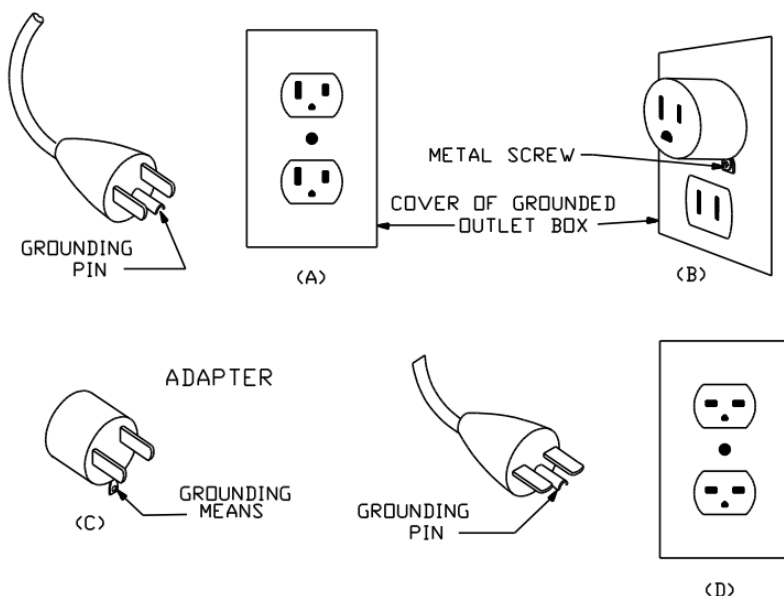
WARNING! DO NOT COVER

Safety Warnings (continued)

- **Read all instructions before installing or using this heater.**
- This heater is hot when in use. To avoid burns, do not let bare skin touch hot surfaces. Keep combustible materials, such as furniture, pillows, bedding, papers, clothes, etc., and curtains at least 3 feet (1M) from the front of the heater.
- Extreme caution is necessary when any heater is used by or near children or individuals unable to move without the assistance of others and whenever the heater is left operating and unattended.
- Do not operate any heater after it malfunctions. Disconnect power at the service panel and have the heater inspected by a reputable electrician before returning it to service.
- To disconnect the heater, turn the controls to off, and turn off the power to the heater circuit at the main disconnect panel.
- Do not insert or allow foreign objects to enter any ventilation or exhaust opening as this may cause an electric shock, fire, or damage to the heater.
- To prevent a possible fire, do not block air intakes or exhaust in any manner.
- This heater has hot, arching, or sparking parts inside. Do not use the appliance in areas where gasoline, paint, or flammable vapors or liquids are used or stored.
- Use this heater only as described in this manual. Any other use not recommended by the manufacturer may cause fire, electric shock, or injury to persons.
- This heater may include an audible or visual alarm to warn that parts of the heater are getting excessively hot. If the alarm sounds (or illuminates), immediately turn the heater off and inspect for any objects on or adjacent to the heater that may have blocked the airflow or otherwise caused high temperatures to have occurred. **DO NOT OPERATE THE HEATER WITH THE ALARM SOUNDING (OR ILLUMINATING).**
- This heater is for use on 120volts or 240volts. If using 120 volts and the optional 120volt power cord, you will find that the supplied cord has a plug as shown in (A) below. An adapter as shown in (C) is available for connecting three-blade grounding-type plugs to two-slot receptacles. The Green grounding lug extending from the adapter must be connected to a permanent ground such as a properly grounded outlet box. The adapter should not be used if a three-slot grounded receptacle is available.

NOTE: Adaptors are NOT for use in Canada.

Grounding methods



Safety Warnings (continued)

- This device complies with part 15 of the FCC Rules. Operation is subject to the following two conditions: (1) This device may not cause harmful interference, and (2) this device must accept any interference received, including interference that may cause undesired operation.

FCC warning:

Any Changes or modifications not expressly approved by the party responsible for compliance could void the user's authority to operate the equipment.

Note: This equipment has been tested and found to comply with the limits for a Class B digital device, pursuant to part 15 of the FCC Rules. These limits are designed to provide reasonable protection against harmful interference in a residential installation. This equipment generates uses and can radiate radio frequency energy and, if not installed and used in accordance with the instructions, may cause harmful interference to radio communications. However, there is no guarantee that interference will not occur in a particular installation. If this equipment does cause harmful interference to radio or television reception, which can be determined by turning the equipment off and on, the user is encouraged to try to correct the interference by one or more of the following measures:

- Reorient or relocate the receiving antenna.
 - Increase the separation between the equipment and receiver.
 - Connect the equipment into an outlet on a circuit different from that to which the receiver is connected.
 - Consult the dealer or an experienced radio/TV technician for help.
- The device has been evaluated to meet general RF exposure requirement. The device can be used in portable exposure condition without restriction.

IC warning

This device complies with Industry Canada license-exempt RSS standard(s).

Operation is subject to the following two conditions:

- (1) This device may not cause interference, and
- (2) This device must accept any interference, including interference that may cause undesired operation of the device.

This equipment complies with IC RSS-102 radiation exposure limits set forth for an uncontrolled environment. This equipment should be installed and operated with minimum distance 20cm between the radiator & your body.

- **SAVE THESE INSTRUCTIONS**



Proposition 65 Warning: This product can expose you to chemicals including Lead and Lead Compounds, which are known to the State of California to cause cancer, and BBP and DEHP, which are known to the State of California to cause birth defects or other reproductive harm. For more information go to www.P65Warnings.ca.gov



WARNING



Read this entire manual before proceeding with the installation.

Installation Options

- Residential or Commercial Installations
- Raised or Floor Placement
- Can be installed as a Single Sided, Bay, Left Corner or Right Corner Fireplace
- Works with Alexa and Google assistants
- Optional LED ambient lighting kit (sku# 94400151)

Specifications

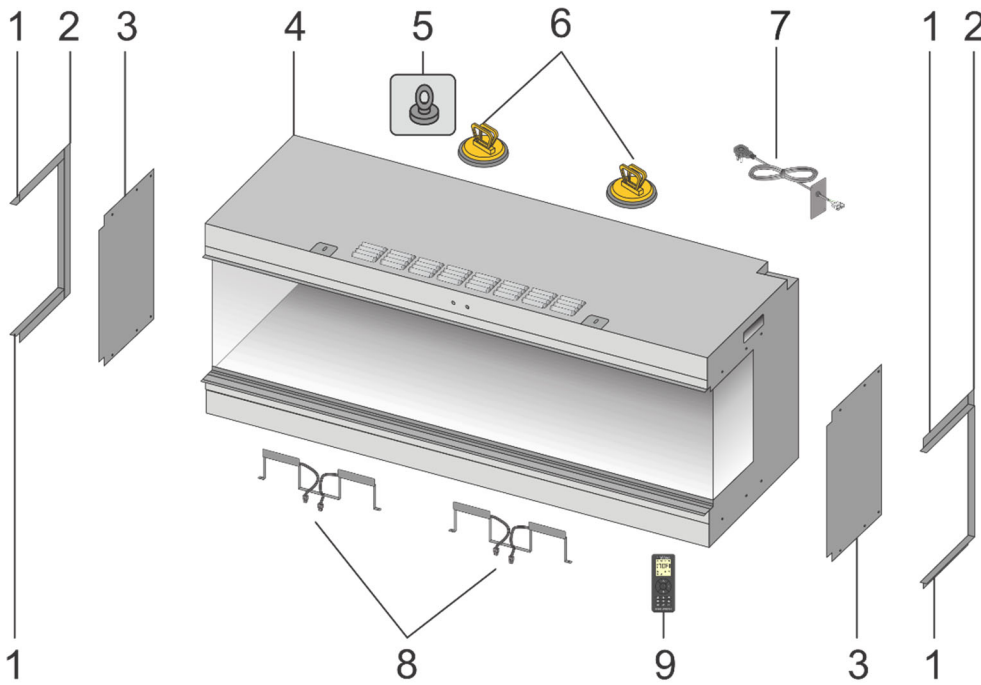
| 59 GREENSMART ELECTRIC FIREPLACE | |
|-------------------------------------|--|
| Weight (lbs.) | 200 |
| Dimensions (inches) | H23-1/8" x W59-3/8" x D19-3/8" |
| Supply Voltage | 120V AC 60Hz or 240V AC 60Hz |
| Max. Power Consumption (watts) | If wired to 120v AC - 1400 If wired to 240v AC - 2800 |
| Power for Flame Effect (watts) | 75 |
| Power for Ambient Light Kit (watts) | 9.6 |

| HEAT OUTPUT | LOW VALUE | HIGH VALUE |
|-----------------------------------|-----------|------------|
| Heat Output if wired 120v (watts) | 700 | 1400 |
| Heat Output if wired 240v (watts) | 1400 | 2800 |

8

Installation (for qualified installers only)

Packing List



| BOX 8 |
|------------------------------|
| Black resin embers (x3 bags) |
| Clear resin embers (x2 bags) |

| BOX 1 |
|----------------------------|
| User manual/warranty card |
| Remote handset |
| AAA battery (x2) |
| 120v Power cord (optional) |
| ST4x8 screw |

| BOX 2 |
|--------------------------|
| Back panel uplights (x2) |

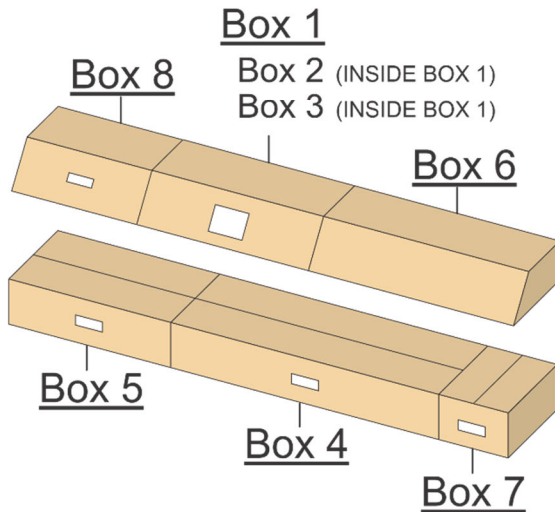
| BOX 3 |
|----------------------------------|
| Side Tile Stop (top/bottom) (x4) |
| Side Tile Stop (side) (x2) |

| BOX 6 |
|-----------|
| Log set C |

| BOX 5 |
|-----------|
| Log set B |

| BOX 4 |
|-----------|
| Log set A |

| BOX 7 |
|-------------------------------|
| Black glass ember (x3 bags) |
| Grey ceramic chips (x1 bags) |
| Black ceramic chips (x1 bags) |



| No. | DESCRIPTION | No. | DESCRIPTION |
|-----|---------------------------------------|-----|------------------------------|
| 1 | Side Tile Stop (top/bottom) (x4) | 6 | Glass Suction Cup Tools (x2) |
| 2 | Side Tile Stop (side)(x2) | 7 | 120v Power cord |
| 3 | Side panel (x2) | 8 | Back panel uplight (x2) |
| 4 | DaVinci GreenSmart Electric Fireplace | 9 | Remote handset |
| 5 | Magnetic tool | | |

Recommended Installation Procedure

1. Prepare the installation location. If placing the fireplace on a platform, build the platform, making sure to accommodate the weight of the fireplace. Verify the platform is level and plumb.
2. If installing the fireplace in a left corner, right corner, or bay configuration prepare the fireplace for that configuration now (see page 24 for details).
3. Run electrical supply to the location of the fireplace (see electrical requirements section for details).
4. Install the fireplace into the framed chase. Attach the nailing flanges to the framing to support the fireplace (see page 20 for details).
5. Connect the electrical supply wires to the fireplace.

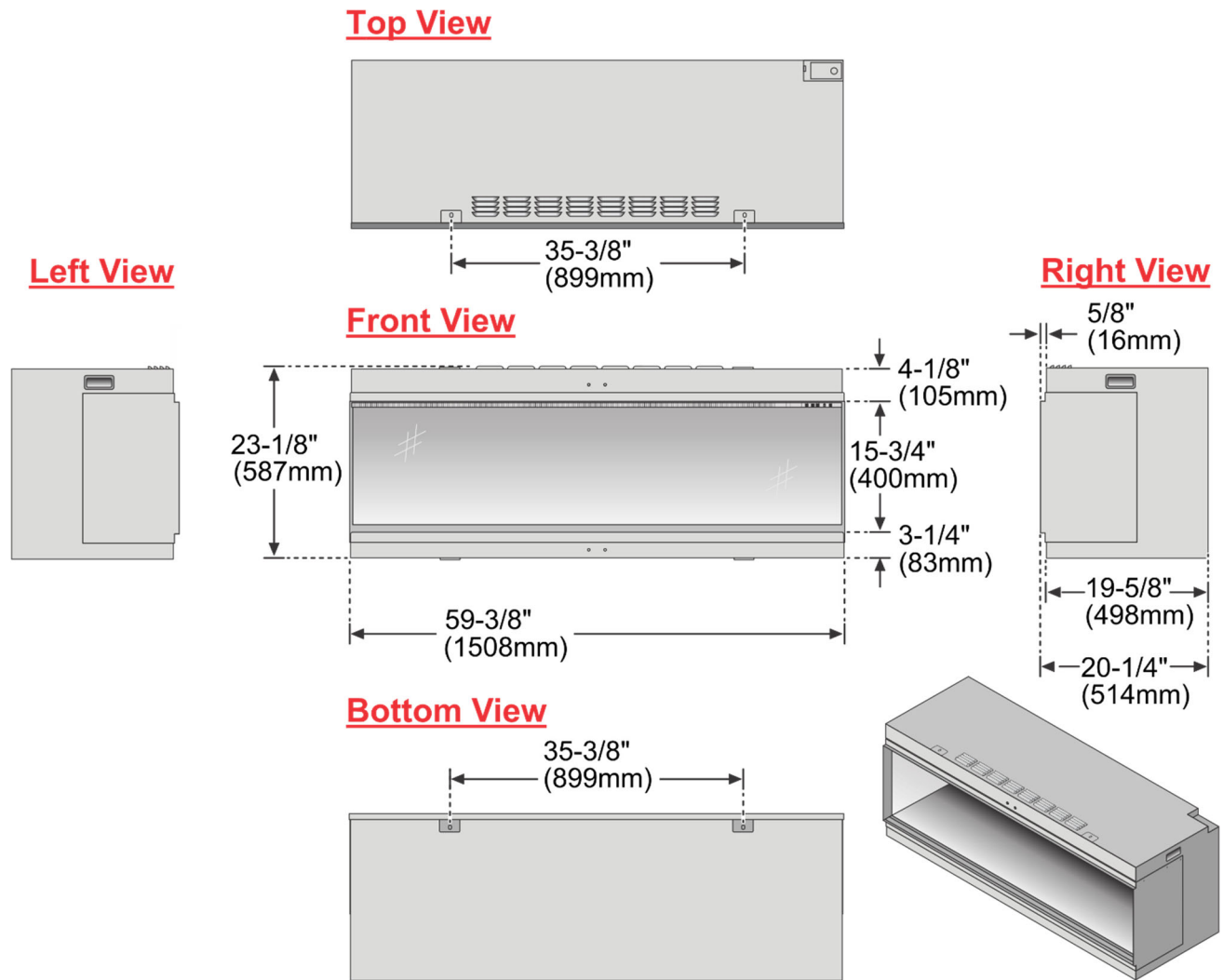
NOTE: If using the optional LED Ambient Light Kit it **MUST BE CONNECTED AT THIS TIME**. After the fireplace is installed and finish material is applied around the appliance, the LED Ambient Light Kit cannot be added without removing the fireplace from the framed chase.

6. Install the drywall and/or facing.
7. Install the hearth (if applicable). Install the mantel (if applicable).
8. Finalize the installation (see page 28).

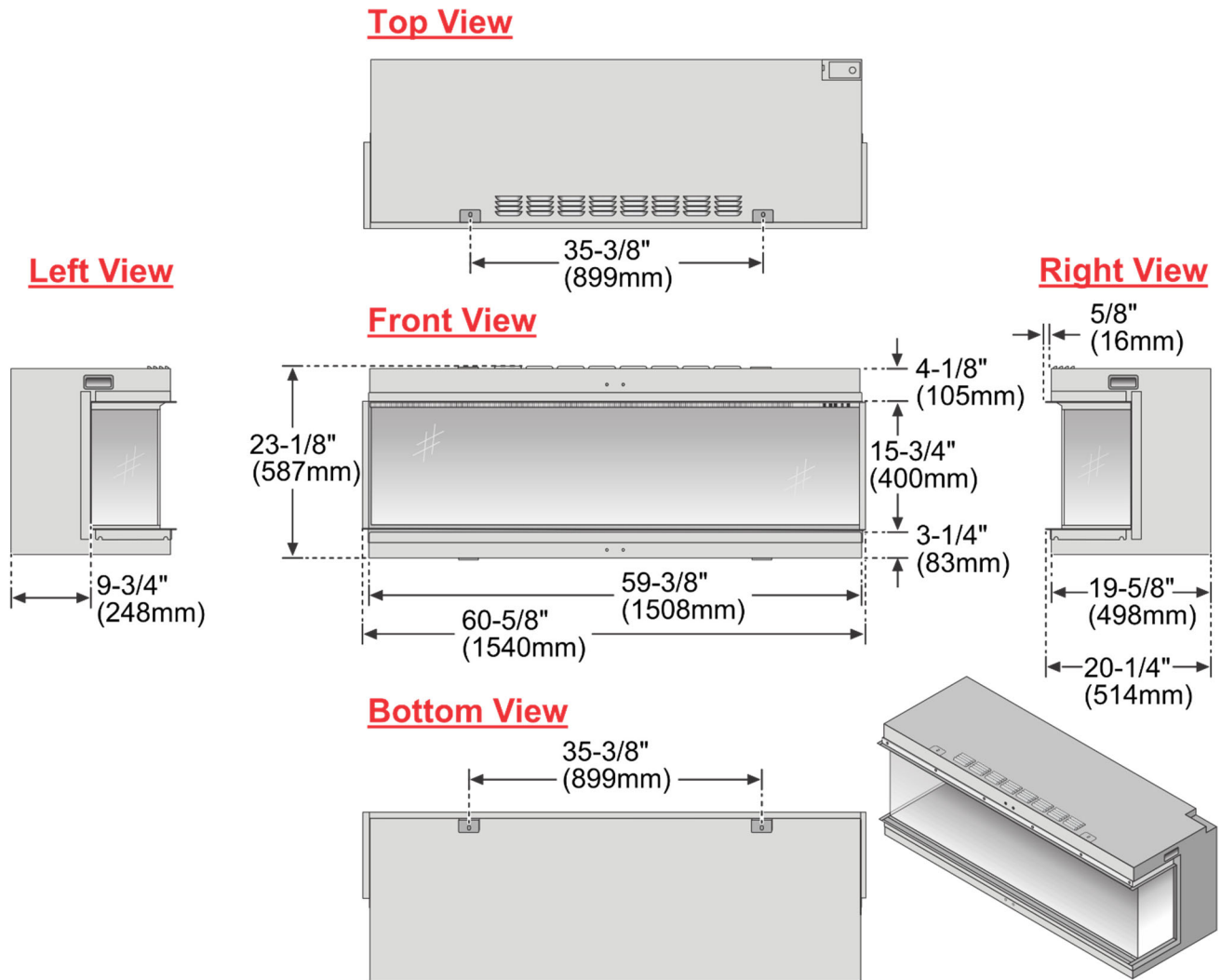
Recommended Specialty Tools

- Large Level (or Laser Level)
- Outlet tester and/or multi-meter

Dimensions - Single Sided Configurations



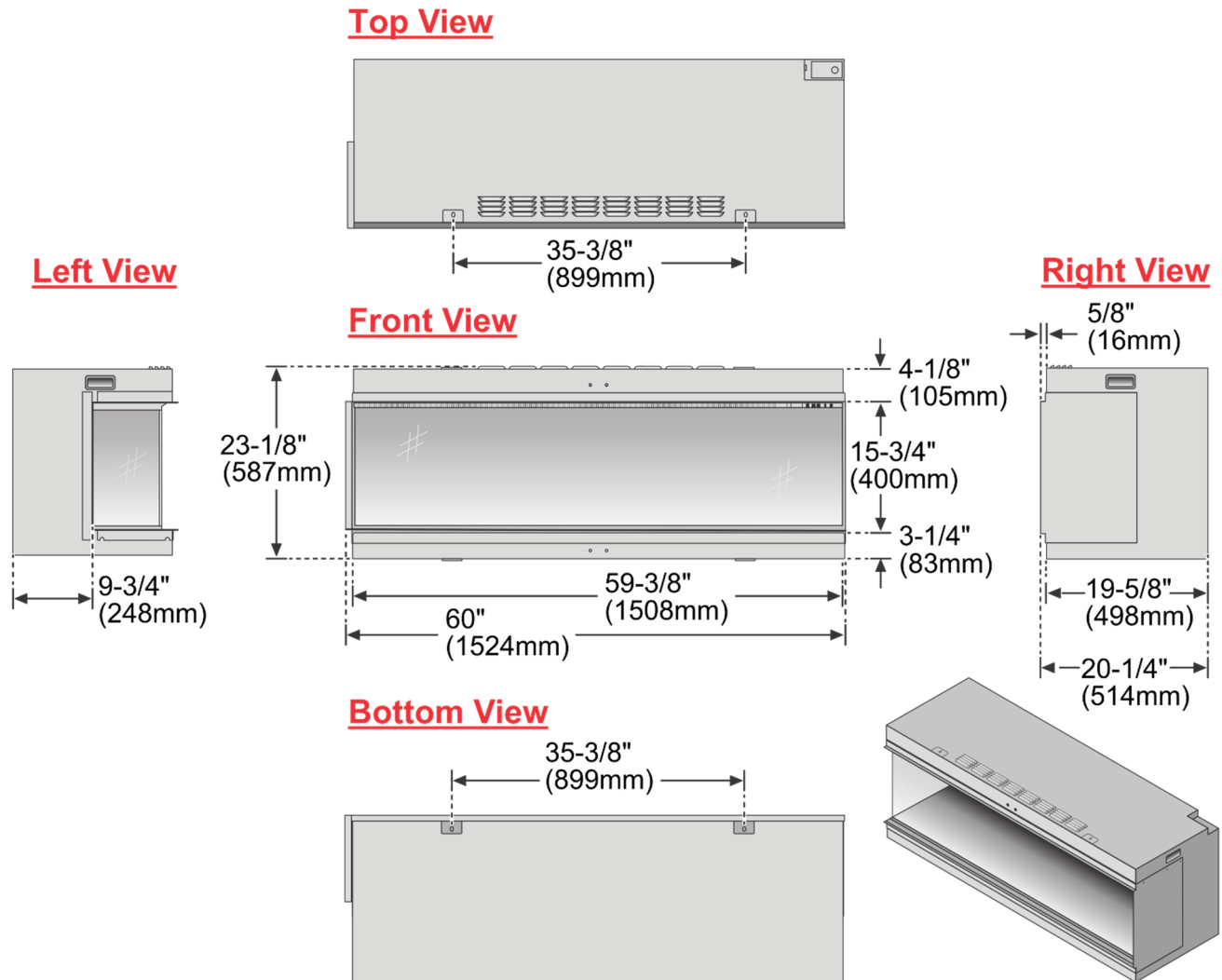
Dimensions – Bay Configuration



12

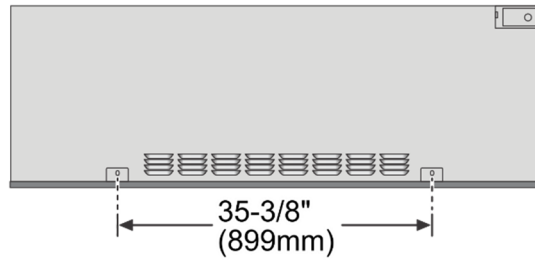
Installation (for qualified installers only)

Dimensions – Left Corner Configuration

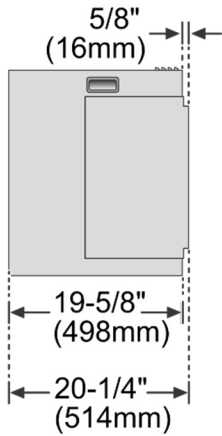


Dimensions – Right Corner Configuration

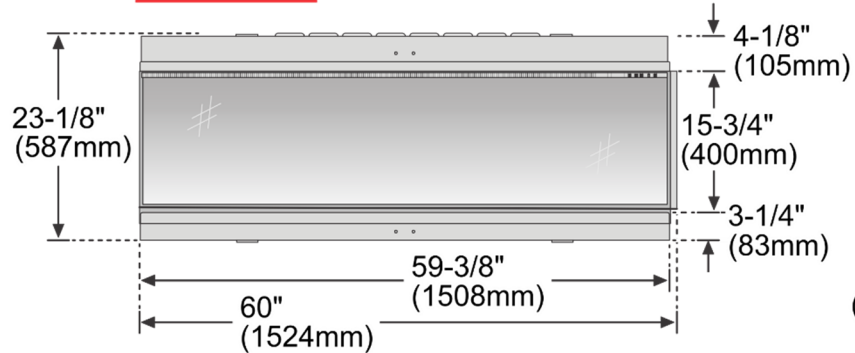
Top View



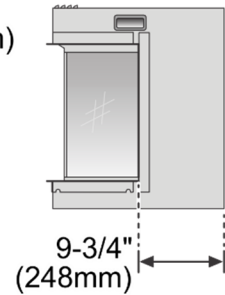
Left View



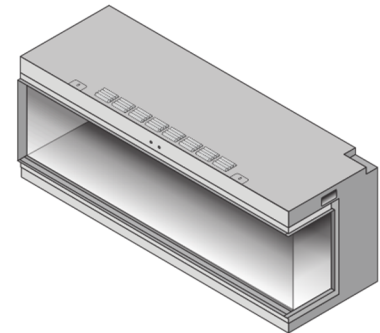
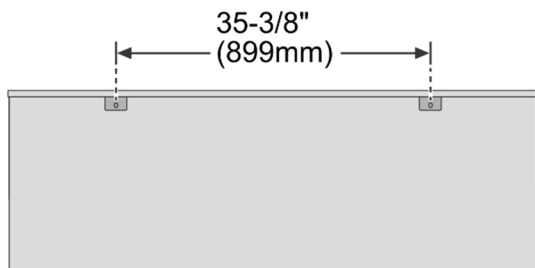
Front View

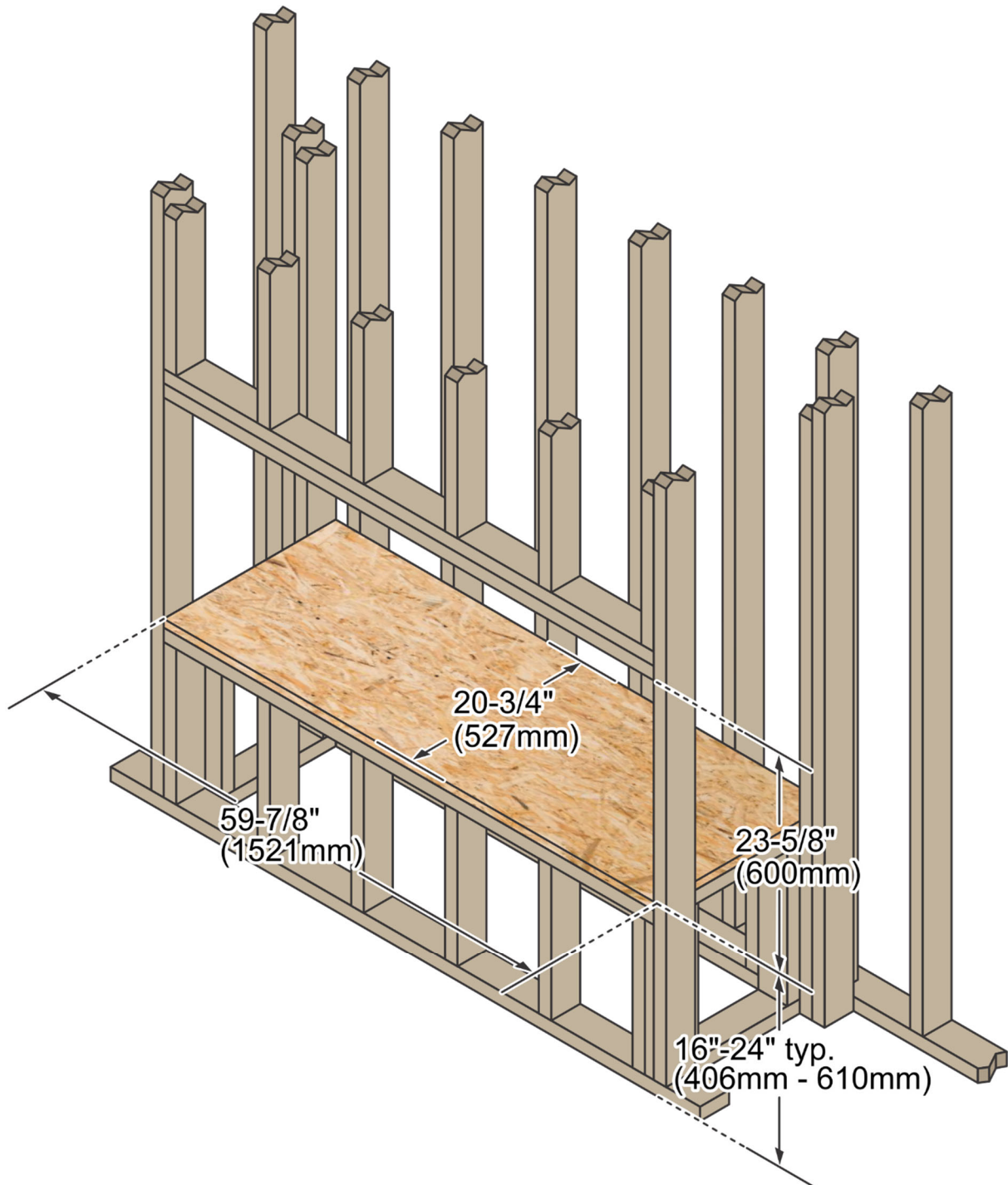


Right View



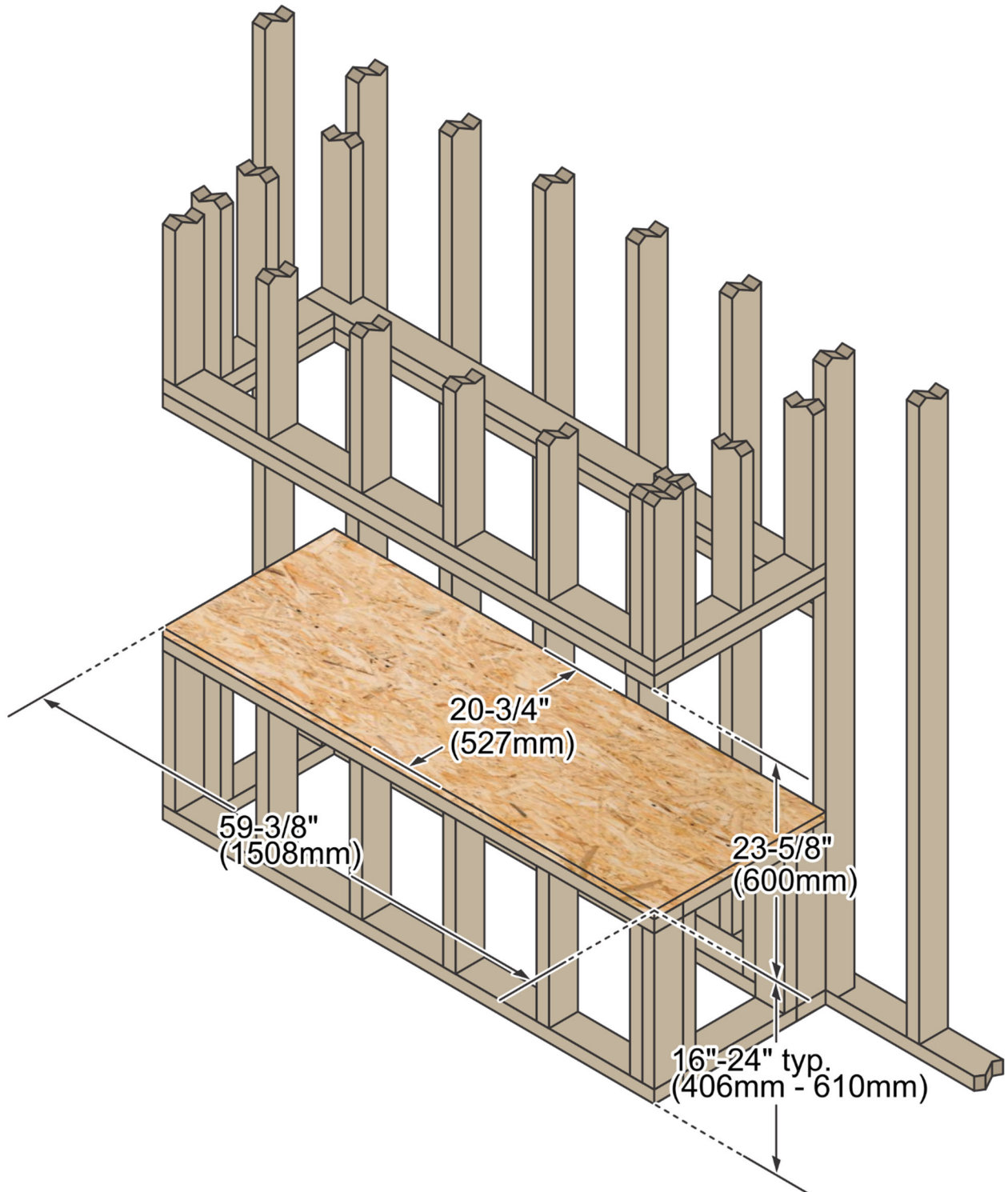
Bottom View



Minimum Framing Dimensions – Single Sided configuration**IMPORTANT**

If using the optional Ambient Light Kit it must be connected to the fireplace before covering the chase (see pg 34 for details).

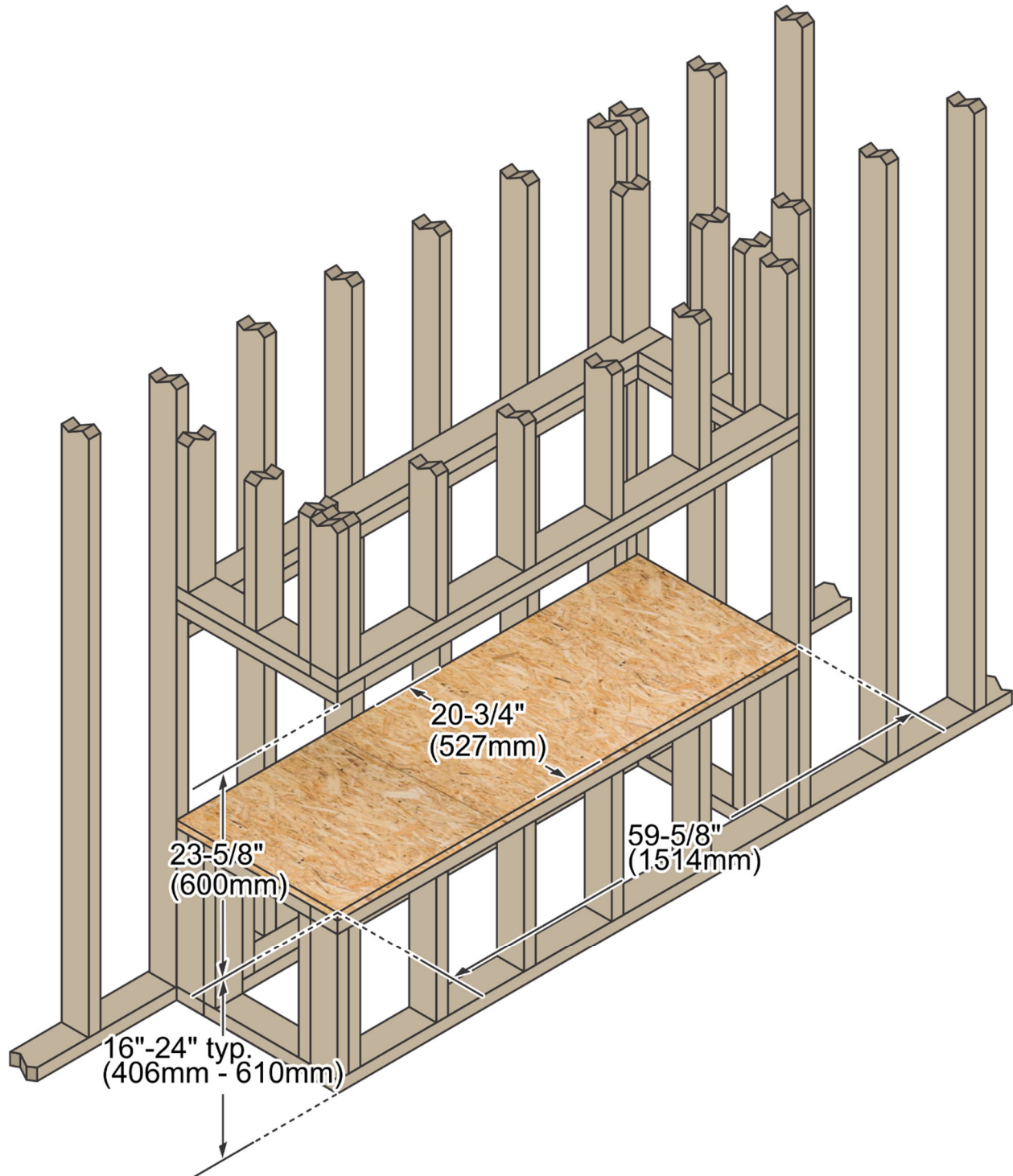
Minimum Framing Dimensions – Bay configuration



IMPORTANT

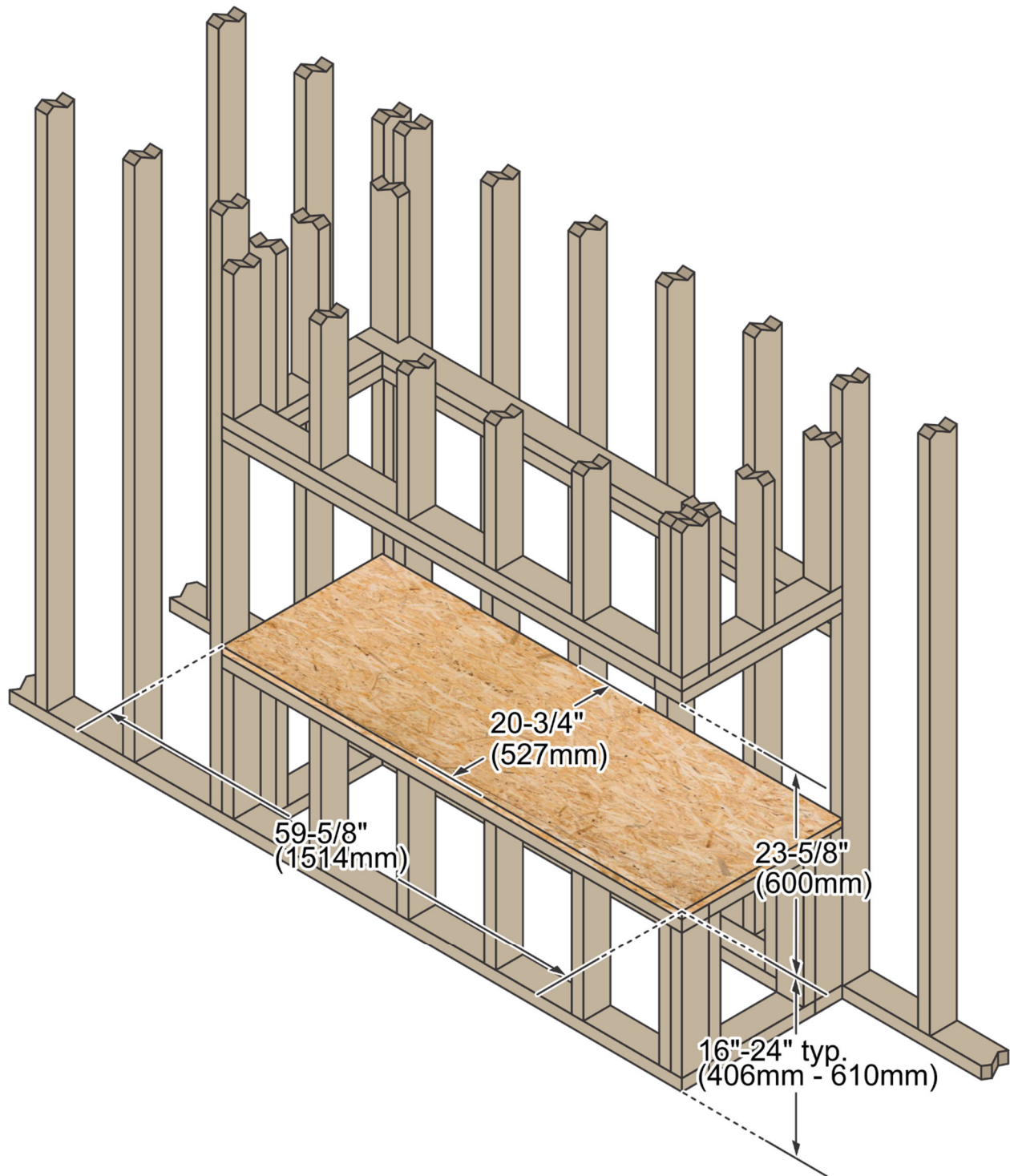


If using the optional Ambient Light Kit it must be connected to the fireplace before covering the chase (see pg 34 for details).

Minimum Framing Dimensions – Left Corner configurations**IMPORTANT**

If using the optional Ambient Light Kit it must be connected to the fireplace before covering the chase (see pg 34 for details).

Minimum Framing Dimensions – Right Corner configuration



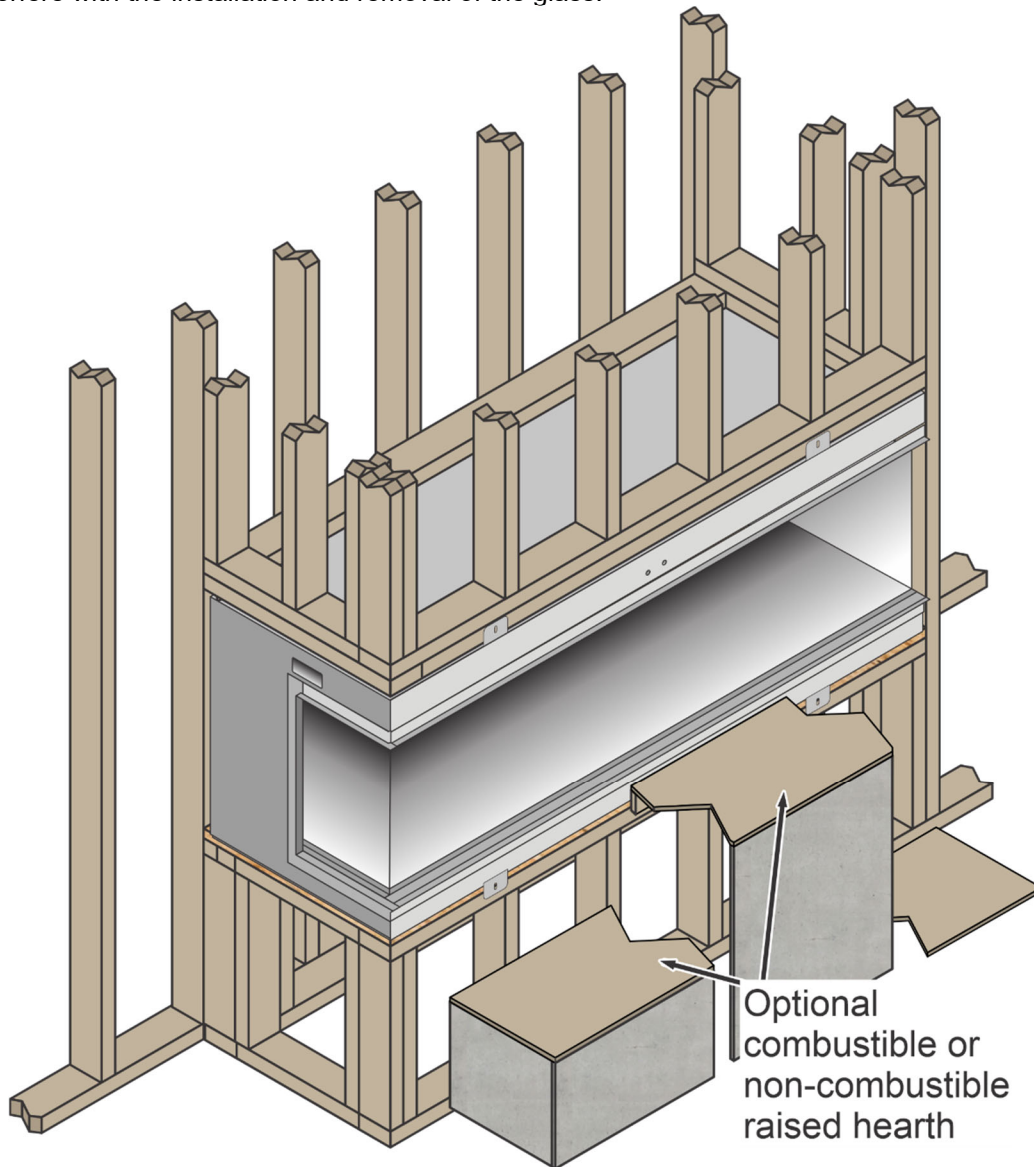
IMPORTANT



If using the optional Ambient Light Kit it must be connected to the fireplace before covering the chase (see pg 34 for details).

Hearth Requirements

A combustible or noncombustible hearth may be installed in front of the fireplace anywhere up to the edge of the fireplace opening. The hearth finish material must not extend above the fireplace opening or it will interfere with the installation and removal of the glass.



Electrical Connection

- The electrical line to the fireplace must be installed by a qualified installer and must meet all local codes.
- Make sure the household breaker is shut off prior to working on any electrical lines.
- The appliance, when installed, must be electrically grounded in accordance with local codes or, in the absence of local codes, with the National Electrical Code, ANSI/NFPA 70, or the Canadian Electrical Code, CSA C22.1.
- The electrical supply must meet the minimum requirements below:
 - **120v Installation:** 14 gauge, and supply 120 Volts, 60 Hz (typical max amps: 13).
 - **240v Installation:** 14 gauge, and supply 240 Volts, 60 Hz (typical max amps: 11.6).
- Route the electrical supply wires through the appliance cover plate and attach them to the terminal block as shown below.

CAUTION: Label all wires prior to disconnection when servicing the appliance. Wiring errors can cause improper and dangerous operation.

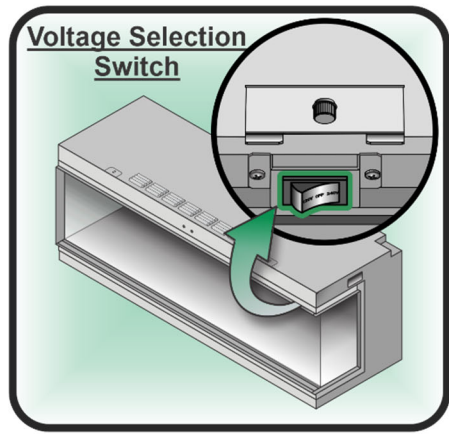
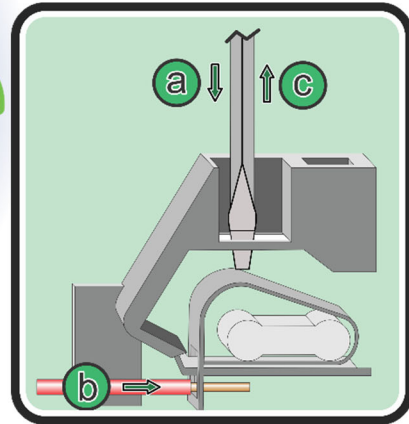
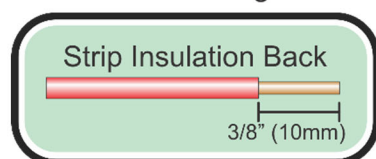
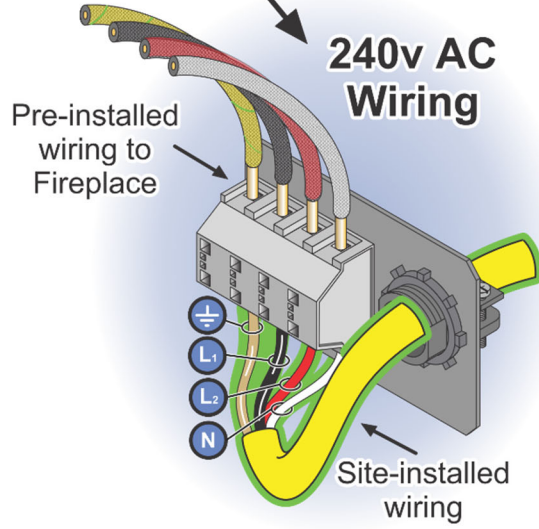
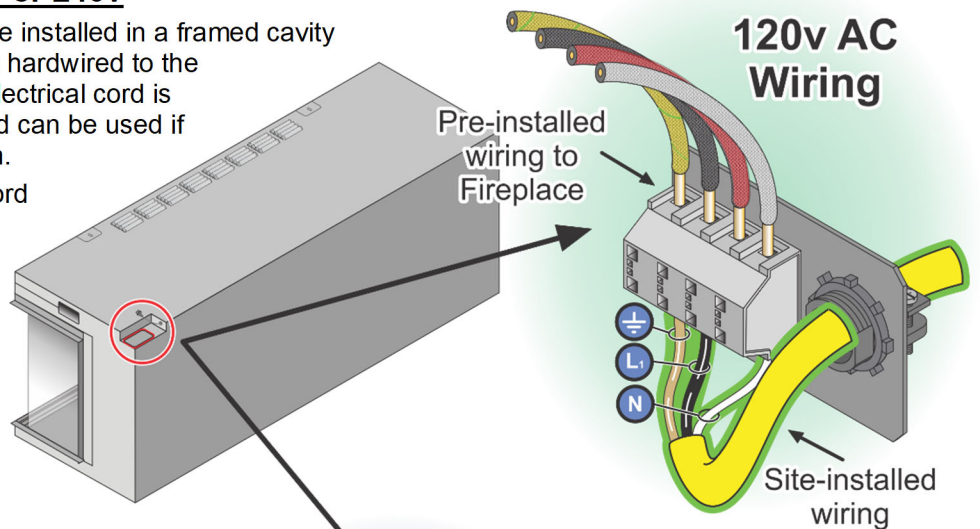
240V INSTALLATIONS ONLY

If installing using 240v, there is a switch on the right-rear corner of the firebox (behind the right glass clip and angled piece of glass) that must be switched from 120v to 240v before supplying power to the appliance.

Hardwire Installations 120v or 240v

This appliance is intended to be installed in a framed cavity with the electrical supply being hardwired to the appliance. An optional 120v electrical cord is included with the appliance and can be used if appropriate for your installation.

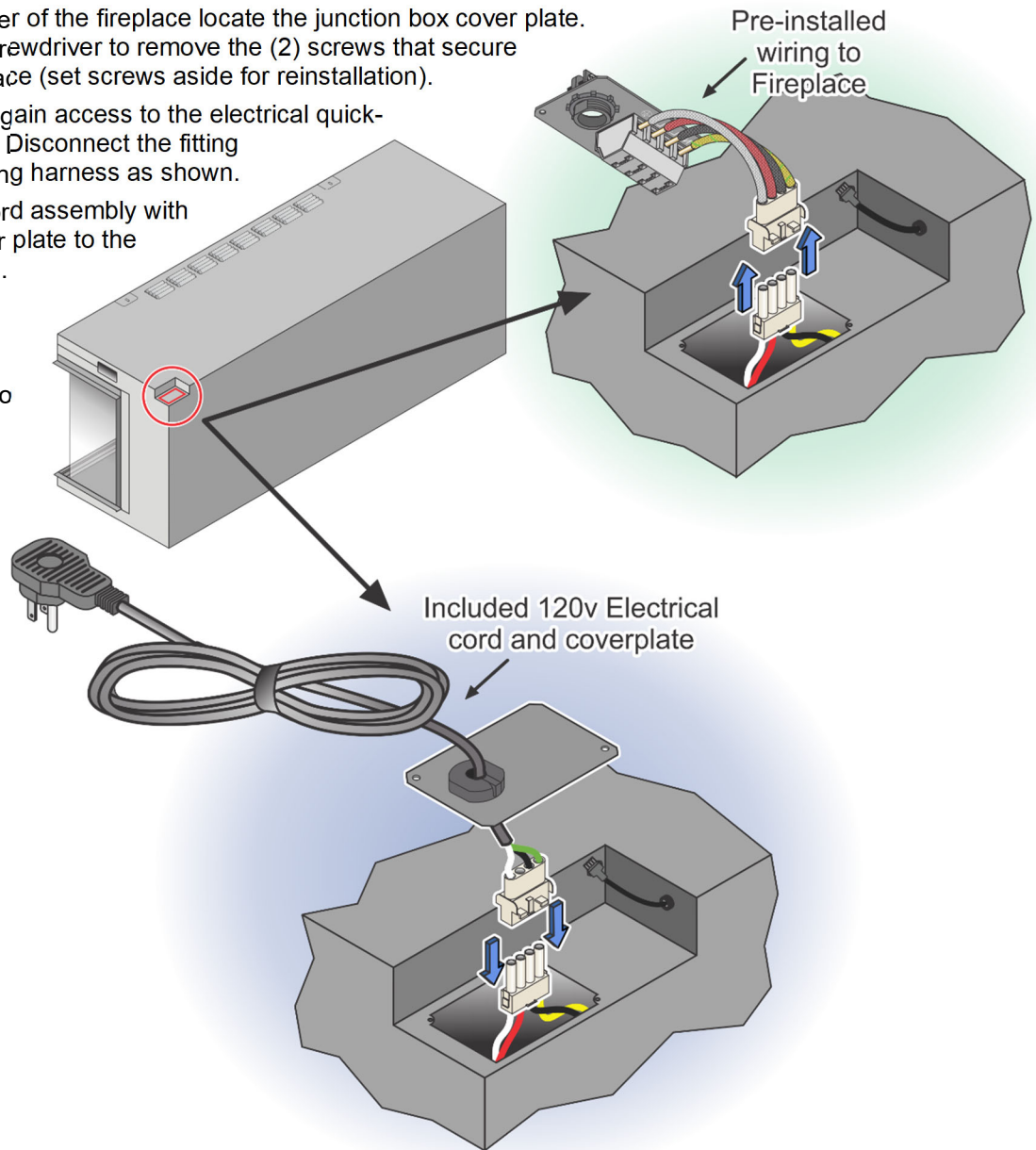
NOTE: If using the included power cord make sure that the outlet is "readily accessible", grounded, and meets all other code requirements. We recommend checking with the local authority having jurisdiction while planning the installation.



Power Cord Installations (120v Only)

To install the optional 120v cord follow the steps below

- On the right-rear corner of the fireplace locate the junction box cover plate. Use a Philips head screwdriver to remove the (2) screws that secure the cover to the fireplace (set screws aside for reinstallation).
- Gently lift the plate to gain access to the electrical quick-connect fitting below. Disconnect the fitting from the fireplace wiring harness as shown.
- Connect the power cord assembly with the replacement cover plate to the fireplace wire harness.
- Reinstall the screws removed in the first step, to secure the cover plate and cord to the fireplace.



Installation

Before installation, check that all parts are included and undamaged. If the appliance is damaged, check with the dealer before installation and operation. If the main power supply lead is damaged in any way, it must be replaced by a suitable equivalent approved by the manufacturer.

The main box contains the appliance, (2) suction cup tools, and (1) magnet tool (to remove the glass retaining bar). Packed with the appliance (behind the glass panel) are additional boxes each with a contents list printed on the outside of the box.

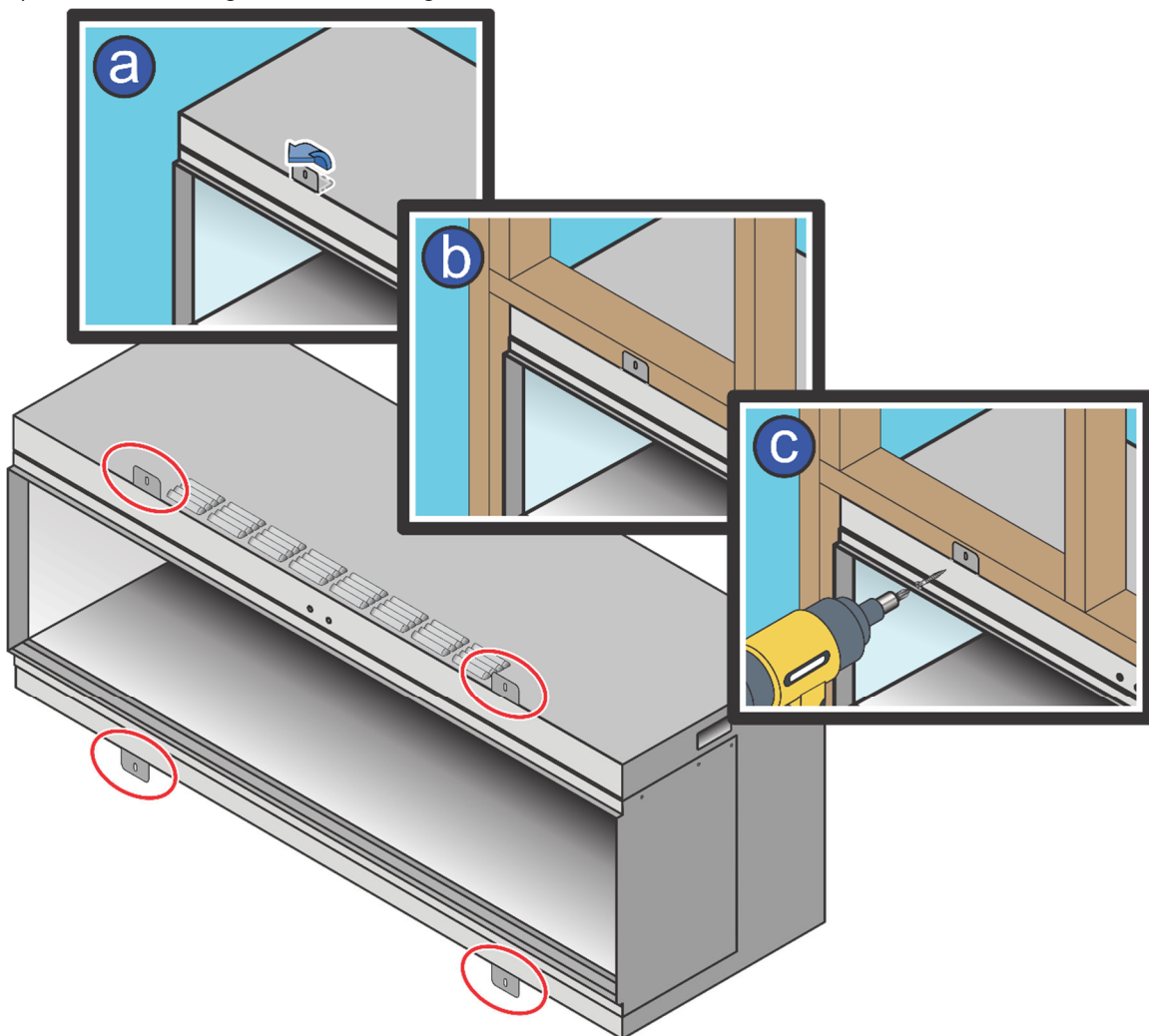
Preparing the Appliance

It is recommended that you prepare the appliance in the final place of intended installation, secured to any necessary framework. Any movement after preparation may result in the movement of the precisely arranged fuel bed elements.

Install Appliance into Framing

Follow the steps below to install the appliance into the framed cavity.

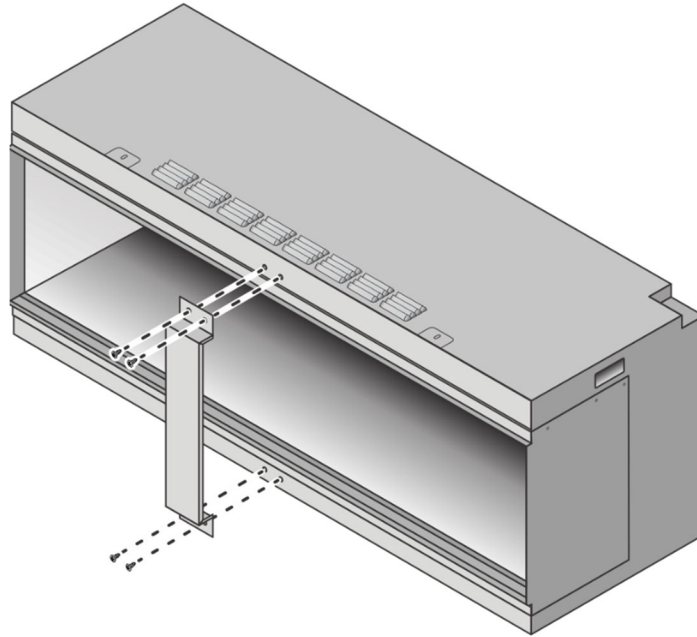
- Bend the 2 top and 2 bottom nailing flanges up perpendicular to the front of the fireplace.
- Insert the fireplace into the framing. Slide the fireplace back until the nailing flanges are pressed up against the front of the framing.
- Screw the flanges to the framing as shown below.



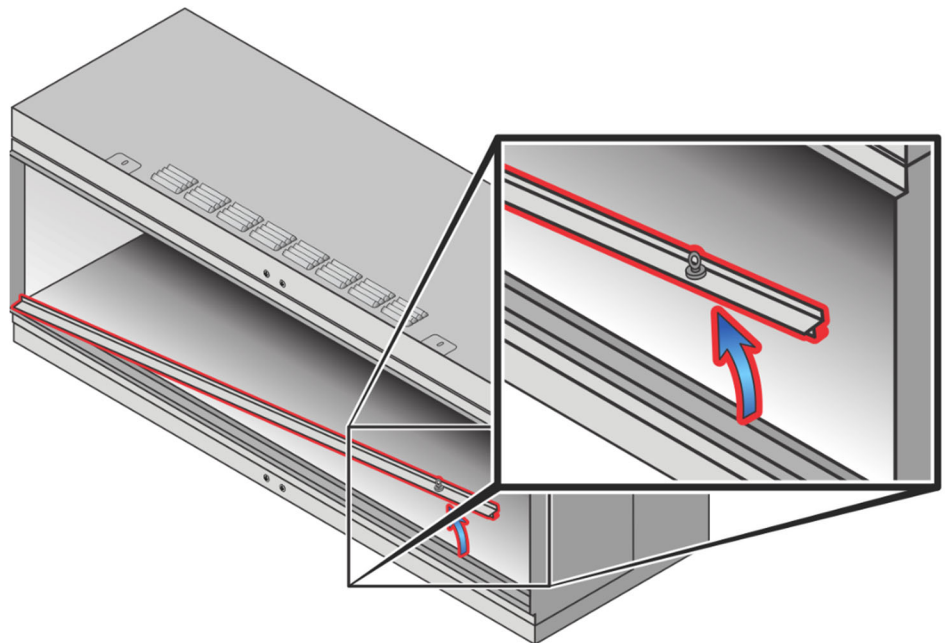
Glass Removal

To gain access to various contents required for installation, follow these steps:

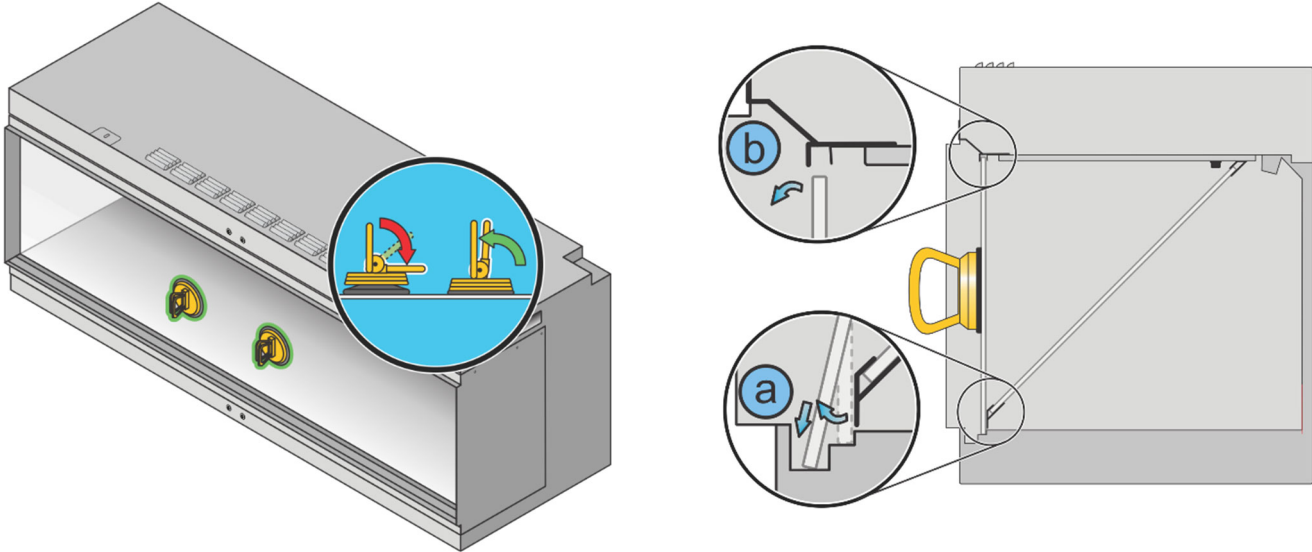
- Remove the shipping bracket from the front of the appliance. Reinstall the shipping bracket screws to the appliance and discard the shipping bracket.



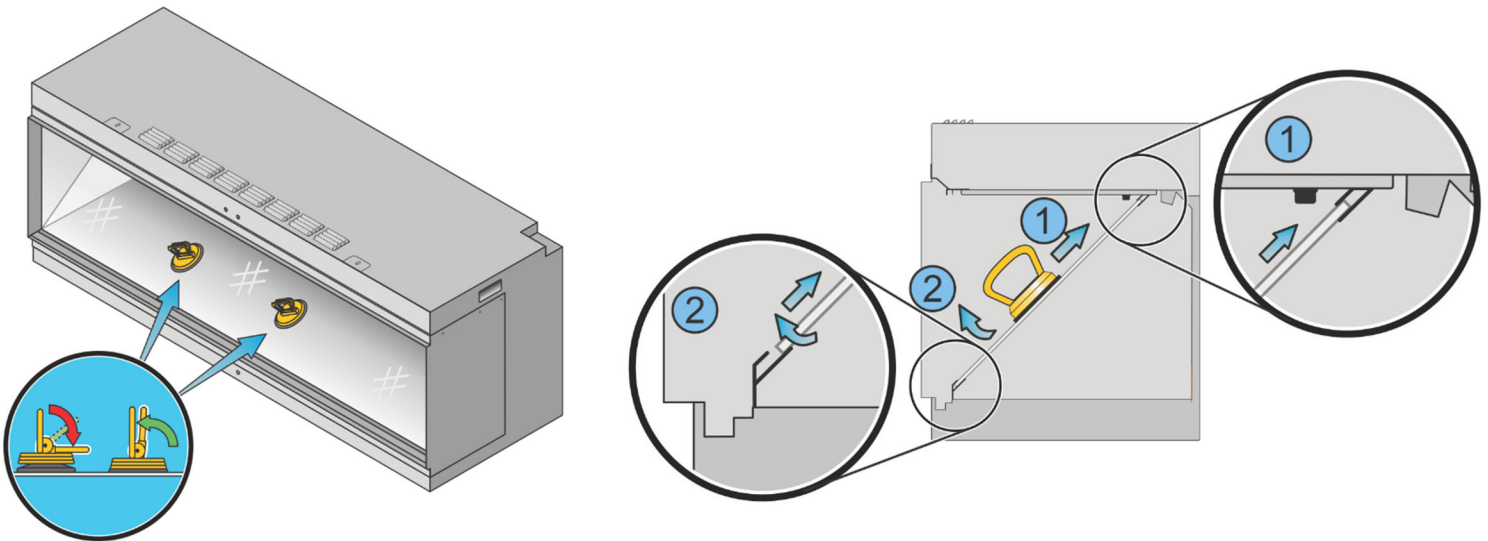
- Using the magnetic tool, lift and remove the glass retaining bar located in front of the glass panel.



- Use the 2 suction cup tools provided to remove the front glass panel. With the suction cups gently pressed against the glass panel, pivot the hinged handle to affix the suction cup to the glass. Repeat with the second suction cup. Gently move the bottom of the glass towards you until the bottom edge can be lowered into the channel exposed in the previous step. Angle the top edge of the glass away from the appliance and lift the glass panel out. Place the glass aside in a safe location for reinstallation.



- To remove the angled glass panel, locate the two steel plate brackets that are secured using a thumbscrew, one at each top corner of the glass. Turn the thumb screws counterclockwise and remove the brackets. Use the suction cup tools in the same manner as the front glass to lift the glass upwards, then carefully guide the bottom edge upwards and out of the appliance. Place the glass aside for reinstallation.



The component boxes and cardboard inserts can now be safely removed from the appliance. Take care not to damage the LCD screen in the ceiling of the appliance when removing the items.

IMPORTANT: When replacing the angled glass panel, the correct surface must be facing upwards. See the stickers on the glass panel for guidance. Replace the glass in the reverse order to initial removal, ensuring that both steel plate brackets are fitted and secured using the thumbscrews.

Fireplace Configurations

The appliance can be installed in one of (4) different configurations:

- Single Sided (1 front glass panel) (stock)
- Bay (1 front glass panel, 1 right side glass panel, and 1 left side glass panel)
- Left Corner (1 front glass panel and 1 left side glass panel)
- Right Corner (1 front glass panel and 1 right side glass panel)

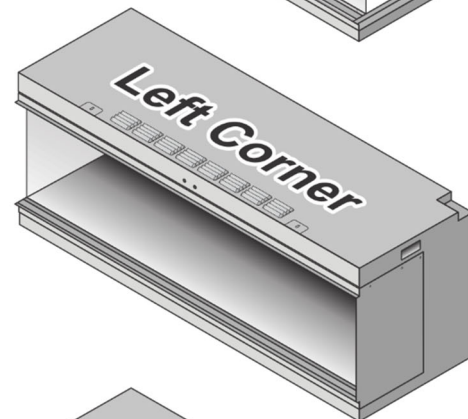
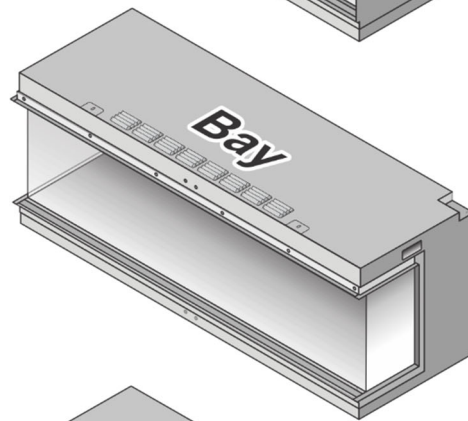
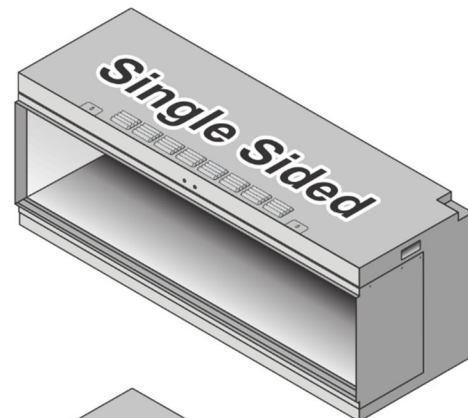
The fireplace comes stock in the single sided configuration. All other configurations must be done at the time of installation.

Single Sided Configuration

Your appliance will arrive in a single sided configuration with metal side panels already fitted.

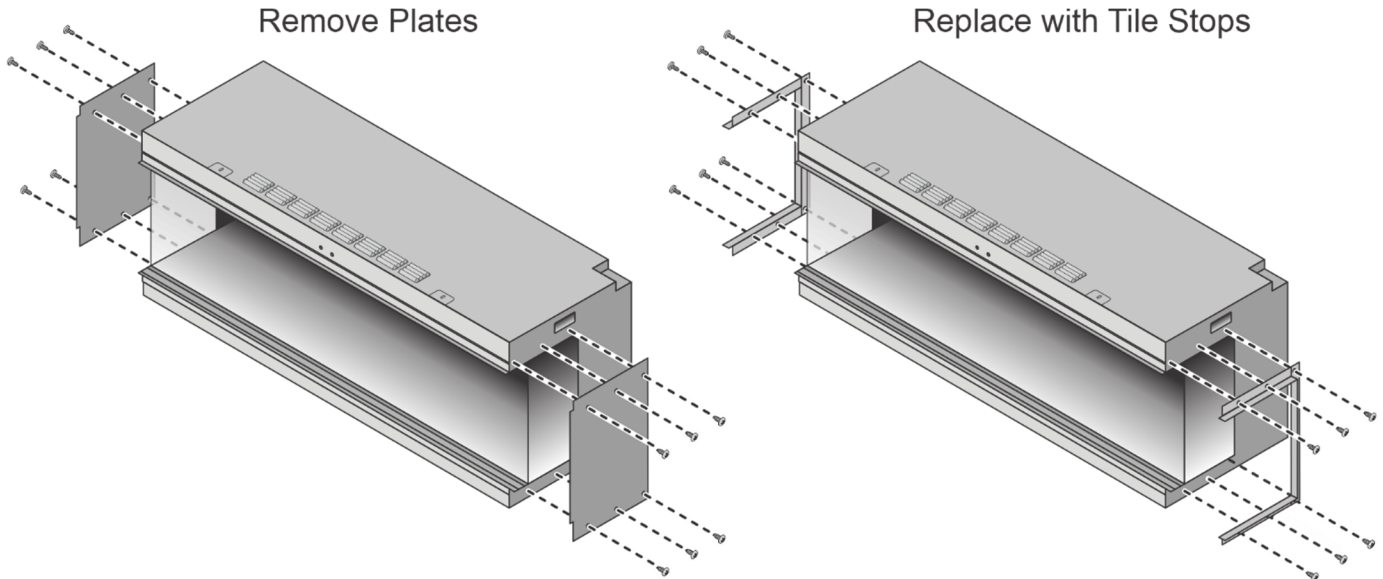
Left or Right Corner Configuration

For a **corner** installation, choose which side you want to feature a glass panel and remove the 6 screws that secure the metal side panel to the appliance. Carefully remove the panel and keep the screws for reinstallation. Using the removed screws, install **(2) of the top/bottom** tile stops and **(1) side tile stop** and screw them to the appliance (see "Bay Configuration" illustration on the following page).



Bay Configuration

For a bay configuration, repeat the corner configuration steps on the opposite end of the appliance (see below).



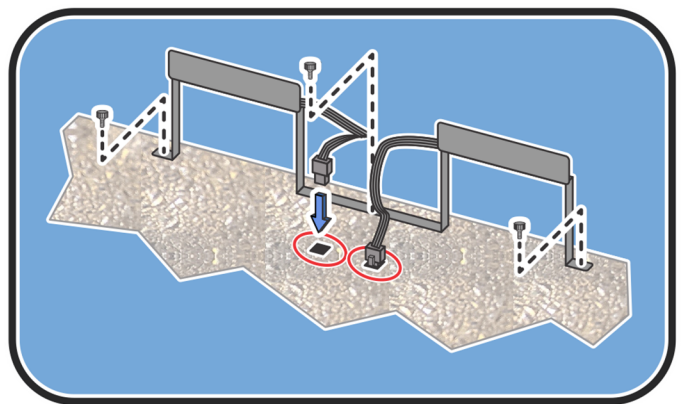
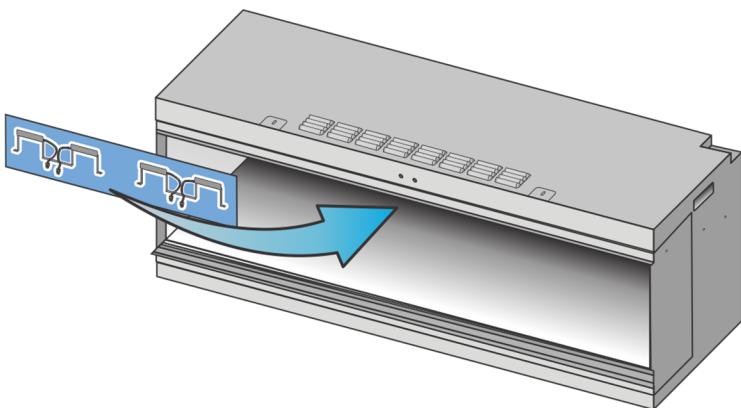
Fuel Bed Uplights

With the front glass panel and angled glass panel removed from the appliance, take the (2) Fuel Bed Uplights and secure them in place on the fuel bed using the thumbscrews provided.

NOTE: The thumbscrews are shipped preinstalled in the firebox. Remove them before installing the upright assemblies.

Near the middle of each upright assembly, there are (2) electrical ports in the fuel bed. Connect the electrical leads from the assemblies to their respective ports as shown below.

NOTE: The clip on the electrical connector should be oriented toward the front of the fireplace when oriented properly.



Facing & Mantel Requirements

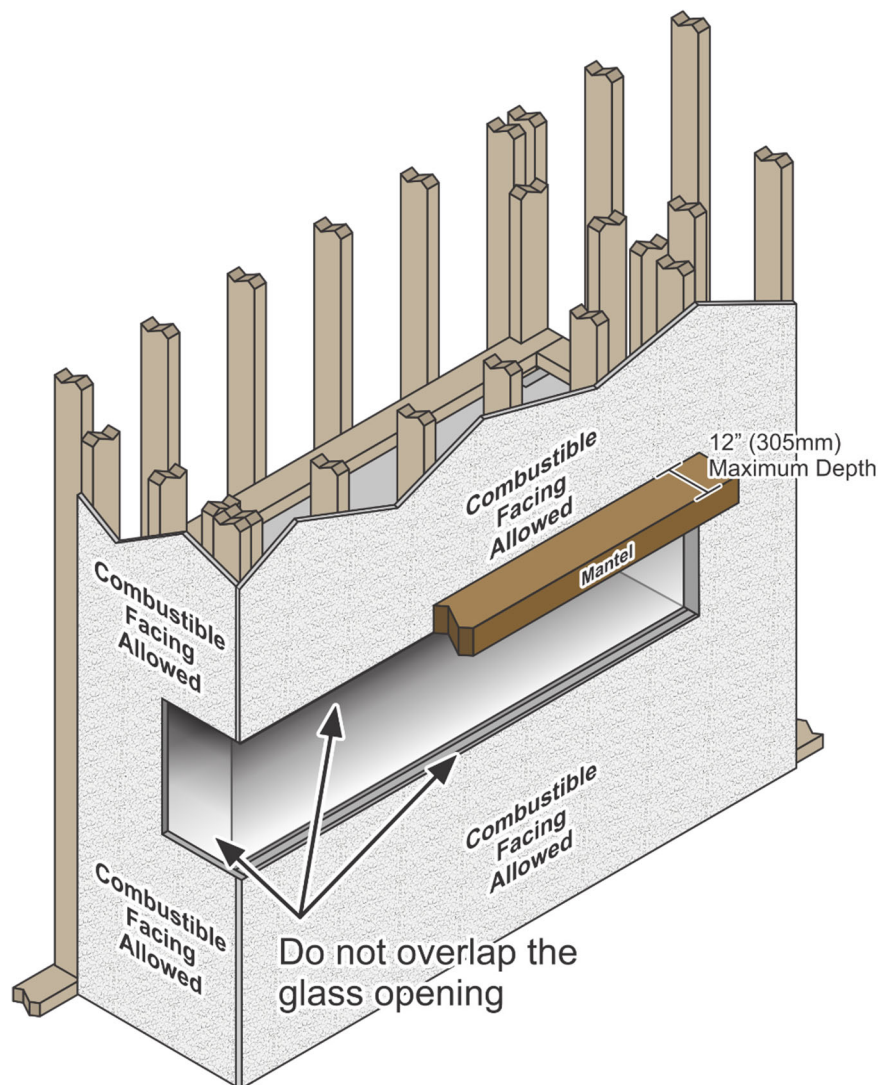
Facing Requirements

- Drywall, tile, or other facing (combustible or non-combustible) may be placed directly on the face of the fireplace (see below).
- Facing may be placed along the perimeter of the glass opening but must not extend over it. This area must remain open to allow for glass removal and installation.
- The fireplace must not be used to support the facing. Facing must be self-supporting.
- Do not penetrate the fireplace with any fasteners.



WARNING

Do not use adhesive to secure the facing. The temperatures of the fireplace may cause adhesives to emit odors.



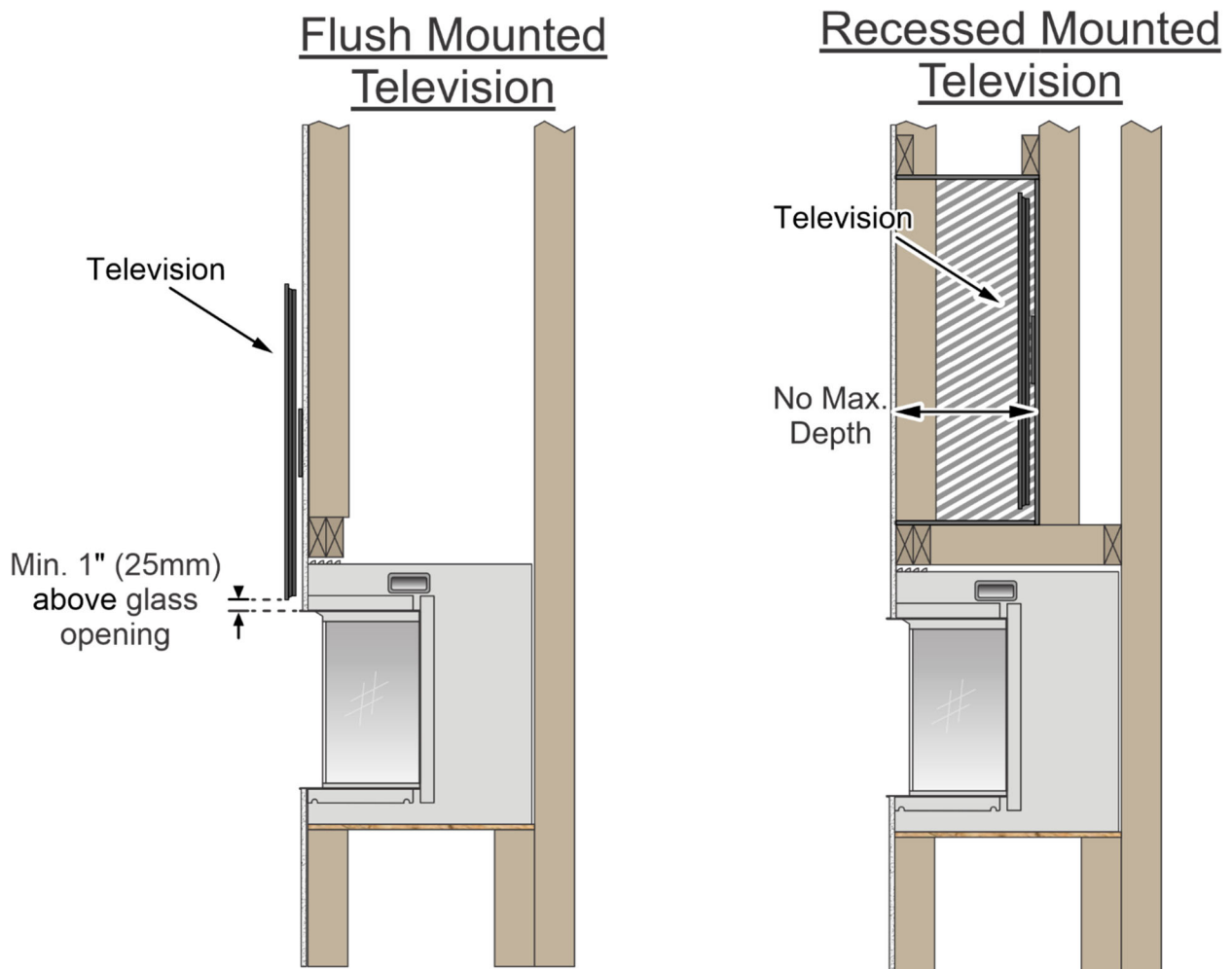
Mantel Requirements

- A mantel (combustible or non-combustible) may be installed above the fireplace. Make sure it does not overlap the glass opening.
- The maximum mantel depth is 12" (305mm).

TV Installations above the Fireplace

When installing a fireplace above this fireplace we recommend following the guidelines below.

- If a TV is flush mounted, we recommend that the bottom of the TV be installed a minimum of 1" (25mm) above the glass opening of the fireplace.
- If the TV is installed in a cavity above the fireplace, we recommend that the fireplace be installed with a minimum 1" (25mm) gap at the bottom of the TV, a 1" (25mm) gap at the top of the TV, and the TV installed with a minimum 1" gap between the back of the TV and the rear wall of the recessed cavity.
- There is no maximum depth for a recessed TV installation.
- Check with the manufacturer of the Television for any additional installation requirements when their product is installed in proximity to a heat source.



Log and Media Installation

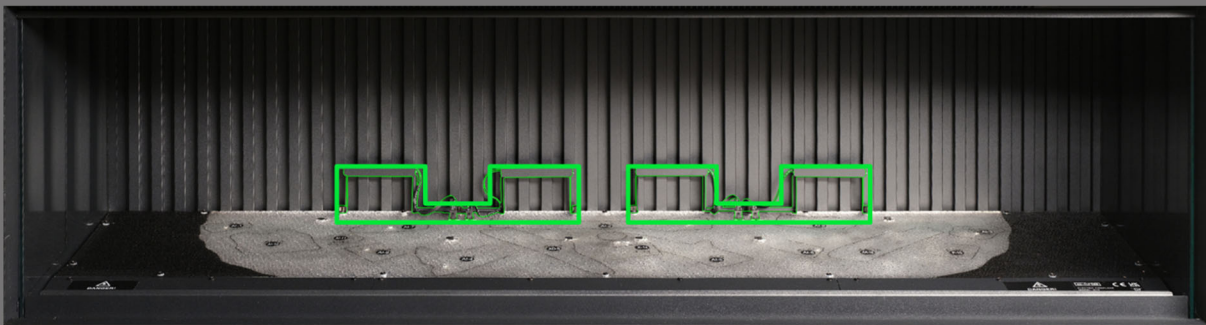
IMPORTANT: The logs and other fuel elements provided with the appliance must be installed in the exact locations and positions described in the steps below. Failure to install the logs correctly will result in an incorrect flame appearance.

All logs and fuel elements are marked with an individual code. The fuel bed is also marked with the same corresponding code and accompanying stenciled outline. Most of the logs feature a small peg on the underside that will slot into a corresponding hole on the fuel bed.

(6) of the logs feature internal LED illumination. These need to be plugged into ports located on the fuel bed. **Take care not to damage the connector pins at this point as it may result in malfunction.**



Follow the sequence steps detailed below. For further assistance, scan the QR code to access a video guide.



Step 1: Ensure that both fuel bed up-light assemblies are installed and connected properly. Use the thumbscrews provided to secure the lights, and ensure the cables are plugged into the ports on the fuel bed.



Step 2: Position log AI-2 onto the corresponding outline on the fuel bed, locating the peg on the underside of the log into the hole in the fuel bed.



Step 3: Position log AI-7 onto the corresponding outline on the fuel bed, locating the peg on the underside of the log into the hole in the fuel bed.



Step 4: Position log AI-8 onto the corresponding outline on the fuel bed, locating the peg on the underside of the log into the hole in the fuel bed.



Step 5: Position log AI-1 onto the corresponding outline on the fuel bed, locating the peg on the underside of the log into the hole in the fuel bed, and plug the cable into the port on the fuel bed.



Step 6: Position log AI-3 onto the corresponding outline on the fuel bed, locating the peg on the underside of the log into the hole in the fuel bed, and plug the cable into the port on the fuel bed.



Step 7: Position log AI-9 onto the corresponding outline on the fuel bed, locating the peg on the underside of the log into the hole in the fuel bed, and plug the cable into the port on the fuel bed.



Step 8: Position log AI-10 onto the corresponding outline on the fuel bed.



Step 9: Position log AI-11 onto the corresponding outline on the fuel bed.



Step 10: Position log AI-6 onto the corresponding outline on the fuel bed, locating the peg on the underside of the log into the hole in the fuel bed, and plug the cable into the connector on the fuel bed.



Step 11: Position log AA-16 onto the corresponding outline on the fuel bed.



Step 12: Position log P-10 onto the corresponding outline on the fuel bed.



Step 13: Position log AI-4 onto the corresponding outline on the fuel bed, locating the peg on the underside of the log into the hole in the fuel bed, and plug the cable into the port on the fuel bed.



Step 14: Position log AI-5 onto the corresponding outline on the fuel bed and plug the cable into the port on the fuel bed.



Step 15: Position log AD-8 onto the corresponding outline on the fuel bed.



Step 16: Position log X-14 onto the corresponding outline on the fuel bed.



Step 17: Distribute the clear resin embers around the base of the logs, placing them on the clear area of the fuel bed. Ensure good coverage, including areas underneath the raised logs.



Step 18: Distribute the black resin embers around the base of the logs, placing them on the black area of the fuel bed. Ensure good coverage.



Step 19: Distribute the black glass embers around the entire fuel bed, placing them over both clear and black resin embers. Do not feel that you need to use all of the black glass embers provided.



Step 20: At this stage it may be helpful to turn on the appliance to illuminate the fuel bed and review the coverage of embers.



Step 21: Take the remaining small logs and bark pieces and arrange them randomly around the fuel bed, Pressing them down into the embers. The small pieces of bark can be used to conceal any visible wires.



Step 22: Distribute the grey and black slate chips around the fuel bed. Finally, re-fit the flame screen (angled glass) ensuring the correct surface is forward and check for proper alignment of flames on the logs.

IMPORTANT: The logs and other fuel elements provided with the appliance must be installed in the exact locations and positions described in these steps. Failure to install the logs correctly will result in an incorrect flame effect.

NOTE: When the appliance is turned on for the first time, the fuel bed will flash orange for a short time. This indicates that the appliance is warming up. The flashing will cease after approximately 10 seconds and the flame effect will activate.

Complete the setup by carefully re-fitting the front glass using the suction cup tools provided, then re-fit the glass retaining bar following the steps detailed in the section “Glass Removal” in reverse.

Optional Equipment

Ambient Light Kit (Optional) SKU: 94400151

There is an optional LED ambient light kit available for this fireplace. The ambient light kit can be used to provide accent lighting to features around the fireplace such as the mantel or hearth. This kit uses power supplied by the fireplace and is operated using the same controls as the fireplace.



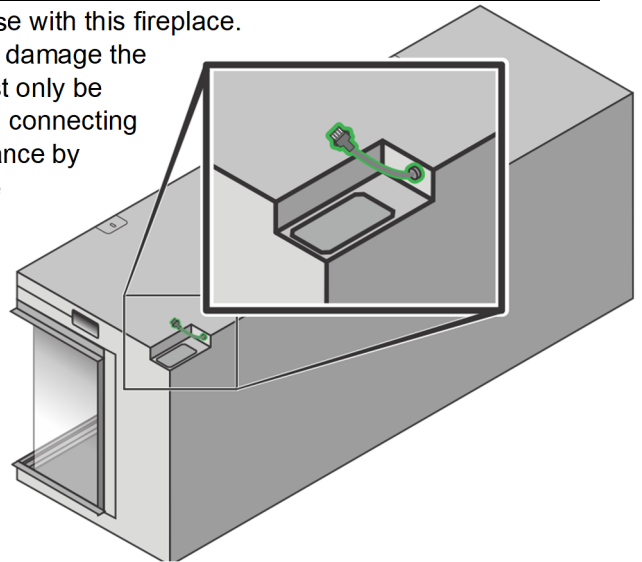
IMPORTANT NOTE



If you would like to use the Ambient Light Kit, the electrical connection to the fireplace **MUST be made before installing the fireplace into the framed cavity or adding sheeting and/or finish material to the fireplace enclosure. The Ambient Light Kit is not a retrofit option as the electrical connection on the appliance is not accessible after the appliance is installed.**

Only use the Ambient Light Kit provided by Travis Industries for use with this fireplace. Other, non-approved LED light kits must not be used as they may damage the appliance and invalidate the warranty. The Ambient Light Kit must only be used when connected directly to the appliance using the pre-fitted connecting adaptor (this can be found at the top right-hand corner of the appliance by the main electrical connection). The Ambient Light Kit must not be adapted to be operated independently of the appliance, such as modifying it to run on an independent power supply.

The Ambient Light Kit is supplied as (2) 59" long LED strips with adhesive tape backing, (2) 78" extension cables (not illuminated), and (1) 2-way splitter which may be used to attach two separate kits to the same appliance, allowing each kit to be routed to different directions/locations.



IMPORTANT: A maximum length of 118" of LED strip may be used on this appliance. This may be a single strip of 118", or two strips of 59", the included extensions, and a 2-way splitter.

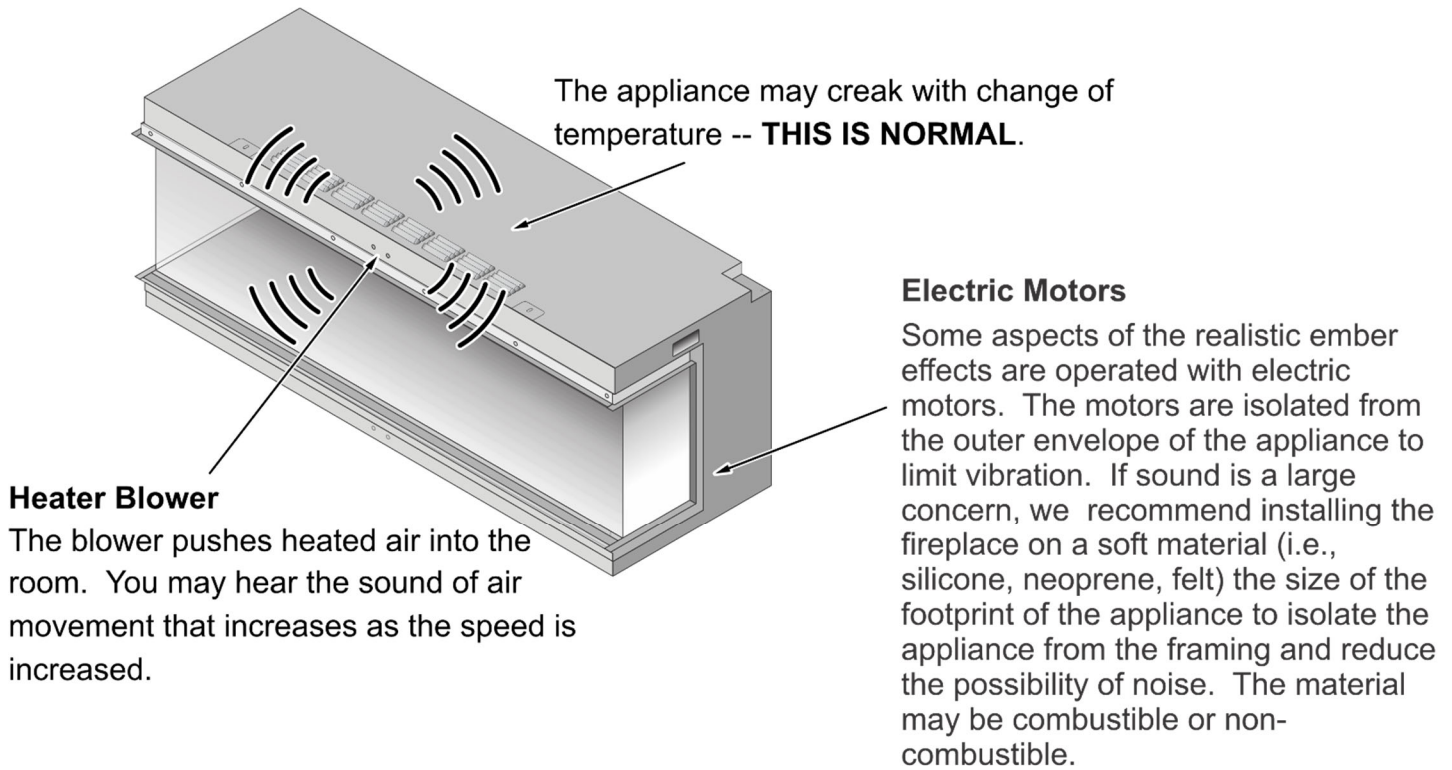
Typical Order of Installation

The kit should be connected when the appliance is placed into the framed cavity. The appliance would then be fixed to the framing at that point, ready for the sheeting and finish material to be completed around the appliance. The LED strip can then be routed to its desired location (i.e., under the mantel or along the sides of the chase). Take care not to damage the strip or cable during this process. Damage can occur if the strip or cable is stretched or snagged on part of the structure/installation. If the cable is damaged at the point of the appliance, it may need to be replaced and this would not fall within the scope of the warranty. It is best practice to test that the Ambient Light Kit is working correctly before the final sheeting and finish has been installed over the framing. Once you are satisfied that the lighting is working correctly with the remote control, the sheeting can be installed, and the finish material applied.

Before You Begin

- Read this entire manual before you use your new heater (especially the section "Safety Precautions" on pages 4 & 5).

Normal Operating Sounds



Heater Blower

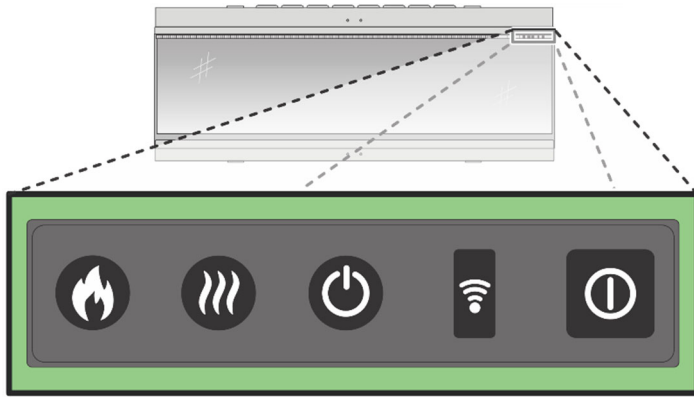
The blower pushes heated air into the room. You may hear the sound of air movement that increases as the speed is increased.

Electric Motors

Some aspects of the realistic ember effects are operated with electric motors. The motors are isolated from the outer envelope of the appliance to limit vibration. If sound is a large concern, we recommend installing the fireplace on a soft material (i.e., silicone, neoprene, felt) the size of the footprint of the appliance to isolate the appliance from the framing and reduce the possibility of noise. The material may be combustible or non-combustible.

Location of Controls

There are multiple ways to control your new fireplace (see the following pages for details):



Manual Controls

Located in the upper right corner of the fireplace, above the glass.

Remote Control

The remote is included with the appliance

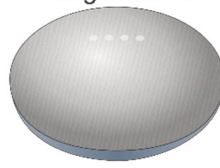


Works With

Alexa



Google Home

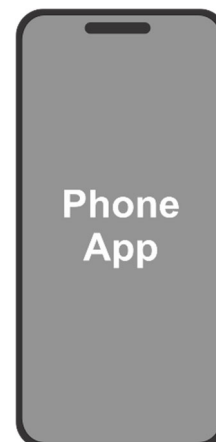


Digital Assistants

Works with Alexa™ and Google Home™
(Not included)

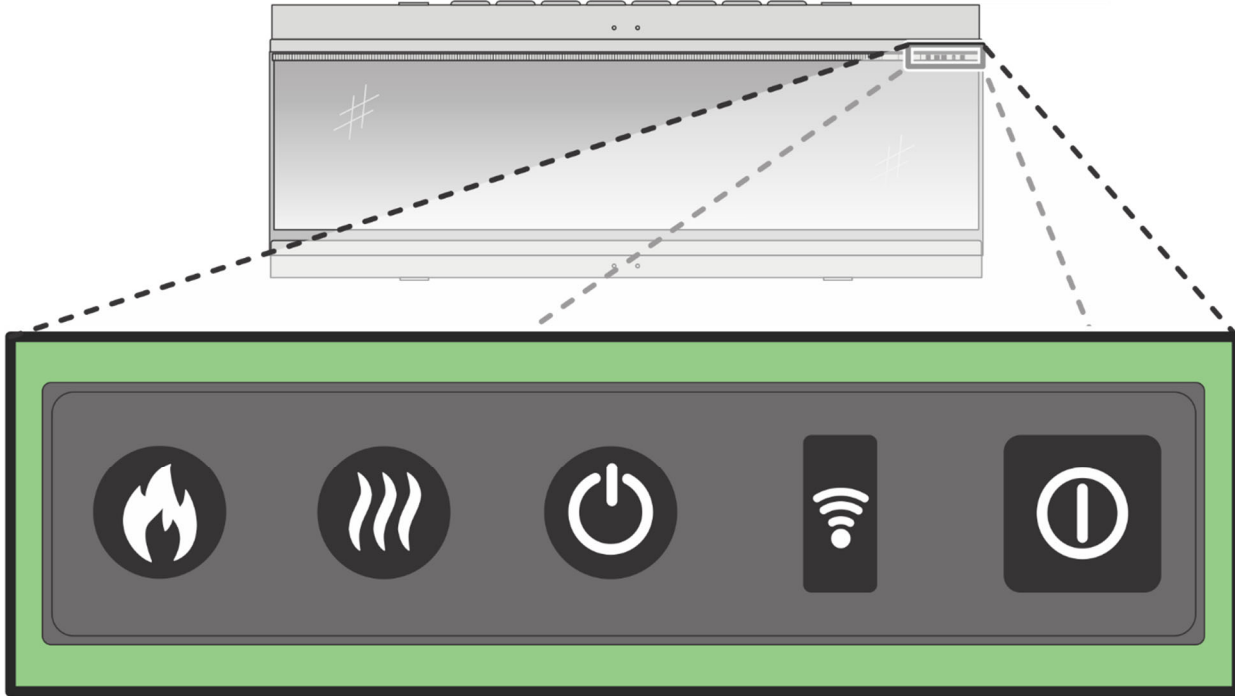
Smart Home App

Works with Apple™ and Android™



Manual Control Operation

The manual control buttons can be located on the right side of the heater outlet.



NOTE: Each time a button is pressed on the appliance, remote control, or app, an audible beep is emitted. To turn off this feature hold your finger on the Preset Mode button (on the appliance) for 3 seconds.

On/Off 

Press to turn on the power to the appliance. The button pushed in indicates power is on, and pushed out indicates power is off.

Wi-Fi On/Off 

Press to turn Wi-Fi on or off. An illuminated LED on the button indicates that Wi-Fi is turned on. Hold the button for 3 seconds to enter device pairing mode.

Standby 

Turn on the appliance with the last used settings without any heat. This places the appliance into standby mode with all features turned off.

Heat Mode 

Press 1 time = fan without heat Press 3 times = high heat setting
 Press 2 times = low heat setting Press 4 times = no heat/no fan

Preset Mode 

Press repeatedly to cycle through the 6 fire preset modes (+3 user-defined presets if programmed).

Remote Control Operation

Ensure that 2 AAA batteries are installed into the remote control handset. The battery power level is indicated by the column of bars to the right side of the temperature display when the appliance is in standby mode. 5 bars indicate the batteries are full, and 1 bar indicates the batteries are empty and need to be replaced immediately.

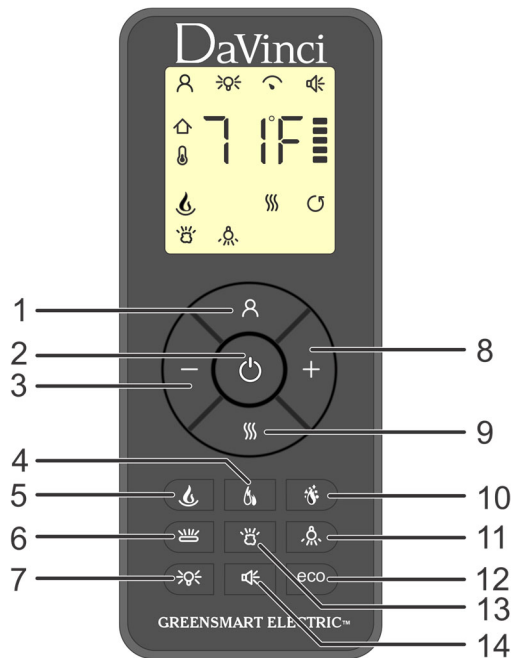
REMOTE CONTROL PAIRING

If the remote control screen is illuminated but is unresponsive it may need pairing with the appliance. To do this, press and hold the Standby button on the appliance until you hear two beeps. Then press and hold the Standby button on the remote control until you hear one beep. The remote is now synched with the appliance.

Button 1: Preset Fire Mode

Repeatedly press to cycle through the 6 preset fire modes (+ 3 user-defined presets if programmed).

| Display | Fire Mode | Display | Fire Mode |
|---------|-----------------|---------|---------------|
| Pr.1 | Log Burner | Pr.6 | Glowing Ember |
| Pr.2 | Modern Loft | Pr.7 | User Preset |
| Pr.3 | Lazy Glow | Pr.8 | User Preset |
| Pr.4 | Neon Romance | Pr.9 | User Preset |
| Pr.5 | Campfire Sparks | | |



How to Create Your Own Preset Fire Mode

There are 3 preset spaces allocated for the user to save personalized Electric Fire creations. Simply choose the flame color and brightness level, the fuel bed color and brightness level, and the fuel bed downlight color and brightness level. Once you have selected your desired combination, press and hold the Preset Mode button for 3 seconds until the LCD displays Pr.7. Press (–) and (+) buttons to select a slot number between 7-9. Press and hold the Preset Mode button for 3 seconds to confirm the preset.

Button 2: Standby

Turns on the appliance with the last used settings without any heat. Pressing again places the appliance into standby mode with all features turned off.

Button 3 & 8: Minus (-) & Plus (+)

Used to navigate through different on-screen menus turn up or down the intensity of the log color, fuel bed color, and sound.

Button 4: Flame High/Low

Press once = Flame Low

Press twice = Flame High

Button 5: Flame Style

Repeatedly press to cycle through the flame style menu (see below).

| Display on Screen | Flame Style |
|-------------------|--|
| FL.0 | Flame off |
| FL.1 | Flame type A (gas style flame), Orange |
| FL.2 | Flame type A (gas style flame), Yellow |

| Display on Screen | Flame Style |
|-------------------|---|
| FL.3 | Flame type A (gas style flame), White |
| FL.4 | Flame type B (wood burning style flame), Orange |

Button 6: Log Color

Repeatedly press to cycle through the log color menu. While in the log color menu, press the plus and minus buttons to increase and decrease the fuel bed brightness - 1 bar is the dimmest setting, and 5 bars is the brightest setting.

| Display | Log Color |
|---------|--------------|
| Lc.0 | Fuel Bed Off |
| Lc.1 | Red |
| Lc.2 | Orange |
| Lc.3 | Yellow |
| Lc.4 | Green |

| Display | Log Color |
|---------|-------------------------|
| Lc.5 | Light Blue |
| Lc.6 | Dark Blue |
| Lc.7 | Violet |
| Lc.8 | White |
| Lc.9 | Multi-color Auto Change |

Button 7: Ambient Lighting (if using optional Ambient Lighting Kit)

Repeatedly press to turn on ambient lighting and cycle through the different color options.

Button 9: Heater Mode

Press to cycle through the heat output options.

| Display | Heater Mode |
|---------|---------------------|
| Co.A | Fan on with no heat |
| H.Lo | Low Heat |

| Display | Heater Mode |
|---------|----------------------------|
| H.HI | High Heat |
| no.H | No Heat – Heat and Fan Off |

While in heater mode, after selecting low or high heat setting, press the (-) and (+) buttons to select the temperature you want the room to reach. Note: If the room temperature is already higher than the temperature selected, the heater will not activate. To switch between °C/°F hold down the (-) and (+) buttons for 3 seconds.

Open Window Detection is an innovative eco feature that detects a rapid drop in room temperature caused by an open door or window. The warning word “OPn” will be displayed on the screen and the heater will be turned off. If the room temperature rises or the remote control is operated manually, the heater will return to its normal working state.

Button 10: Sparks

Press to activate or deactivate the sparks and smoke feature.

Press once = Spark on Press twice = Spark off

Button 11: Fuel Bed Downlight

Press to cycle through the Fuel Bed downlight menu. While in the fuel bed downlight menu, press the plus and minus buttons to increase and decrease the fuel bed brightness - 1 bar is the dimmest setting, and 5 bars is the brightest setting.

| Display | Downlight Mode |
|---------|----------------|
| dL.0 | Light off |
| dL.1 | Warm white |
| dL.2 | Cool white |

Button 12: Eco Mode

Press to activate Eco mode. This mode will reduce the brightness of all lighting modes and limit the heat output to low setting, resulting in reduced energy consumption. Press the button a second time to exit Eco mode.

Button 13: Fuel Bed Color

| Display | Log Color |
|---------|--------------|
| Fb.0 | Fuel Bed Off |
| Fb.1 | Red |
| Fb.2 | Orange |

| Display | Log Color |
|---------|------------|
| Fb.3 | Yellow |
| Fb.4 | Green |
| Fb.5 | Light Blue |

| Display | Log Color |
|---------|-----------|
| Fb.6 | Dark Blue |
| Fb.7 | Violet |
| Fb.8 | White |

| Display | Log Color |
|---------|-------------------------|
| Fb.9 | Multi-color Auto Change |

Button 14: Sound Effect

Press to open the sound effect menu.

Press once - S.on = Sound effect on Press twice - no.S = Sound effect off

While in the sound effect menu, press the plus and minus buttons to increase and decrease the volume - 1 bar is the quietest setting, and 5 bars is the loudest setting.

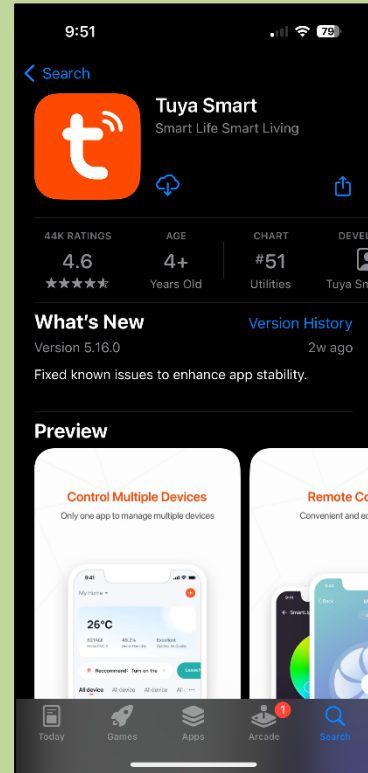
App Control

There are (2) methods for connecting the fireplace to the DaVinci app. The automatic method allows the app to identify and connect to the fireplace on its own. If for some reason this method does not work, proceed to the next section titled "Manual app installation and setup" and try that method.

AUTOMATIC APP INSTALLATION AND SETUP

Step 1

Download the Tuya Smart app from your app store and open the Tuya App on your device.

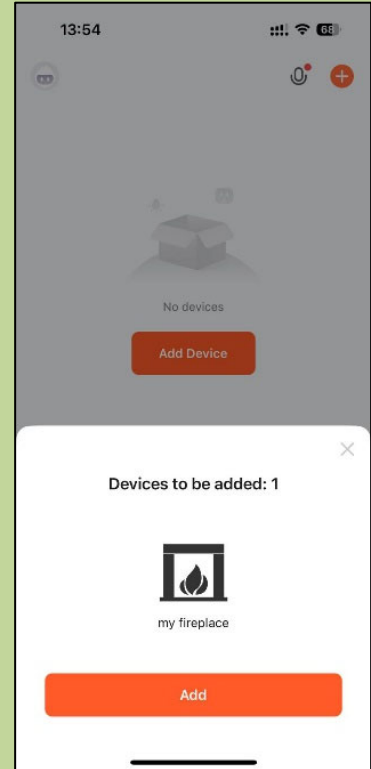
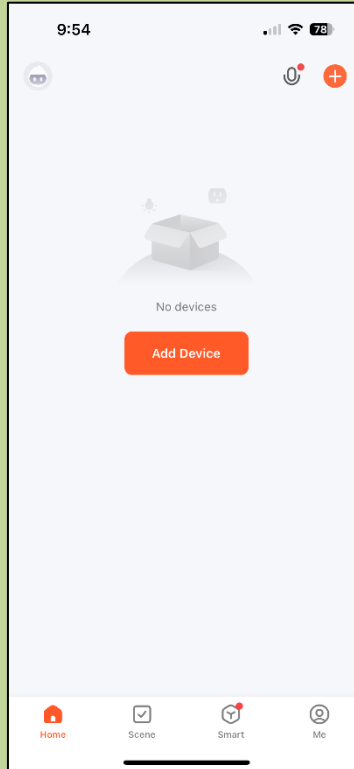
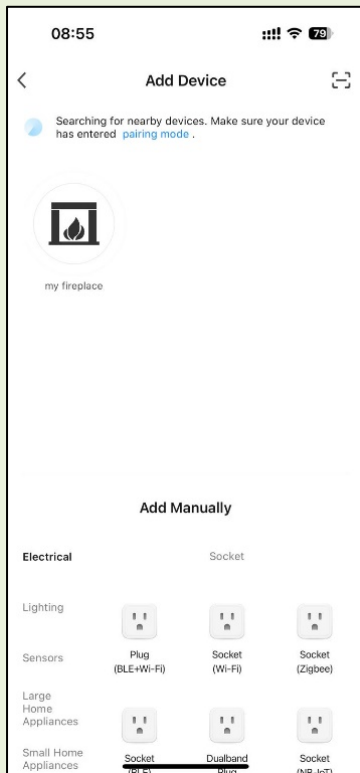


Step 2

Sign up to the tuya app or use an existing log in (Do not use the Try as Guest option).

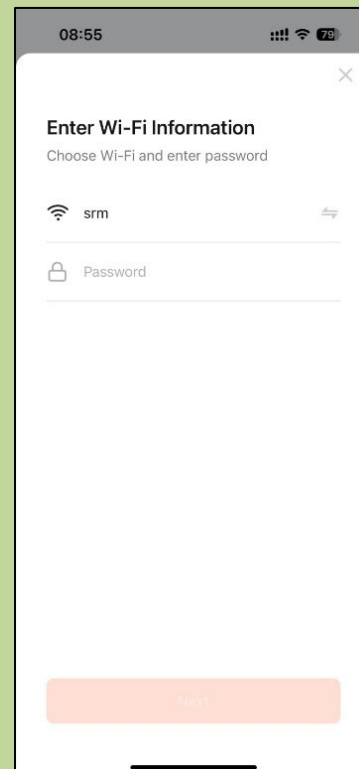
Step 3

Now press the Add device button in the middle of the screen to search for the appliance. Or alternatively tuya may notify you there is an appliance ready to connect which will skip Step 4.



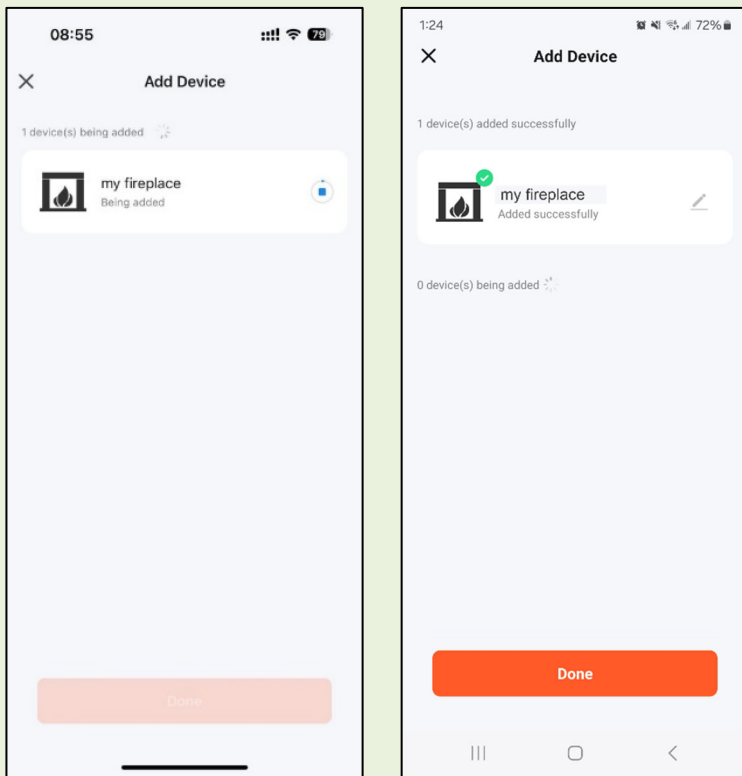
Step 4

The tuya app will automatically find your appliance , press the fireplace icon to connect with the name, press the done button at the bottom of the screen



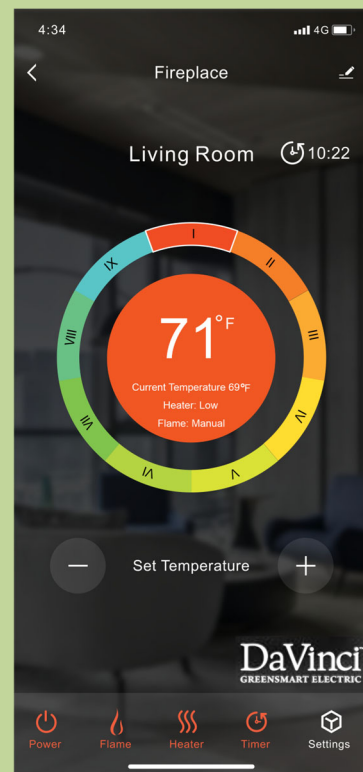
Step 5

Enter your Wifi name and password for the appliance to connect to , you will also need to ensure your device is connected to the wifi network in your phone settings. Once this is complete the app will begin to connect to the appliance



Step 6

When the app is connected you can choose to edit the name of the appliance using the pencil icon.



Step 7

You will now be able to control the appliance via the app, switch on the appliance with the power button to begin. If you would like to use more than one device to control the appliance, please see the Sharing access section.

If automatic method was not successful in connecting the fireplace with the app, follow the steps in the next section “Manual App Installation and Setup”.

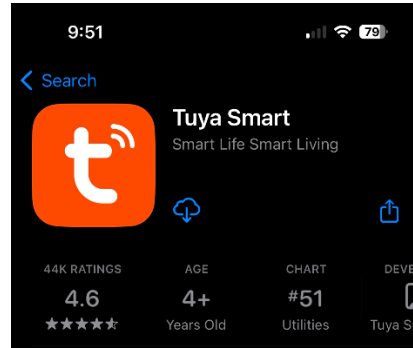
MANUAL APP INSTALLATION AND SETUP

To connect your Fireplace to the DaVinci app you will need the following.

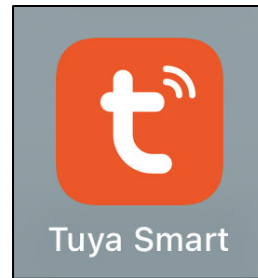
- ✓ A device running the Android or iOS operating system such as a tablet or smartphone.
- ✓ A network within range of the fireplace.
- ✓ A valid email address that you can access for a verification code.

STEP 1 – DOWNLOAD THE TUYA SMART APP AND CREATE A USER ACCOUNT

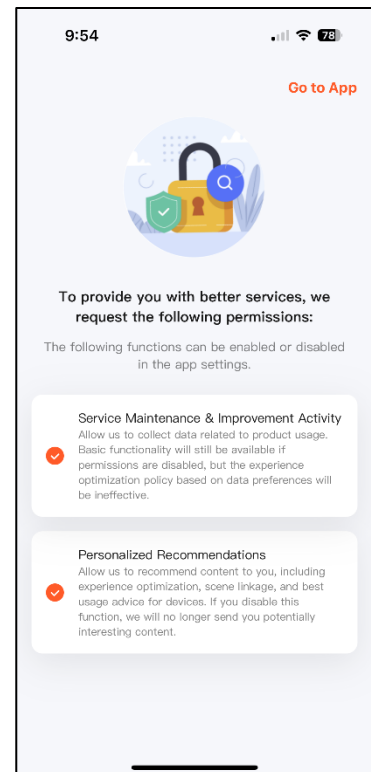
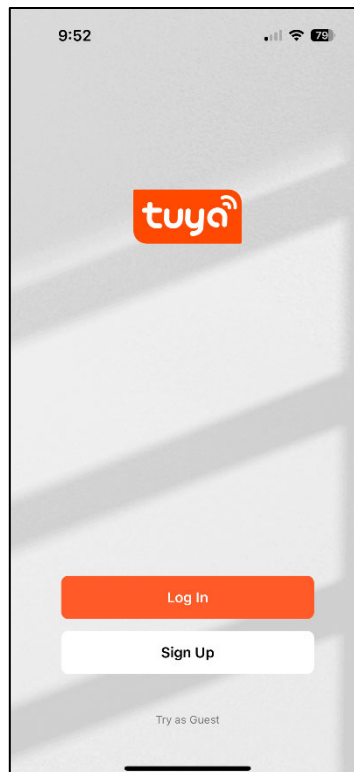
- Download the Tuya Smart app from whichever app store you use.



- Once downloaded the TUYA icon will appear on your device's home screen, you can now open this app by tapping the icon.

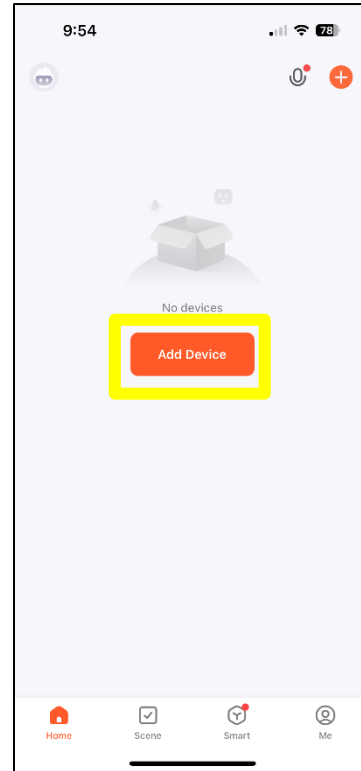


- Follow the directions in the app to create an account, a valid email address will be required to complete the account setup process. Once your account is set up you will be asked several questions about permissions. Follow the on-screen prompts and make your selections.

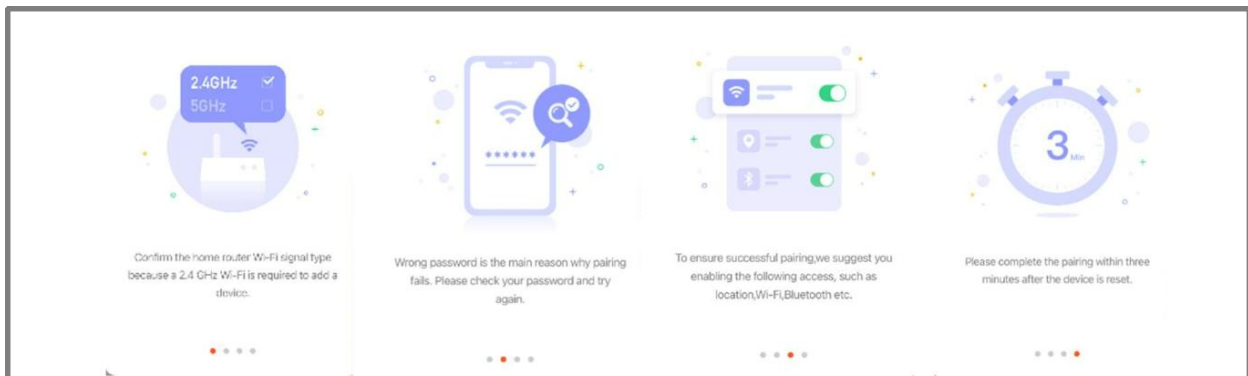


STEP 2 – CONNECT YOUR APPLIANCE TO THE APP

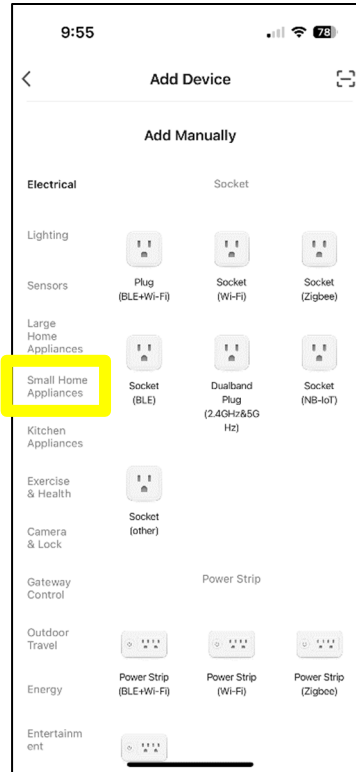
- Now you can begin the process of connecting your appliance to the app. At the app home screen press the “Add Device” button.



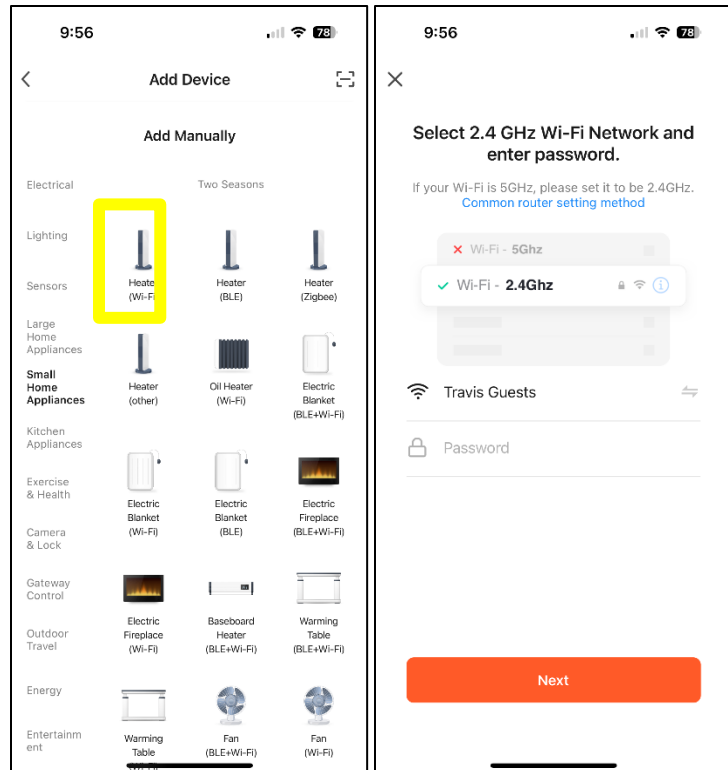
- Once the password has been entered, you will be presented with a checklist to ensure trouble-free connection of your appliance to the network. You may also be asked to allow location permissions, please read, and follow the on-screen prompts.



- After you have made your selections regarding permissions, you will need to choose which device to pair, please select “Small Home Appliances” from the menu as shown to the right.

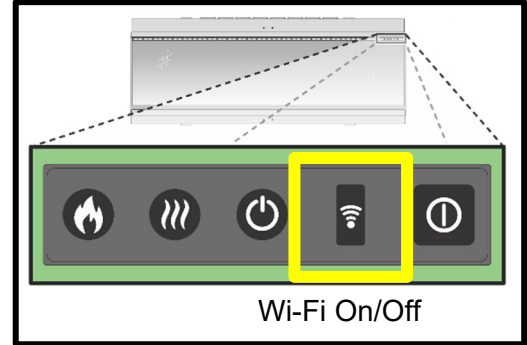


- Now from the list of small home appliances select Heater (Wi-Fi). The app will then prompt you to enter your Wi-Fi password, ensure the correct network is selected, enter your Wi-Fi password, and then press the next button.



- Next, the app will prompt you to reset the device. This refers to placing your fireplace into “Pairing Mode”. Before tapping next you will need to put your appliance into pairing mode. To enter “Pairing Mode” turn the fireplace on using the “Power Button”.

Locate the “Wi-Fi On/Off” button above the upper-right corner of the front glass. Press and hold the Wi-Fi button on the fireplace. located on the underside of the top right-hand corner of the fireplace (as shown to the right) until the fuel bed flashes red.



- Once the fire is placed in pairing mode with a flashing red fuel bed, tap the “Next” button on the app and choose the “Blink Quickly” button this will then begin to search for the fireplace. When it has successfully paired the fireplace, the fuel bed will display solid green.



Flashing Red = In pairing mode

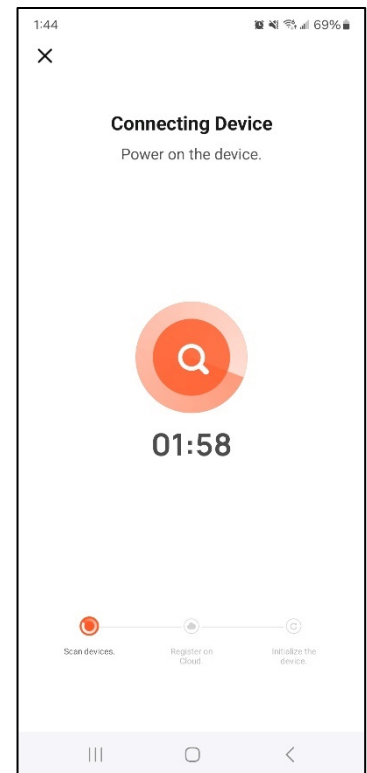
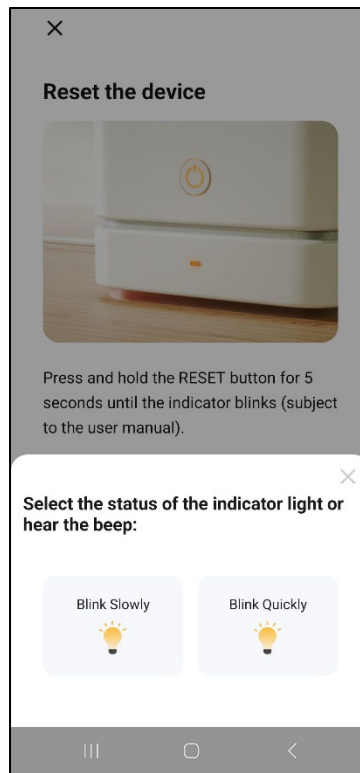


Solid Green – Successfully paired



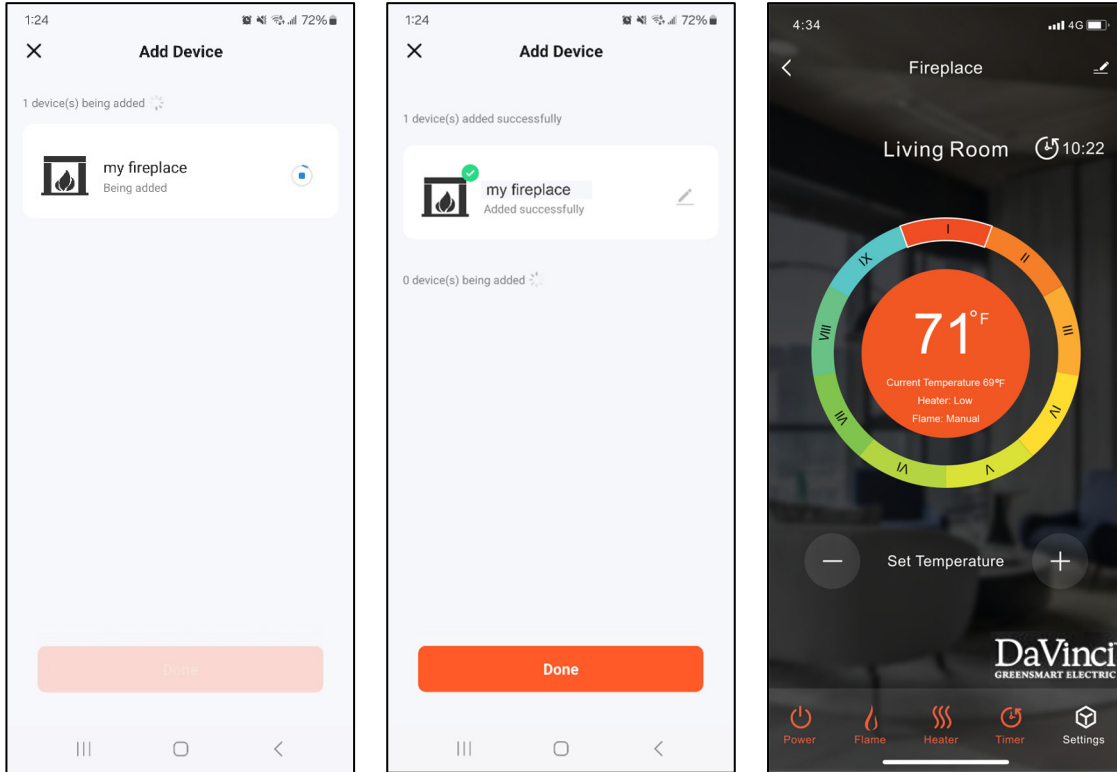
Flashing Blue – Failed pairing

NOTE: the fuel bed color indicates the status of the fire. When first initiating the pairing, the fuel bed will flash red. Once successfully paired the fuel bed will display green. If a flashing blue fuel bed appears repeat the pairing procedure.



STEP 3 – SUCCESSFUL PAIRING

Once paired with the fireplace, the app can be used to control the fireplace. The fireplace will now be shown on the Tuya home screen. Select the appliance to begin using the DaVinci/Fireplace Xtrordinair app. To turn the fireplace on, use the power button as highlighted in the illustration below.



Advanced Wi-Fi Router Guidance

Wireless transmissions get weaker as you get further from your wireless router, they can also be disrupted by building materials, such as metal framing, walls & floors.

For the best possible connection to your appliance, the location of your wireless router in relation to your appliance is key:

- If there are certain areas of your home where you find your signal drops, it may be due to interference.
- Large objects can often obstruct or interfere with a wireless connection, so it is best to keep your router off the ground and away from larger items.
- Avoid putting your router behind the sofa, inside a cabinet, or behind a door - It may look like a convenient location, if you are experiencing an issue this could be the cause of the problem.

You should also keep electronics such as microwaves, lamps, speakers, TVs, and monitors as far away from the router as possible.

If issues are encountered when trying to connect your appliance, our best advice would be to follow the below:

1. Check the location of the appliance in relation to the wireless router. Are there any objects that may be causing a problem with the signal?
2. Check if you are experiencing the same connection problem across other devices: you can do this by checking their Wi-fi status. Typical devices to check would be your mobile phones, tablets, laptops, and televisions.
3. Try adding a new device to your wireless network – this will verify that the wireless password & SSID are correct.
4. Are you using wireless extenders? If so, turn off all wireless extenders and try adding a new device (a mobile phone for example) in the same location as your wireless router. This confirms that your Wireless router is connecting to new devices without issue.
5. Reset your wireless router.

Tips and Advice

If the appliance is installed out of the range of your wireless network, the Wi-Fi signal will not be detected by the appliance. It may be too far away from your router. You may need to purchase a signal booster to extend the range of your home network. You can purchase a Wi-Fi booster from an electronics retailer or online.

How do I know if my Wi-Fi signal is strong enough or if the appliance is out of range?

Simply stand in front of the appliance holding a smart device (such as a phone or tablet) that is already connected to your home router, in close proximity to the control panel – you will find the control panel on the front of the appliance to the right side of the heater outlet. Check the Wi-Fi indicator on the smart device to determine the signal strength. If the signal strength is not full, it may indicate a connectivity issue. If they are greyed out or only 1 or 2 bars are showing, then the signal strength of your home network may need boosting in order for your Tuya app to control the appliance.

Voice Control

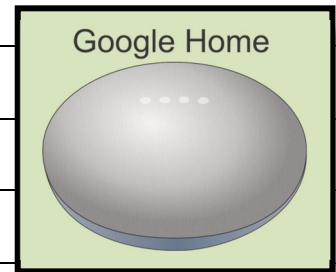
An Amazon Alexa or Google Assistant smart device is required to utilize the voice control system. After setting up your DaVinci appliance with the Tuya app, connect it to your chosen smart device as follows:

In the Tuya app, select your appliance which will take you to the Vision Trimline home page (stating 'Living Room' and showing the circular temperature dial). Tap the **"Settings"** icon (depicted by a pen and lines) in the top right-hand corner of the screen. Next, tap **"Third-party Control"** and choose either **"Alexa"** or **"Google Assistant"**. Finally, click either **"Link to Amazon Alexa"** or **"Link to Google Assistant"** and follow the on-screen instructions to complete the pairing setup. Once paired, the following voice commands can be used:

NOTE: <my fireplace> refers to the name set for the DaVinci appliance within the smart device settings. This can be changed to suit your preference.

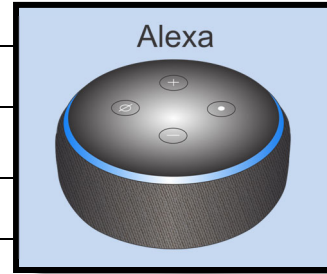
Google Device

| Function | Command |
|--------------------------------------|---|
| Fireplace On/Off | OK Google, turn on <my fireplace> OK Google, turn off <my fireplace> |
| Flame On/Off | OK Google, turn on flame on <my fireplace> OK Google, turn off flame on <my fireplace> |
| Flame Mode Auto/Manual | OK Google, set flame mode on <my fireplace> to auto OK Google, set flame mode on <my fireplace> to manual |
| Heater On/Off | OK Google, turn on heater on <my fireplace> OK Google, turn off heater on <my fireplace> |
| Heater Auto/Low/High/Cool Air | OK Google, set heat mode on <my fireplace> to auto OK Google, set heat mode on <my fireplace> to low OK Google, set heat mode on <my fireplace> to high OK Google, set heat mode on <my fireplace> to cool air |
| ECO On/Off | OK Google, turn on heater on <my fireplace> OK Google, turn off heater on <my fireplace> |
| My Flame Preset | OK Google, set my favorite flame on <my fireplace> to 1 (or 2 - 9) |
| Flame Color | OK Google, set flame color on <my fireplace> to 1 (or 2, 3, 4) OK Google, set flame color on <my fireplace> to off |
| Flame Height | OK Google, set flame height on <my fireplace> to low OK Google, set flame height on <my fireplace> to high |
| Sparks On/Off | OK Google, turn on sparks on <my fireplace> OK Google, turn off sparks on <my fireplace> |
| Fuel Bed Color | OK Google, set fuel bed color on <my fireplace> to 1 (or 2 - 9) OK Google, set fuel bed color on <my fireplace> to off |
| Glowing Logs Color | OK Google, set glowing logs color on <my fireplace> to 1 (or 2 - 9) OK Google, set glowing logs color on <my fireplace> to off |
| Down Light Color | OK Google, set down light color on <my fireplace> to orange OK Google, set down light color on <my fireplace> to white OK Google, set down light color on <my fireplace> to off |
| Ambient Lighting On/Off | OK Google, turn on mood light on <my fireplace> OK Google, turn off mood light on <my fireplace> |
| Ambient Lighting Color | OK Google, set mood light color on <my fireplace> to 1 (or 2 - 14) OK Google, set mood light color on <my fireplace> to off |
| Sound Effect On/Off | OK Google, turn on sound on <my fireplace> OK Google, turn off sound on <my fireplace> |
| Volume | OK Google, mute <my fireplace> |
| Timer | OK Google, set timer on <my fireplace> to 30 minutes (or half an hour, 1 hour, 2 hours, etc.) OK Google, cancel timer on <my fireplace> |
| Set Room Temperature | OK Google, set <my fireplace> temperature to N Celsius (N=5-40) OK Google, set <my fireplace> temperature to N Fahrenheit (N=41-104) |



Alexa Device

| Function | Command |
|---|---|
| Fireplace On/Off | Alexa, turn on <my fireplace> Alexa, turn off <my fireplace> |
| Flame On/Off | Alexa, turn on flame on <my fireplace> Alexa, turn off flame on <my fireplace> |
| Flame Mode Auto/Manual | Alexa, set flame mode on <my fireplace> to auto Alexa, set flame mode on <my fireplace> to manual |
| Heater On/Off | Alexa, turn on heater on <my fireplace> Alexa, turn off heater on <my fireplace> |
| Heater Auto/Low/High/ Cool Air | Alexa, set heat mode on <my fireplace> to auto Alexa, set heat mode on <my fireplace> to low Alexa, set heat mode on <my fireplace> to high Alexa, set heat mode on <my fireplace> to cool air |
| ECO On/Off | Alexa, turn on ECO on <my fireplace> Alexa, turn off ECO on <my fireplace> |
| My Flame Preset | Alexa, set my favorite flame on <my fireplace> to 1 (or 2 - 9) |
| Flame Color | Alexa, set flame color on <my fireplace> to 1 (or 2, 3, 4) Alexa, set flame color on <my fireplace> to off |
| Flame Height | Alexa, set flame height on <my fireplace> to low Alexa, set flame height on <my fireplace> to high |
| Sparks On/Off | Alexa, turn on sparks on <my fireplace> Alexa, turn off sparks on <my fireplace> |
| Fuel Bed Color | Alexa, set fuel bed color on <my fireplace> to 1 (or 2 - 9) Alexa, set fuel bed color on <my fireplace> to off |
| Glowing Logs Color | Alexa, set glowing logs color on <my fireplace> to 1 (or 2 - 9) Alexa, set glowing logs color on <my fireplace> to off |
| Down Light Color | Alexa, set downlight color on <my fireplace> to orange Alexa, set downlight color on <my fireplace> to white Alexa, set downlight color on <my fireplace> to off |
| Ambient Lighting On/Off | Alexa, turn on mood light on <my fireplace> Alexa, turn off mood light on <my fireplace> |
| Ambient Lighting Color | Alexa, set mood light color on <my fireplace> to 1 (or 2 - 14) Alexa, set mood light color on <my fireplace> to off |
| Sound Effect On/Off | Alexa, turn on sound on <my fireplace> Alexa, turn off sound on <my fireplace> |
| Volume | Alexa, turn up volume on <my fireplace> Alexa, turn down volume on <my fireplace> |
| Set Room Temperature | Alexa, set <my fireplace> to 5-104 Alexa, make it warmer in here Alexa, make it cooler in here |



DANGER HIGH VOLTAGE:

Disconnect power and allow the appliance to cool before attempting maintenance or repair

Yearly Service Procedure

- Failure to inspect and maintain the fireplace may lead to improper operation and a potentially dangerous situation. We recommend the following procedures be done by a qualified technician.

**THIS FIREPLACE IS NOT
USER-SERVICEABLE**

Contact your dealer for service.

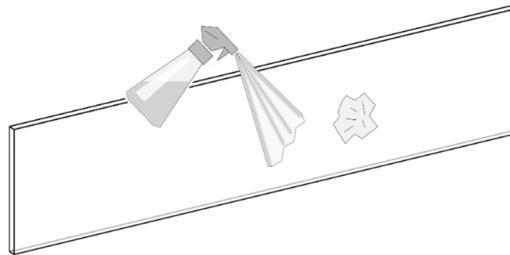
Any repairs or maintenance should only be carried out by a suitably qualified competent person.

The appliance should be occasionally cleaned using a dry cloth. **Do not use detergents, abrasive cleaners, or furniture polish.**

To clean the glass, use a lightly damp cloth and ensure any moisture is dried fully using a lint-free cloth. Ensure that the heater outlet is kept dust-free by occasionally vacuuming the area using a brush attachment.

Glass Cleaning



The glass may be cleaned with a non-abrasive cleaner. To clean the inside of the glass, remove the glass, place it on a non-scratching surface, and clean the inside surface.



Troubleshooting**Resetting the Thermal Cut Out**

The appliance is fitted with an Electronic Safety Control (E.S.C.). This is a safety device that switches off the appliance if, for any reason, the appliance overheats, e.g. when covered. If the heater stops operating while the flame effect continues working normally, this indicates that the E.S.C. is in operation. The E.S.C. can only be reset after the appliance has cooled down and the appliance has been reset. Re-setting of the E.S.C. procedure is as follows:

1. Switch off the appliance (Manual On/Off switch) and leave it off for approximately 10-15 minutes.
2. Remove any obstruction to the fan heater outlet or fan blades etc. Make sure that the power supply is disconnected with the plug socket outlet while doing this.
3. Switch on the appliance and the E.S.C. will be reset.
4. Ensure that the appliance is functioning correctly. If the E.S. Control operates again, the appliance should be checked by a competent service technician or electrician.

| PROBLEM | POSSIBLE CAUSE | SOLUTION |
|---|---|--|
| Appliance will not turn on. | <ul style="list-style-type: none"> • Problem with power supply. | <ul style="list-style-type: none"> • Check that the appliance is properly connected to incoming power and switched on. • Check the electrical breaker for the circuit. • Check that the main power switch on the appliance is turned on. |
| Remote control does not work. | <ul style="list-style-type: none"> • Batteries have expired. • Remote has to be synched with the appliance. | <ul style="list-style-type: none"> • Replace batteries. • Press and hold the standby button  on the fireplace for 3 seconds (fireplace will beep 2x), then press the standby button  on the remote. |
| No heat | <ul style="list-style-type: none"> • Incorrect thermostat setting. • Overheating may have engaged the E.S.C. feature. | <ul style="list-style-type: none"> • Increase the desired temperature higher than the current room temperature. • See above for the reset procedure. |
| Heat turns off before desired temperature is reached. | <ul style="list-style-type: none"> • Open window detection has been activated. | <ul style="list-style-type: none"> • Check that any windows in the room are closed. |

Replacement Parts List

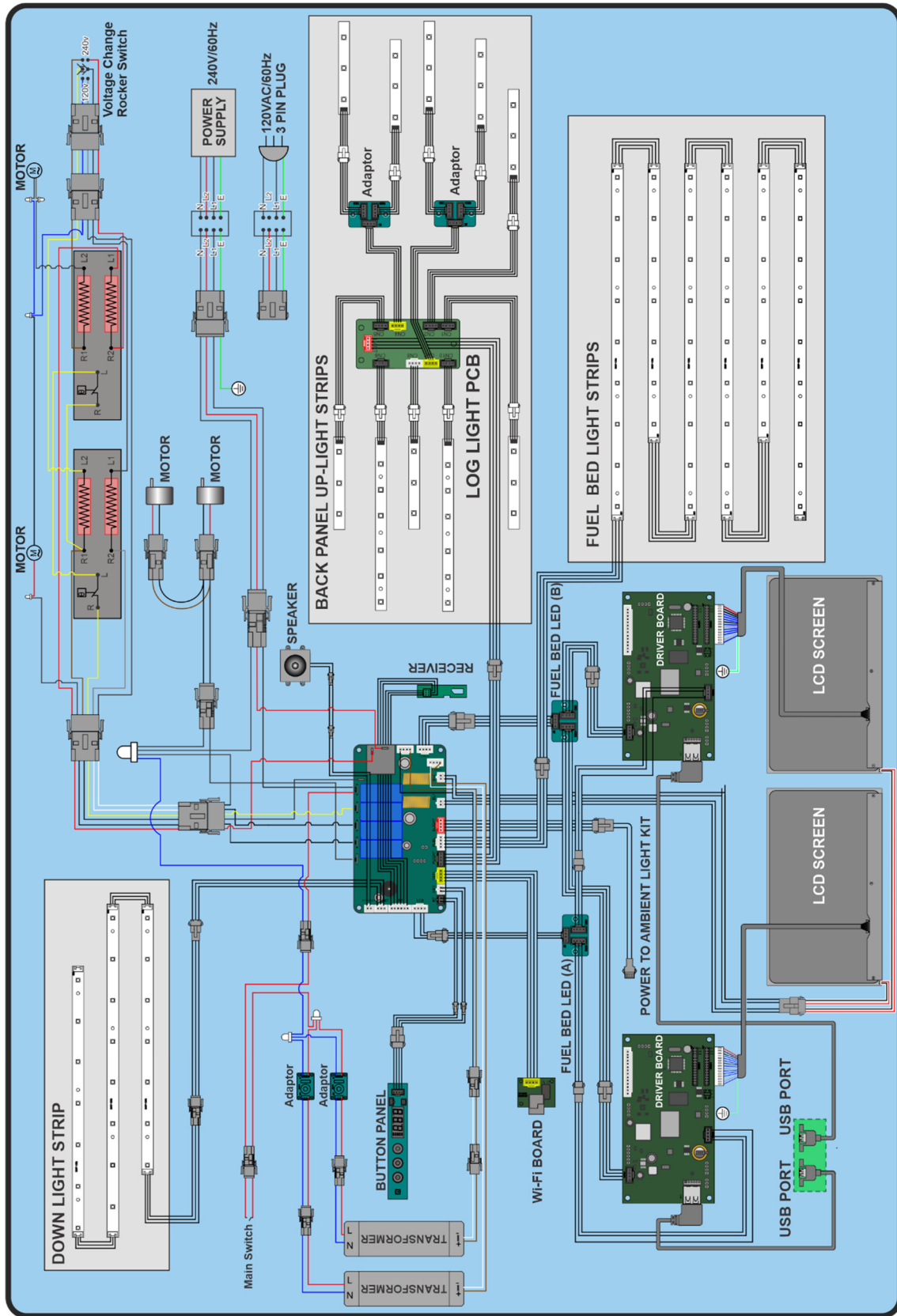
CAUTION: Use only Travis Industries replacement parts. Do not use substitute materials.

| Replacement Parts | |
|--|-----------|
| DAVINCI 59 GSE - LF. LCD DRIVER# | 250-06650 |
| DAVINCI 59 GSE - RT. LCD DRIVER# | 250-06651 |
| DAVINCI 59 GSE - SPEAKER# | 250-06652 |
| DAVINCI 59 GSE - DOWN LIGHT LED# | 250-06653 |
| DAVINCI 59 GSE - HEATER# | 250-06654 |
| DAVINCI 59 GSE - CONTROL PANEL# | 250-06655 |
| DAVINCI 59 GSE - SIDE PLATE (1-sided)# | 250-06656 |
| DAVINCI 59 GSE - SIDE TRIM (3-sided)# | 250-06657 |
| DAVINCI 59 GSE - FRONT GLASS# | 250-06658 |
| DAVINCI 59 GSE - SIDE GLASS# | 250-06659 |
| DAVINCI 59 GSE - FLAME SCREEN# | 250-06660 |
| DAVINCI 59 GSE - LOG LIGHT PCB# | 250-06661 |
| DAVINCI 59 GSE - FUEL BED LED BOARD A# | 250-06662 |
| DAVINCI 59 GSE - FUEL BED LED BOARD B# | 250-06663 |
| DAVINCI 59 GSE - SPINDLE MOTOR# | 250-06664 |
| DAVINCI 59 GSE - FUEL BED SPINDLE# | 250-06665 |
| DAVINCI 59 GSE - CONTROL BOX/PCB# | 250-06666 |
| DAVINCI 59 GSE - BACK PANEL UP-LIGHTS# | 250-06667 |
| DAVINCI 59 GSE - FUEL BED# | 250-06668 |
| DAVINCI 59 GSE - POWER UNIT# | 250-06669 |
| DAVINCI 59 GSE - INTERFACE BOARD# | 250-06670 |
| DAVINCI 59 GSE - REMOTE HANDSET# | 250-06671 |
| DAVINCI 59 GSE - LOG SET# | 250-06672 |
| DAVINCI 59 GSE - THUMBSCREWS# | 250-06673 |
| DAVINCI 59 GSE - GLASS RETAINING BAR# | 250-06674 |
| DAVINCI 59 GSE - LCD SCREEN# | 250-06692 |
| DAVINCI ALL GSE - ROCKER SWITCH# | 250-06693 |
| DAVINCI ALL GSE - WIRING INLET BOARD# | 250-06694 |
| DAVINCI ALL - POWER CORD# | 250-06695 |
| DAVINCI ALL GSE - RETAINING BRKT# | 250-06696 |

Contact your local DaVinci™ fireplace dealer to purchase replacement parts.

Wiring Diagram

Caution: Label all wires prior to disconnection when servicing controls. Wiring errors can cause improper and dangerous operation.



Travis Industries, Inc. warrants that your newly purchased Travis Industries, Inc. electric fireplace is free from manufacturing and material defects for a period of two (2) years from the date of the first purchase, subject to the conditions and limitations contained below.

Warranty Application & Exclusions

This limited warranty applies to your newly purchased Travis Industries, Inc. electric fireplace. The limited warranty's application is limited to purchases made in any province of Canada or any of the 50 States of the United States of America, including the District of Columbia. Only the original purchaser of the product is eligible for coverage under this limited warranty; the warranty is not transferable.

Warranty Coverage and Term

Products covered by this limited warranty have been tested and inspected prior to shipment and, subject to the provisions of this warranty, Travis Industries, Inc. warrants such products to be free from defects in material and workmanship for a period of two (2) years from the date of the first purchase of such products.

The limited two (2) year period for products also applies to any implied warranties that may exist under applicable law. Some jurisdictions do not allow limitations on how long an implied warranty lasts, so the above limitation may not apply to the purchaser.

All other warranties – expressed or implied – with respect to the product, its components, and accessories, or any obligation/liabilities on the part of TRAVIS INDUSTRIES, INC. are hereby expressly excluded.

Limitations to Coverage Under Limited Warranty

This limited warranty does not apply to products that have been repaired, except by Travis Industries, Inc. or its authorized service representatives, or otherwise altered. This limited warranty further does not apply to defects resulting from misuse, abuse, accident, neglect, incorrect installation, improper maintenance or handling, or operation with the incorrect power source. Products made by other manufacturers, sold with the product or thereafter, are not covered by this limited warranty. The use of unauthorized components will render this warranty null and void.

Service Under Limited Warranty

Defects must be brought to the attention of your local Travis Industries, Inc. dealer. Please have your proof of purchase, model, and appliance serial number available when calling. Any and all service under the limited warranty requires proof of purchase of the product.

Defects

Should a product or part covered by this limited warranty be proven to be defective, in material or workmanship, and during the two (2) year limited warranty period, TRAVIS INDUSTRIES, INC., will replace such defective product or part without charge. If Travis Industries, Inc. is unable to replace such product, or if replacement is not commercially practicable or cannot be timely done, in its sole discretion Travis Industries, Inc. may, in lieu of replacement, choose to refund the purchase price for such product or part.

Limitations

In no event will Travis Industries, Inc., including without limitation any of its directors, officers, shareholders, employees, consultants, agents, heirs, executors, administrators, and assigns, be liable to the purchaser of any third party, whether in contract, in tort, or on any other basis for any indirect, special, punitive, exemplary, consequential, or incidental loss, cost or damage arising out of or in connection with the sale, maintenance, use or inability to use the product, even if Travis Industries, Inc., including without limitation any of its directors, officers, shareholders, employees, consultants, agents, heirs, executors, administrators and assigns, have been advised of the possibility of such losses, costs or damages, or if such losses, costs or damages are foreseeable. In no event will Travis Industries, Inc., including without limitation any of its directors, officers, shareholders, employees, consultants, agents, heirs, executors, administrators, and assigns, be liable for any direct losses, costs, or damages that exceed the purchase price of the product. Some jurisdictions do not allow the exclusion or limitation of incidental or consequential damages, so the above limitation or exclusion may not apply to the purchaser.

Application of Provincial and State Law

This limited warranty gives you specific legal rights, and you may also have other rights from jurisdiction to jurisdiction. The provisions of the United Nations Convention on Contracts for the Sale of Goods shall not apply to this limited warranty or the sale of products covered by this limited warranty.

General

Travis Industries, Inc. reserves the right to make changes at any time without notice, in design, material, specifications, prices, and the right to discontinue styles and products.

IF WARRANTY SERVICE IS NEEDED:

1. If you discover a problem that you believe is covered by this warranty, you **MUST REPORT** it to your Travis Industries dealer **WITHIN 30 DAYS**, giving them proof of purchase, the purchase date, and the model name and serial number.
2. Travis Industries, Inc. has the option of either repairing or replacing the defective component.

| | | | |
|-----------------------------------|----|---|----|
| App Control Operation | 40 | Manual Control Operation..... | 37 |
| Before You Begin | 35 | Minimum Framing Dimensions | 14 |
| Dimensions | 10 | Normal Operating Sounds | 35 |
| Electrical Connection | 19 | Packing List..... | 8 |
| Facing & Mantel Requirements..... | 26 | Recommended Installation Procedure | 9 |
| Fireplace Configurations | 24 | Remote Control Operation..... | 38 |
| Fuel Bed Uplights | 25 | Replacement Parts List..... | 53 |
| Glass Cleaning | 51 | Safety Warnings..... | 4 |
| Glass Removal..... | 22 | Specifications..... | 7 |
| Hearth Requirements | 18 | TV Installations above the Fireplace..... | 27 |
| Installation | 21 | Voice Control Operation | 49 |
| Installation Options..... | 7 | Wiring Diagram | 54 |
| Location of Controls | 36 | Yearly Service Procedure | 51 |
| Log and Media Installation | 28 | | |