



DA25 SERIES



UP TO 23.5 SEER
UP TO 11.5 HSPF



COMFORT AT ITS BEST



COMFORT AT ITS BEST

WHY CHOOSE DIRECT AIR?

Direct Air units are manufactured based on Canadian high quality standards and allow us to provide the market with superior quality products, durability, and have one of the best warranties on the market.

PRODUCT LINES

Direct Air offers a wide selection of air quality products such as ventilation systems, electric furnaces, high-efficiency filters, air conditioners, and heat pumps for your home and business.

ACCREDITATIONS



* Certain models are Energy Star and NEEP

OPERATING TEMPERATURES:

COOLING: -25° C TO 50° C

HEATING: -25° C TO 30° C

- Up to 23.5 SEER
- HSPF up to 11.5
- Works in temperatures as low as -25°C
- Energy Star listed

ALL INDOOR UNITS ARE COMPATIBLE WITH SINGLE/MULTI-ZONE SYSTEMS AND INCLUDE:

- Automatic restart
- Automatic defrosting
- 24-hour timer
- Low-temperature cooling
- Optional Wi-Fi, compatible with *Google*, *Alexa*, and most other smart home management systems

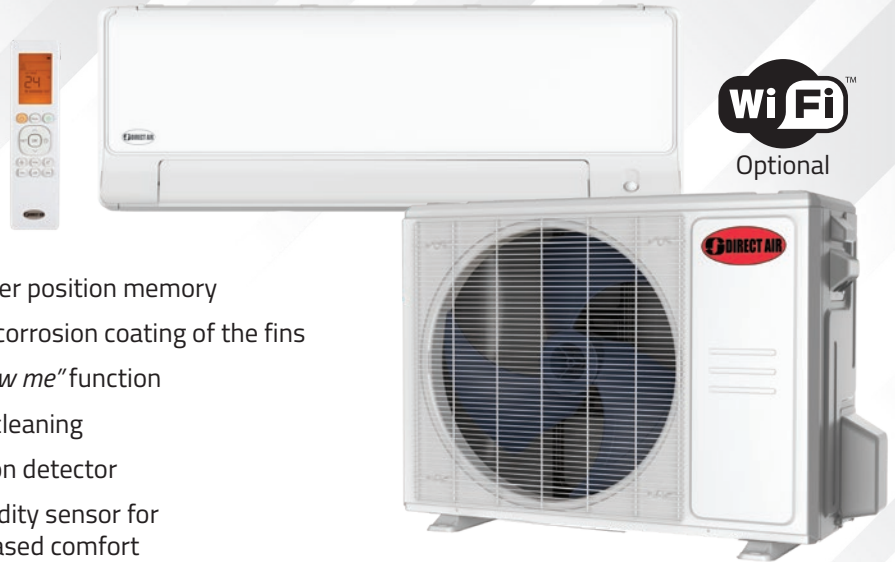


SINGLE ZONE INSTALLATION

HIGH WALL UNITS

All indoor units are compatible with single and multi-zone systems

- 12-speed fan
- Sleep mode
- Turbo mode
- Eco mode
- Left or right drain
- Refrigerant leak detector
- Biofilter
- Shutter position memory
- Anti-corrosion coating of the fins
- "Follow me" function
- Self-cleaning
- Motion detector
- Humidity sensor for increased comfort



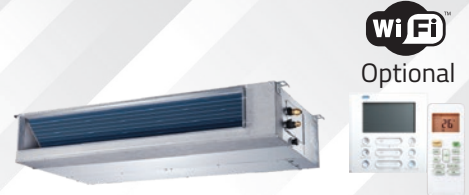
Outdoor Unit Model			DIRM-09DA25-1Z	DIRM-12DA25-1Z	DIRM-18DA25-1Z	DIRM-24DA25-1Z
Indoor Unit Model			DIRM-09DA25-WM	DIRM-12DA25-WM	DIRM-18DA25-WM	DIRM-24DA25-WM
Capacity			9K	12K	18K	24K
Power Supply (rated)		V, Ph, Hz	208/230, 1, 60	208/230, 1, 60	208/230, 1, 60	208/230, 1, 60
Max. Breaker		A	15.0	15.0	25.0	30.0
Fan Motor		qty	1	1	1	1
Cooling	Rated Capacity (range)	BTU/h	9 000 (2 500 ~ 11 900)	12 000 (3 600 ~ 13 300)	18 000 (2 000 ~ 19 300)	24 000 (9 200 ~ 26 800)
	SEER	BTU/W	Up to 25,5 - Depending on the indoor unit			
Heating at 47 °F (8.3 °C)	Rated Capacity (range)	BTU/h	10 000 (3 400 ~ 13 000)	12 000 (4 500 ~ 13 500)	19 000 (6 200 ~ 21 000)	25 000 (10 350 ~ 27 000)
	COP	W/W	3.95	3.72	3.37	3.75
	HSPF (region 4)	BTU/W	12.2	13.2	12	12
	HSPF (region 5)	BTU/W	10.0	11	10	10
Heating at 5 °F (-15 °C)	Rated Capacity	BTU/h	8 300	9 500	12 200	15 800
	COP	W/W	1.85	1.8	2.2	1.9
Outdoor Sound Level		dB(A)	53	53.5	58	60
Outdoor Unit	Dimensions (W × D × H)	mm	765 × 303 × 555	765 × 303 × 555	890 × 342 × 673	946 × 410 × 810
		inch	30.12 × 11.93 × 21.85	30.12 × 11.93 × 21.85	35.04 × 13.46 × 26.50	37.24 × 16.14 × 31.89
	Weight Net • Gross	kg	28.9 • 31.3	28.9 • 31.3	43.1 • 46.2	56.6 • 61.2
		lb	63.71 • 69.00	63.71 • 69.00	95.02 • 101.85	124.78 • 134.92
Indoor Unit	Dimensions (W × D × H)	mm	795 × 225 × 295	795 × 225 × 295	965 × 239 × 319	1 140 × 275 × 370
		inch	31.30 × 8.86 × 11.61	31.30 × 8.86 × 11.61	37.99 × 9.41 × 12.56	44.88 × 10.83 × 14.57
	Weight Net • Gross	kg	10.3 • 13.1	10.4 • 13.1	12.3 • 16.2	19.8 • 24.9
		lb	22.71 • 28.88	22.93 • 28.88	27.12 • 35.71	43.65 • 54.89
Refrigerant	Type / Charge	g	R410A / 1080	R410A / 1080	R410A / 1600	R410A / 2350
		oz	R410A / 38.1	R410A / 38.1	R410A / 56.44	R410A / 82.89
Refrigerant Piping	Liquid Side • Gas Side	mm	6.35 • 9.53	6.35 • 12.7	6.35 • 12.7	9.53 • 15.88
		inch	1/4 • 3/8	1/4 • 1/2	1/4 • 1/2	3/8 • 5/8
	Max. Pipe Length	m	25.0	25.0	30.0	50.0
		ft	82.0	82.0	98.0	164.0
	Max. Difference in Level	m	10.0	10.0	20.0	25.0
		ft	32.8	32.8	66.0	82.0
Operating Temperatures (range)	Cooling	°C	-25 ~ 50	-25 ~ 50	-25 ~ 50	-25 ~ 50
		°F	-13 ~ 122	-13 ~ 122	-13 ~ 122	-13 ~ 122
	Heating	°C	-25 ~ 24	-25 ~ 24	-25 ~ 24	-25 ~ 24
		°F	-13 ~ 75	-13 ~ 75	-13 ~ 75	-13 ~ 75



COMFORT AT ITS BEST

DUCT UNITS

- Built-in drain pump
- Flexible air intake (back or top)
- Filter
- Variable static pressure control
- Remote control and programmable wall control included
- Anti-corrosion coating of the fins
- Electric duct heater optional
- Available for both horizontal and vertical installations



Indoor Unit Model			DIRM-09HP-DUH & DIRM-09HP-DUV	DIRM-12HP-DUH & DIRM-12HP-DUV	DIRM-18HP-DUH & DIRM-18HP-DUV	DIRM-24HP-DU
Cooling	Capacity (maximum)	BTU/h	9 000 (11 600)	12 000 (13 450)	18 000 (18 000)	24 000 (28 200)
	EER	BTU/W	13.5	12.5	12.5	12.6
	SEER	BTU/W	21	21.5	20.5	21.5
Heating at 47 °F (8.3 °C)	Capacity (maximum)	BTU/h	10 000 (13 350)	12 000 (15 000)	20 000 (20 000)	24 600 (33 000)
	COP	W/W	3.76	3.37	3.12	3.52
	HSPF (region 4)	BTU/W	11.5	11.5	11	11.2
	HSPF (region 5)	BTU/W	9.2	9.5	9	9.5
Heating at 17 °F (-8.3 °C) (AHRI)	Capacity	BTU/h	10 038	10 200	14 100	18 885
Heating at 5 °F (-15 °C)	Capacity	BTU/h	8 499	7 300	10 500	15 688
Indoor Air Flow	(Hi • M • Lo)	CFM	352.94 • 282.35 • 176.47	352.94 • 282.35 • 176.47	529.41 • 450.00 • 370.59	775.47 • 693.06 • 434.88
Indoor Sound Level	(Hi • M • Lo)	dB(A)	33.5 • 28.5 • 27	38 • 34.5 • 31	43 • 40.5 • 38	44 • 41 • 37
Indoor Unit	Dimensions (W × D × H)	mm	700 × 506 × 200	700 × 506 × 200	880 × 725 × 210	1 092 × 762 × 254
		inch	27.56 × 19.92 × 7.87	27.56 × 19.92 × 7.87	34.65 × 28.53 × 8.27	43 × 30 × 10
	Weight Net • Gross	kg	17.7 • 21.9	17.8 • 22	25.1 • 30.4	41 • 48
Refrigerant Piping Diameter	Liquid side • Gas side	mm	6.35 • 9.53	6.35 • 12.70	6.35 • 12.70	9.53 • 15.88
		inch	1/4 • 3/8	1/4 • 1/2	1/4 • 1/2	3/8 • 5/8
External Static Pressure (ESP)		inch wc (range)	0 - 0.16	0 - 0.16	0 - 0.40	0 - 0.64

4-WAY CASSETTES

- Built-in drain pump
- Filter
- Variable static pressure control
- Remote control and programmable wall control included
- Anti-corrosion coating of the fins



Indoor Unit Model			DIRM-09HP-CA	DIRM-12HP-CA	DIRM-18HP-CA	DIRM-24HP-CA
Cooling	Capacity (maximum)	BTU/h	9 000 (10 500)	12 000 (14 100)	16 000 (16 000)	24 000 (26 272)
	EER	BTU/W	13	14	12.5	12.5
	SEER	BTU/W	20	22	20.5	20.7
Heating at 47 °F (8.3 °C)	Capacity (maximum)	BTU/h	10 000 (11 650)	12 000 (14 600)	18 500 (18 500)	25 000 (30 000)
	COP	W/W	3.08	3.37	2.78	3.26
	HSPF (region 4)	BTU/W	10.5	10.6	11.00	10.5
	HSPF (region 5)	BTU/W	9	9	9	8.5
Heating at 17 °F (-8.3 °C) (AHRI)	Capacity	BTU/h	9 450	9 350	13 600	17 000
Heating at 5 °F (-15 °C)	Capacity	BTU/h	8 500	7 400	9 500	16 000
	COP	W/W	2.04	1.89	1.75	2.12
Indoor Air Flow	(Hi • M • Lo)	CFM	352.94 • 305.88 • 270.59	379 • 309 • 261	562.35 • 485.29 • 438.82	705.88 • 635.29 • 547.06
Indoor Sound Level	(Hi • M • Lo)	dB(A)	37.5 • 34.5 • 31.5	40.5 • 35.5 • 31.5	43.5 • 38.5 • 35.5	49 • 46 • 43
Indoor Unit	Dimensions (W × D × H)	mm	570 × 570 × 260	570 × 570 × 260	570 × 570 × 260	830 × 830 × 205
		inch	22.44 × 22.44 × 10.24	22.44 × 22.44 × 10.24	22.44 × 22.44 × 10.24	32.68 × 32.68 × 8.07
	Weight Net • Gross	kg	14.5 • 17.3	16 • 18.6	16.2 • 21.3	21.4 • 25.1
Panel	Dimensions (W × D × H)	mm	647 × 647 × 50	647 × 647 × 50	647 × 647 × 50	950 × 950 × 55
		inch	25.47 × 25.47 × 1.97	25.47 × 25.47 × 1.97	25.47 × 25.47 × 1.97	37.40 × 37.40 × 2.17
Refrigerant Piping Diameter	Liquid side • Gas side	mm	6.35 • 9.53	6.35 • 12.70	6.35 • 12.70	9.53 • 15.88
		inch	1/4 • 3/8	1/4 • 1/2	1/4 • 1/2	3/8 • 5/8

FLOOR / CEILING UNITS

- Built-in drain pump
- Left or right drain connection
- Wide-angle air distribution
- Anti-corrosion finish on fins
- Wireless remote control included



Indoor Unit Model			DIRM-18HP-CF	DIRM-24HP-CF
Cooling	Capacity (maximum)	BTU/h	17 000 (19 900)	24 000 (26 800)
	EER	BTU/W	12.5	11.5
	SEER	BTU/W	20.2	20.2
Heating at 47 °F (8.3 °C)	Capacity (maximum)	BTU/h	18 000 (21 500)	24 600 (30 500)
	COP	W/W	3.19	3.52
	HSPF (region 4)	BTU/W	10.50	11.2
	HSPF (region 5)	BTU/W	8.6	10.0
Heating at 17 °F (-8.3 °C) (AHRI)	Capacity	BTU/h	14 200	14 798
Heating at 5 °F (-15 °C)	Capacity	BTU/h	17 459	16 000
Indoor Air Flow	(Hi • M • Lo)	CFM	548.24 • 485.29 • 420.59	758.82 • 708.24 • 598.24
Indoor Sound Level	(Hi • M • Lo)	dB(A)	45.5 • 43 • 39	51 • 47.5 • 42
Indoor Unit	Dimensions (W × D × H)	mm	1 068 × 675 × 235	1 068 × 675 × 235
		inch	42.05 × 26.57 × 9.25	42.05 × 26.57 × 9.25
	Weight Net • Gross	kg	25.9 • 31	27.5 • 32.7
Refrigerant Piping Diameter	Liquid side • Gas side	mm	6.35 • 12.70	9.53 • 15.88
		inch	1/4 • 1/2	3/8 • 5/8
Thermostat Type	Wireless remote controller		Standard	Standard
	Programmable wired controller		Optional	Optional
	Wi-Fi		Optional	Optional

CONSOLE

- Wide-angle air diffuser
- Remote control included
- Wall thermostat (optional)



Indoor Unit Model			DIRM-12HP-CO
Cooling	Capacity (maximum)	BTU/h	12 000 (13 000)
	EER	BTU/W	13
	SEER	BTU/W	21.5
Heating at 47 °F (8.3 °C)	Capacity (maximum)	BTU/h	12 000 (14 800)
	COP	W/W	3.52
	HSPF (region 4)	BTU/W	10
	HSPF (region 5)	BTU/W	8
Heating at 17 °F (-8.3 °C) (AHRI)	Capacity	BTU/h	10 300
Heating at 5 °F (-15 °C)	Capacity	BTU/h	8 000
Indoor Air Flow	(Hi • M • Lo)	CFM	364.71 • 318.24 • 247.65
Indoor Sound Level	(Hi • M • Lo)	dB(A)	43 • 39 • 33
Indoor Unit	Dimensions (W × D × H)	mm	700 × 600 × 210
		inch	27.56 × 23.62 × 8.27
	Weight Net • Gross	kg	14.8 • 18.6
Refrigerant Piping Diameter	Liquid side • Gas side	mm	6.35 • 12.70
		inch	1/4 • 1/2
Thermostat Type	Wireless remote controller		Standard
	Programmable wired controller		Optional

All indoor units are compatible with single and multi-zone systems



COMFORT AT ITS BEST

MULTI-ZONE INSTALLATION

WORKS DOWN TO -25 °C

SOME MODELS AND COMBINATIONS ARE ENERGY STAR AND/OR NEEP APPROVED



DIRM-48DA25-5Z illustrated

Outdoor Unit Model			DIRM-18DA25-2Z	DIRM-27DA25-3Z	DIRM-36DA25-4Z	DIRM-48DA25-5Z
Capacity			18k	28k	36k	48k
Zones	#		2	3	4	5
Voltage	V, Ph, Hz		208/230, 1, 60	208/230, 1, 60	208/230, 1, 60	208/230, 1, 60
Max. Breaker	A		25	30	40	60
Outdoor Sound Level	dB(A)		58.5	61	63	64
Fan Motor	qty		1	1	1	2
Cooling	Capacity (maximum)	BTU/h	18 000 (22 000)	28 000 (30 438)	36 000 (40 555)	48 000 (50 000)
	SEER	BTU/W	Up to 25.5 - Depending on the indoor unit			
Heating at 47 °F (8.3 °C)	Capacity (maximum)	BTU/h	19 000 (24 400)	28 000 (31 000)	37 000 (44 632)	48 000 (52 000)
	COP	W/W	3.92	3.73	3.61	3.6
	HSPF (region 4)	BTU/W	10.6	10.5	11.3	11.0
	HSPF (region 5)	BTU/W	8.5	8.8	9.2	8.8
Heating at 5 °F (-15 °C)	Rated Capacity	BTU/h	12 400	15 500	23 959	27 000
	COP	W/W	1.75	1.75	1.75	1.65
Dimensions	W x D x H	mm	890 x 342 x 673	946 x 410 x 810	946 x 410 x 810	952 x 415 x 1 333
		inch	35.04 x 13.46 x 26.50	37.24 x 16.14 x 31.89	37.24 x 16.14 x 31.89	37.48 x 16.34 x 52.48
Weight	Net • Gross	kg	45.5 • 49.3	63.4 • 68.3	76.7 • 82.3	102.3 • 116.4
		lb	100.31 • 108.69	139.77 • 150.57	169.09 • 181.44	225.53 • 256.62
Refrigerant Piping	Max. Total Length (entire unit)	m	40	60	80	80
		ft	131	197	262	262
	Max. Length (one indoor unit)	m	25	30	35	35
		ft	82	98	115	115
Diameter	inch	2 x 1/4-3/8	3 x 1/4-3/8	3x 1/4-3/8 1x 1/4-1/2	3 x 1/4-3/8 2x 1/4-1/2	
Operating Temperatures (range)	Cooling	°C	-25 ~ 50	-25 ~ 50	-25 ~ 50	-25 ~ 50
		°F	-13 ~ 122	-13 ~ 122	-13 ~ 122	-13 ~ 122
	Heating	°C	-25 ~ 30	-25 ~ 30	-25 ~ 30	-25 ~ 30
		°F	-13 ~ 86	-13 ~ 86	-13 ~ 86	-13 ~ 86

COMBINATION RULES

Outdoor Unit Model	2 UNITS	3 UNITS	4 UNITS	5 UNITS
DIRM-18DA25-2Z	6 + 6 12 + 12	-	-	-
DIRM-27DA25-3Z	6 + 6 to 18 + 18	6 + 6 + 6 to 12 + 12 + 12	-	-
DIRM-36DA25-4Z	6 + 6 to 18 + 18	6 + 6 + 6 to 12 + 12 + 24	6 + 6 + 6 + 6 to 12 + 12 + 12 + 12	-
DIRM-48DA25-5Z	6 + 6 to 24 + 36	6 + 6 + 6 to 12 + 12 + 36	6 + 6 + 6 + 6 to 12 + 12 + 18 + 18	6 + 6 + 6 + 6 + 6 to 12 + 12 + 12 + 12 + 12

Many other combinations possible. See your HVAC professional to determine which combination best suits your needs.

If the total load of the indoor units exceeds the rated capacity of the outdoor unit, the practical output capacity of each indoor unit will be attenuated. This situation is very obvious in heating mode.

Rule: Outdoor unit capacity × 0.66 ≤ Total indoor unit capacity ≤ Outdoor unit × capacity 1.33

MULTI-ZONE INSTALLATION INDOOR UNITS

The Direct Air heat pump selection with Inverter technology now offers more installation possibilities to meet the specific needs of condos or commercial premises. In addition to the popular wall-mounted unit, Direct Air also offers 4 other types of Inverter units with elegant and discreet designs that will meet your heating and cooling needs: duct unit, wall console, 4-way cassette unit, and ceiling/floor console.

OUTDOOR UNIT



INDOOR UNITS



Multi-zone unit



High wall unit



Console



Floor / ceiling unit



4-way cassette unit



Duct unit

Floor / ceiling unit

Console

4-way cassette unit

Duct unit

High Wall unit

Multi-zone outdoor unit

***All indoor units are compatible with multi-zone installation.**

DIRM-48DA25-5Z illustrated



WARRANTY*

Direct Air heat pumps include:



* Residential installation only. Commercial installation: 5-year warranty on compressor and 1-year warranty on parts.

OUR BRANCHES

Montreal

9500 Ray-Lawson Blvd.
Anjou, QC H1J 1L1
Phone: 514-493-6400
Fax: 514-493-8722
montreal@powrmatic.ca

Ottawa

1412 Star Top Road
Gloucester, ON K1B 4V7
Phone: 613-230-7160
Fax: 613-230-0685
ottawa@powrmatic.ca

London

1064 Hargrieve Road
London, ON N6E 1P5
Phone: 519-675-1491
Fax: 519-675-4725
london@powrmatic.ca

Quebec

385 Fortin Street
Quebec, QC G1M 1B2
Phone: 418-683-2708
Fax: 418-683-8860
quebec@powrmatic.ca

Toronto

157 Rivermede Road
Concord, ON L4K 2R2
Phone: 905-660-0033
Fax: 905-660-8881
toronto@powrmatic.ca

Halifax

50 Troop Avenue, Unit 100
Dartmouth, NS B3B 1Z1
Phone: 902-454-8684
Fax: 902-453-5875
halifax@powrmatic.ca



Retailer:



POWRMATIC

www.powrmatic.ca

