

Amantii



CUBE REPAIR GUIDE

CUBE-2025WM

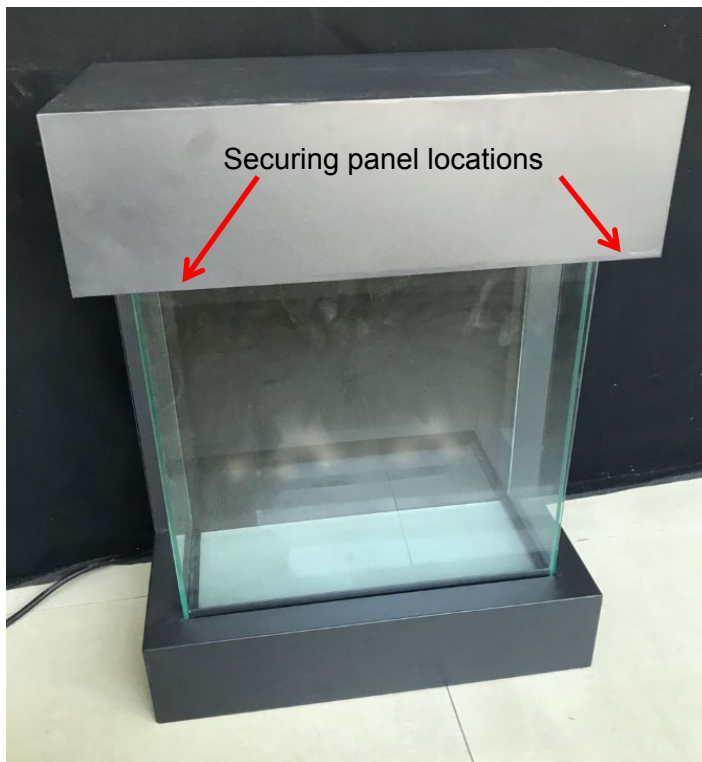
TABLE OF CONTENTS

- [How to replace the LED light](#)
- [How to replace the flicker motor](#)
- [How to replace the heating element](#)
- [How to replace the PCB board](#)
- [How to replace the signal receiver](#)
- [How to replace the Canopy light](#)

HOW TO REPLACE THE LED LIGHT

CUBE-2025WM

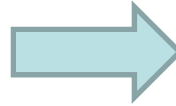
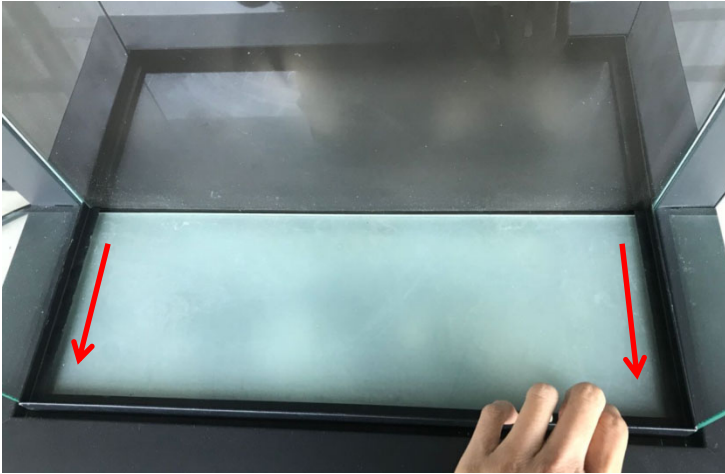
STEP 1 Unscrew the front glass securing steel panel and remove the front glass panel.



Unscrew

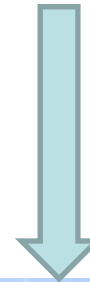


STEP 2



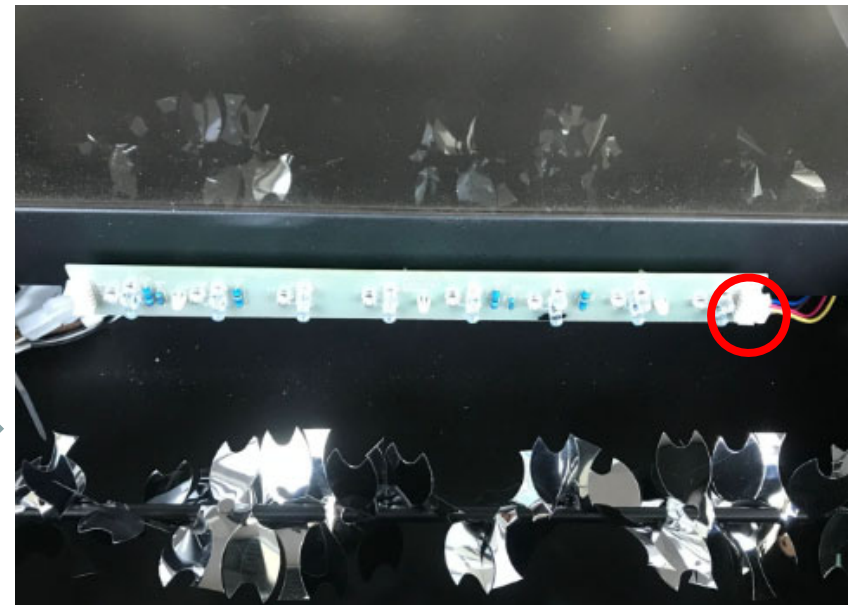
Grasp the steel bar and pull it out
Towards you (horizontally as shown).

Then pull it upward to take
it off.



STEP 3

You can now replace ember bed LED light



Remove the ember bed glass panel, you will find the ember bed LED light beneath the glass panel.

Unplug the red circled socket and replace the LED light.

Change flame light, see step 4

STEP 4

Replace the flame LED light.



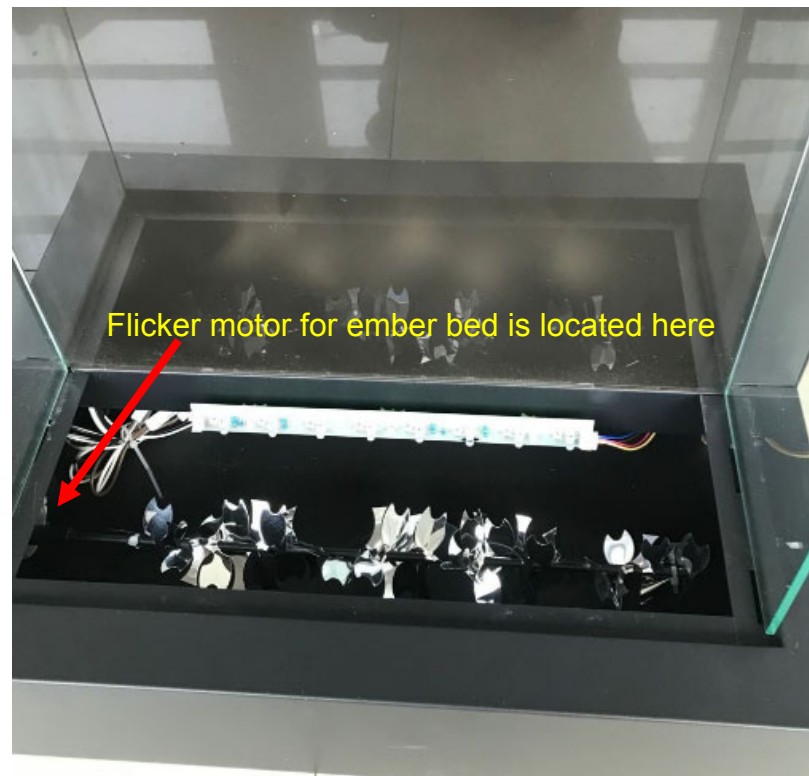
Unscrew the screws circled above to remove the back cover.



STEP 5 When the back cover is removed, you can replace the LED light circled in red for the flame.

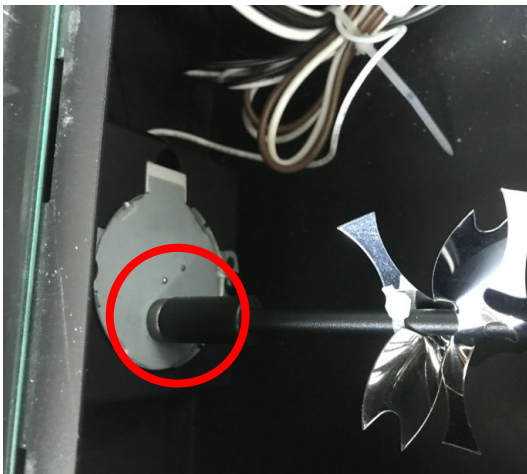
REPLACE THE EMBER BED FLICKER MOTOR

After you have completed **STEP 1** through **STEP 3**, you will be here:

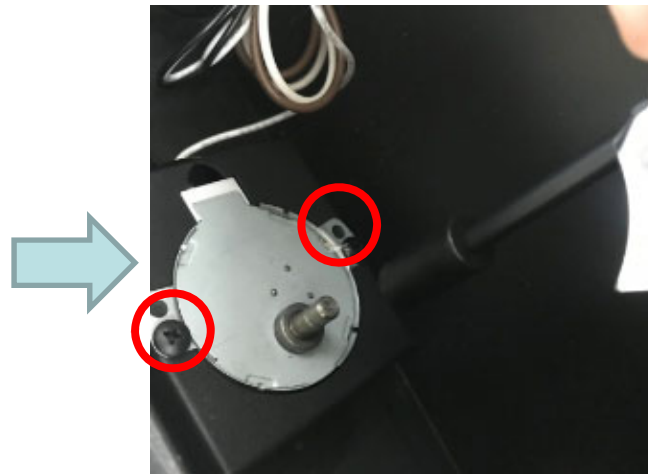


REPLACE THE EMBER BED FLICKER MOTOR

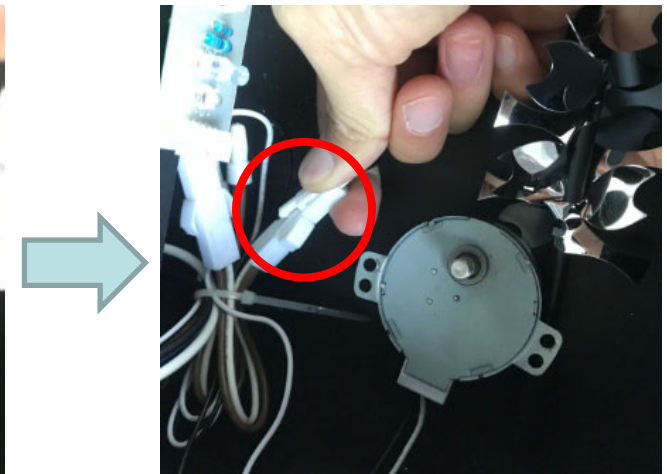
STEP 1



Disconnect the flicker rod connected to the ember bed flicker motor.



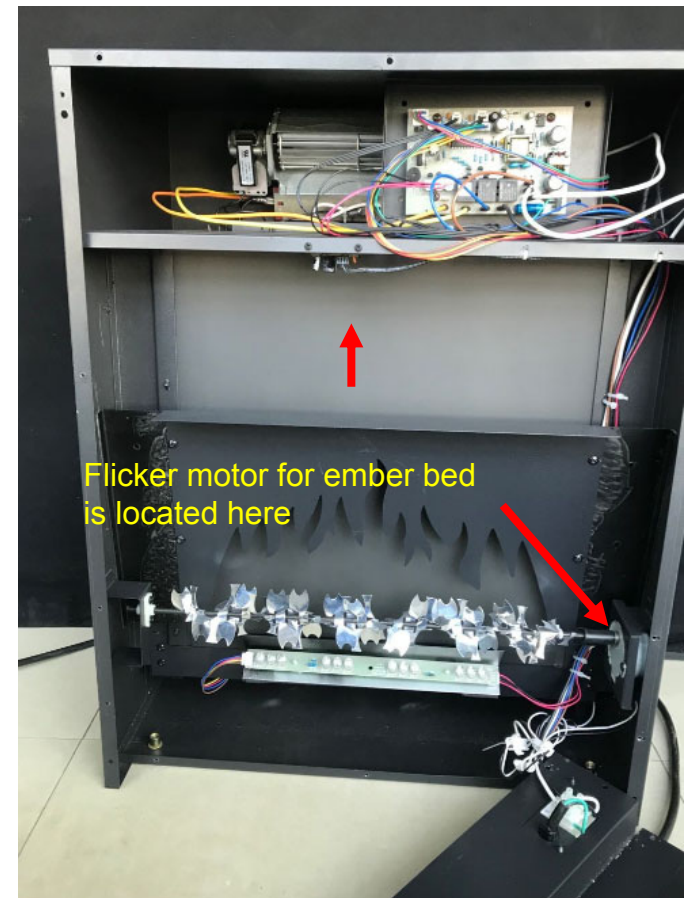
Unscrew and remove the ember bed flicker motor.



Unplug the ember bed flicker motor and replace with a new ember bed flicker motor.

REPLACE THE FLAME FLICKER MOTOR

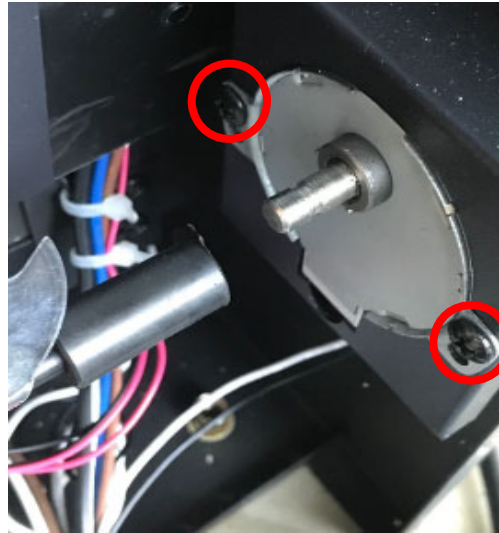
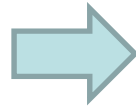
Unscrew the screws circled in red and remove the back cover.



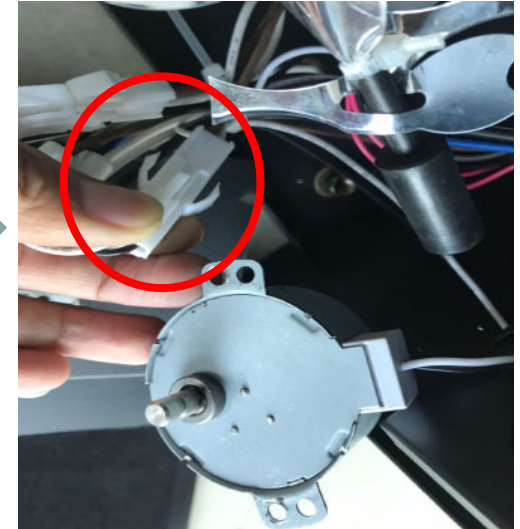
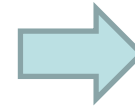
STEP 1



Disconnect the flicker rod with the motor.



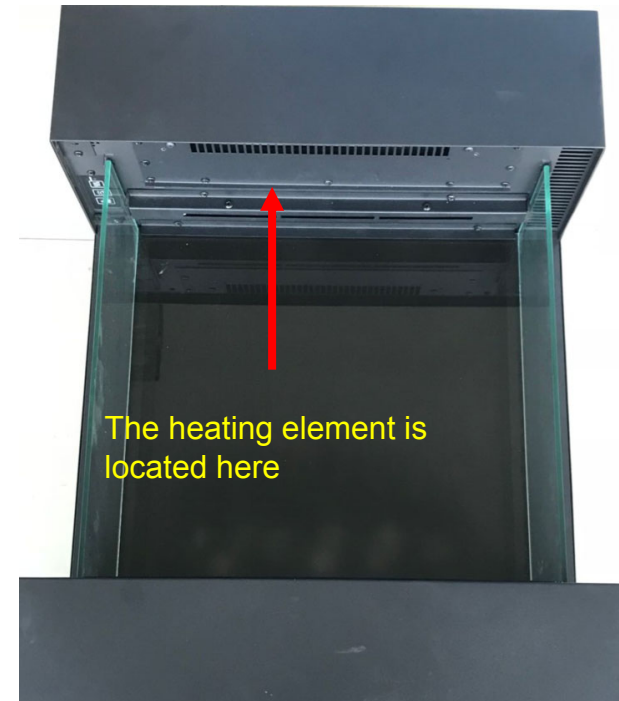
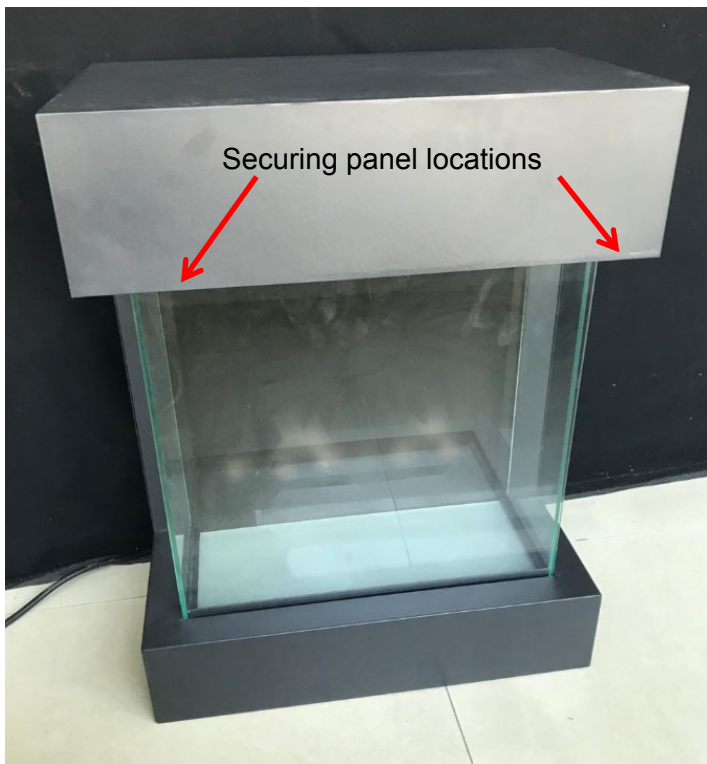
Unscrew the screws
Circled in red and
remove the motor.



Unplug and replace a
new motor for ember
Bed.

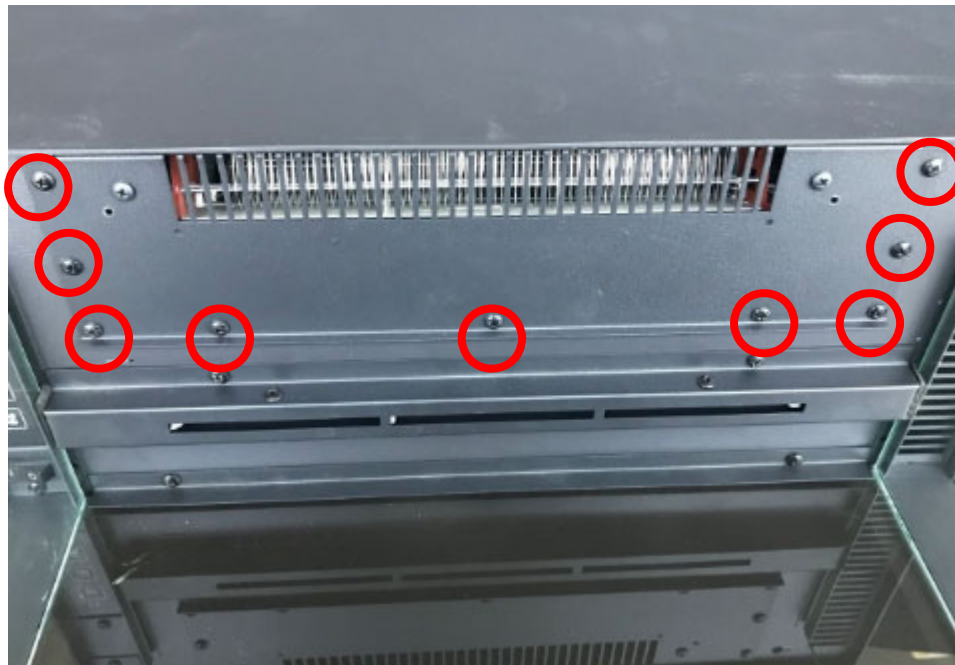
REPLACE THE HEATING ELEMENT

STEP 1 Unscrew the front glass securing steel panel and remove the front glass panel.



STEP 2

Unscrew the circled screws and remove the heating element.

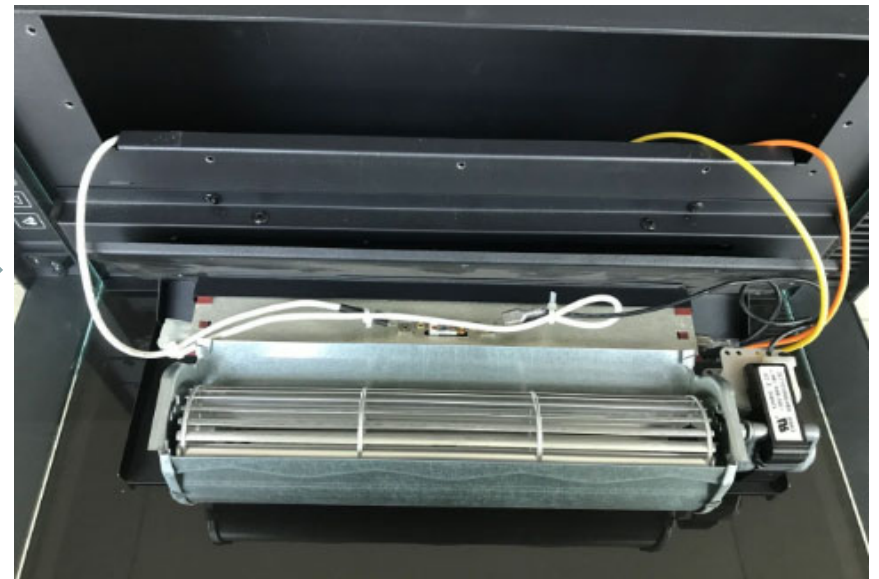
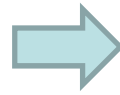


STEP 3

Pull the heating element out and turn it over, then you can replace it with a new one.



Pull it out

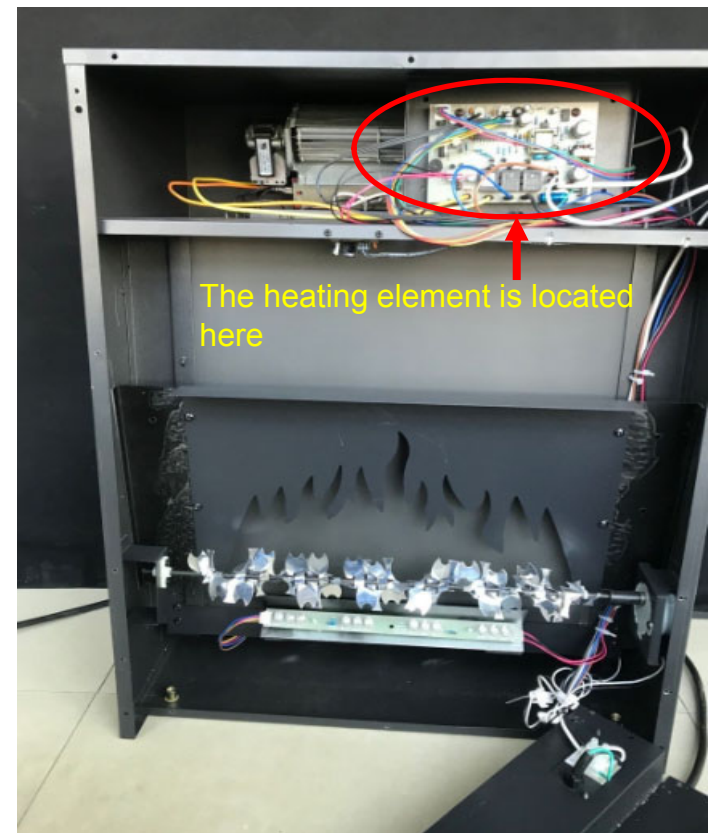


Turn it over

REPLACE THE PCB BOARD

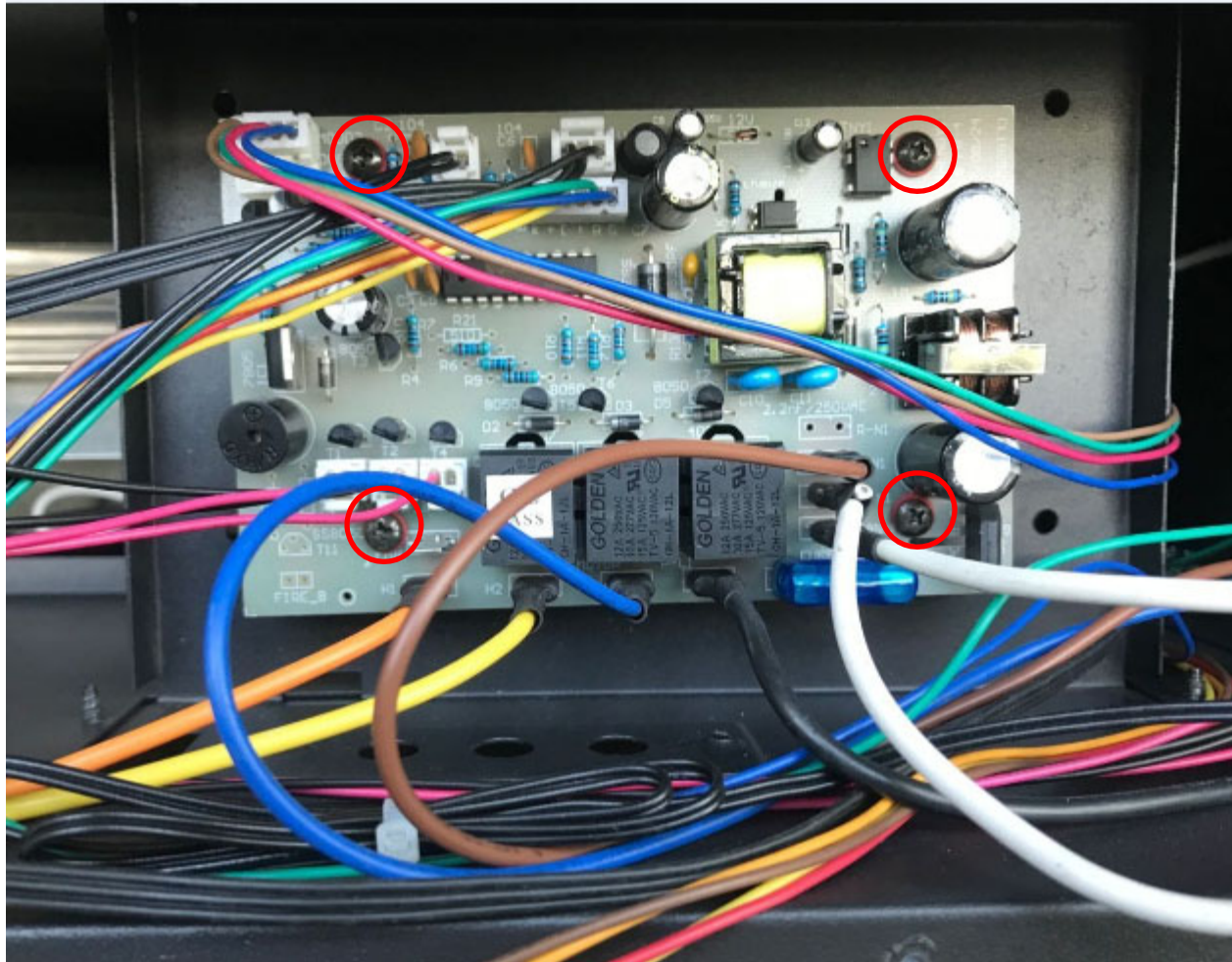
STEP 1

Unscrew the circled screws and remove the back cover



STEP 2

Unscrew the 4 screws circled in red and replace the PCB with a new one.



REPLACE THE SIGNAL RECIEVER

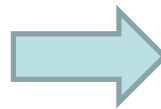
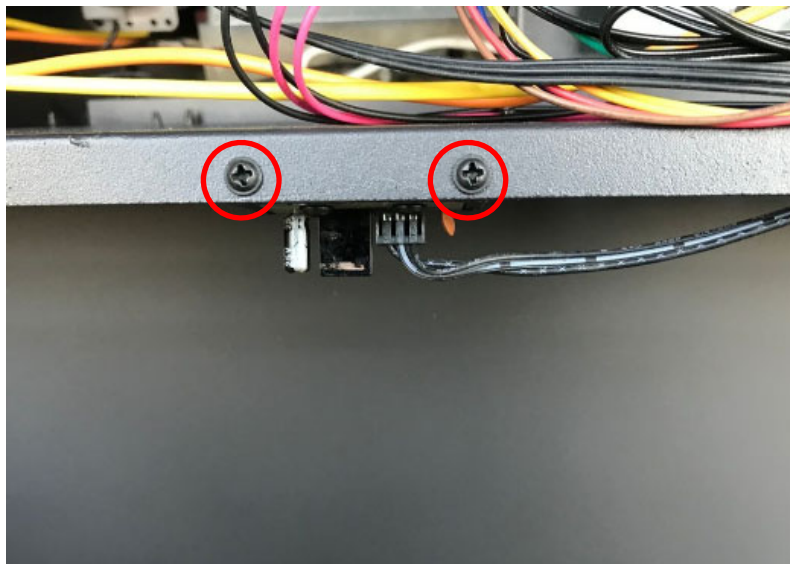
STEP 1

Unscrew the screws circled in red and remove the back cover.



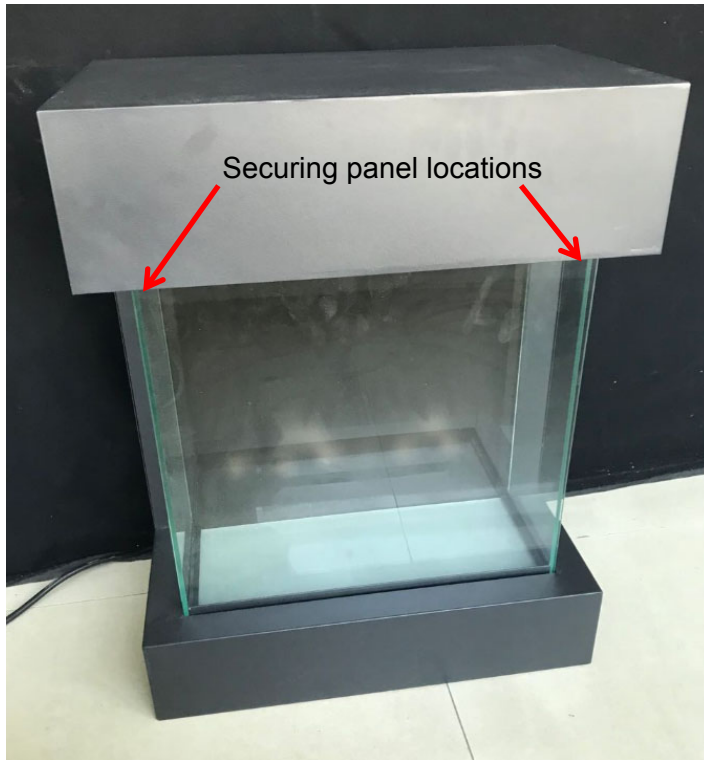
STEP 2

Unscrew 2 screws circled in red to remove the signal receiver and replace it with a new one.



REPLACE THE CANOPY LIGHT

STEP 1



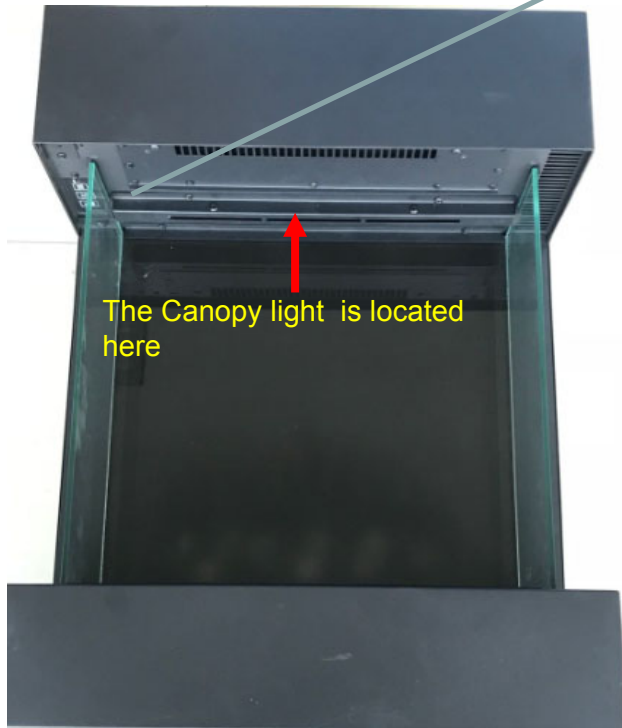
Unscrew the front glass securing steel panel and remove the front glass panel.



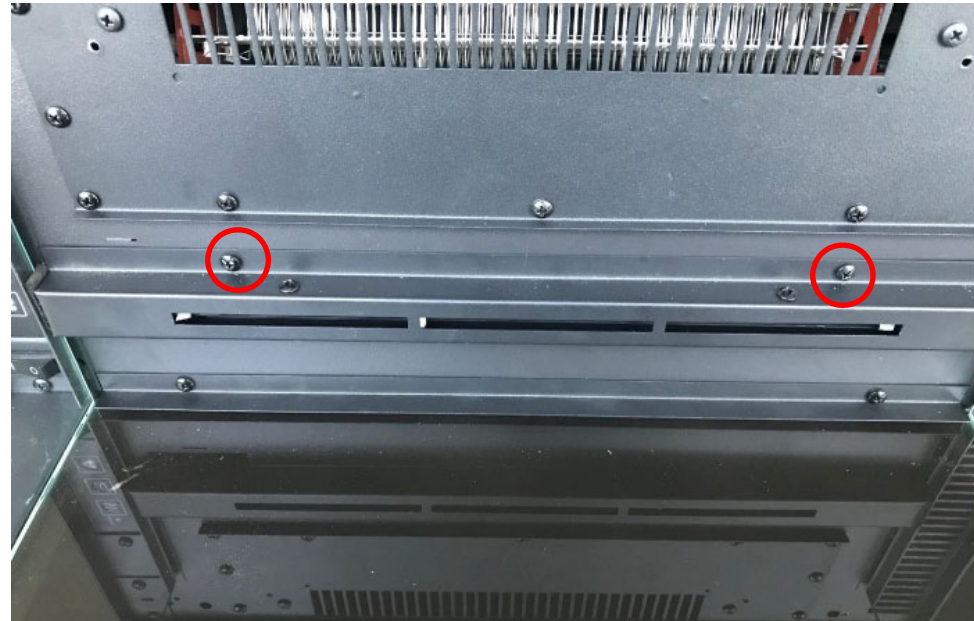
Unscrew



STEP 2



ZOOMED IN VIEW



Unscrew 2 screws circled in red and remove the Canopy light set.

STEP 3

Unplug the Canopy light circled in red and replace it with a new Canopy light.

