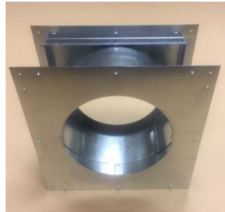


864TV 40K (GSR2) (STD & CF) Cheat Sheet

The new 864TV 40K fireplace has several new characteristics that require special attention during installation. **Refer to the manual for full details.**

- Unlike its predecessors, the 864TV 40K is a **TOP VENT ONLY**.
- Horizontal terminations with NG gas require a 1' minimum rise of the unit. LP gas requires 2' minimum.
- Logs must be ordered separately. The standard logs are available, and we are releasing a Birch log set soon.
- Due to the fireplace being Top Vent only, the minimum enclosure height has increased to 62-3/4"
- All horizontal terminations require 8" Venting.
- This fireplace is compatible with the CoolSmart TV system. This kit allows for a TV pocket to be installed or an installation of a TV above the fireplace without a mantel.

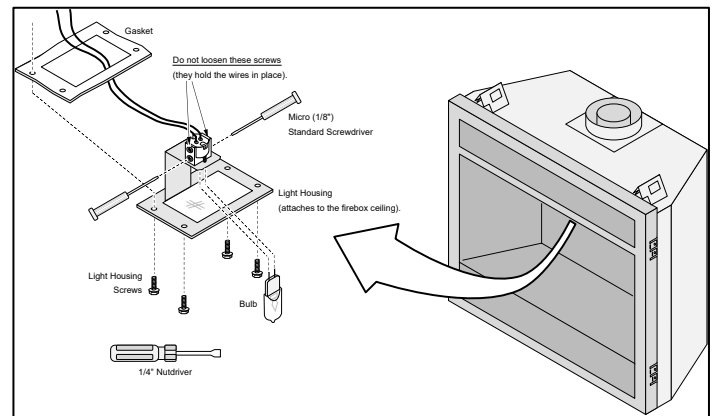
- A wall thimble is included with the fireplace. It provides the required 1" clearance to combustibles and is required when penetrating a combustible wall.



- Ember Bed Lights are now standard in the fireplace.



- There is a new, easy to access, top accent light.



- A horizontal termination heat shield is required to be used if the structure has vinyl siding. The heat shield is recommended for all horizontal terminations, regardless of what siding is used. The shield screws to the DuraVent High Wind termination as shown to the right. The shield and screws are included with the fireplace.

